

5.4 Bowden Yard Releases

The Bowden Yard is located on the south side of Jacksonville, Florida, and represents the northern terminus of the FECR mainline track considered in this QRA. The Bowden Yard contains two release scenario classifications: (1) ISO container lifting, and (2) yard movement. An aerial image of the Bowden Yard, depicting the location/routes for the two release scenarios, is provided in Figure 35. The lifting operations have been modeled as a fixed location release while the yard movement scenario follows a path which terminates at the approximate FECR property boundaries. PHAST Risk modeled the release sources for the route at 75-foot intervals along the path.

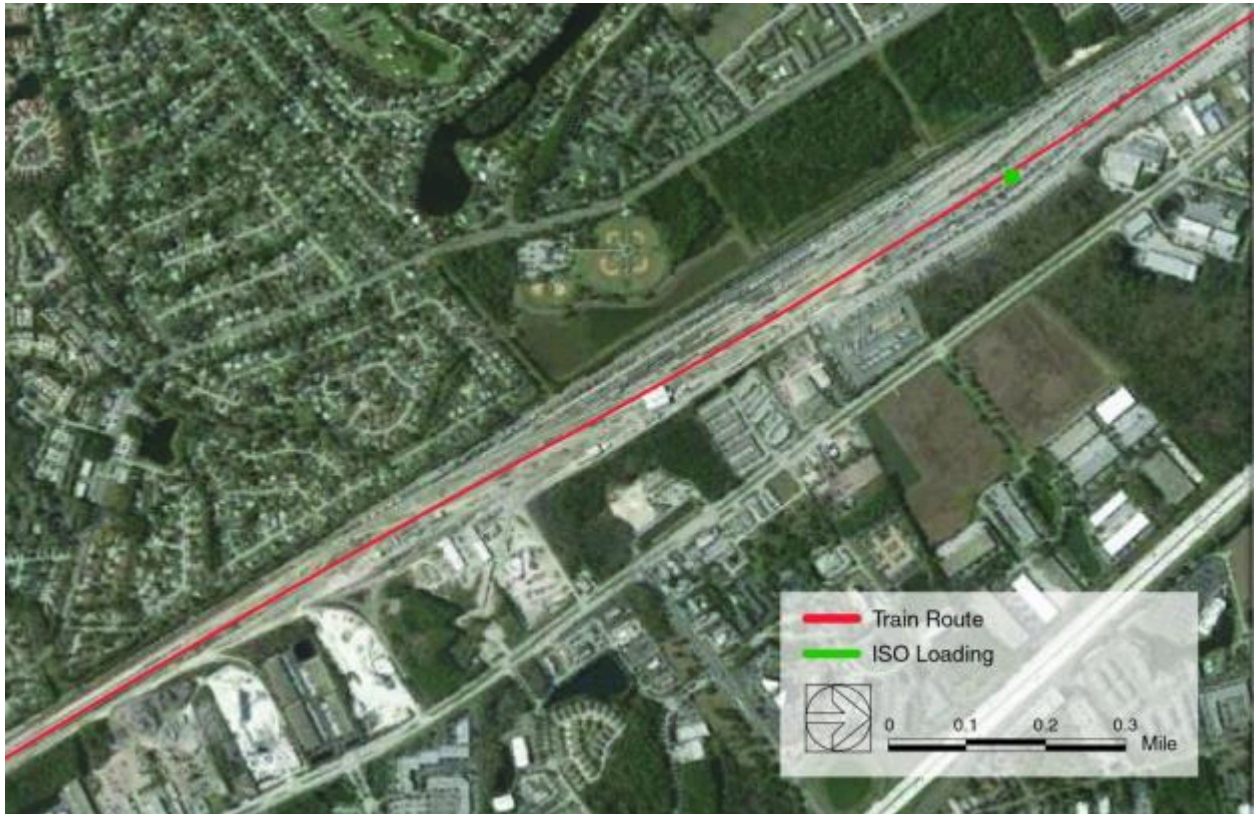


Figure 35. Aerial view of the Bowden Yard. The yard rail line is red and the approximate location of the lifting operations is represented as a green dot.