

6.6 Port of Miami Lead Track Populations

The route between Hialeah Yard and Port of Miami was divided into three sections as shown in Figure 41. The population densities for Census Blocks 1 and 2 correspond to the population densities for mile markers 304-314 in Figure 40. For the Port of Miami lead track (census block 3), the census data for all census blocks within 1.6 miles (2500 m) of either side of the rail line were consolidated to calculate the population density for that portion of the track. The population densities for these Census Blocks are provided in Table 39. Therefore, the risk of transport along the Port of Miami lead track is bounded by the mainline track risk analysis with an average population density of 11,800 people/mile² at Mile Marker 308.

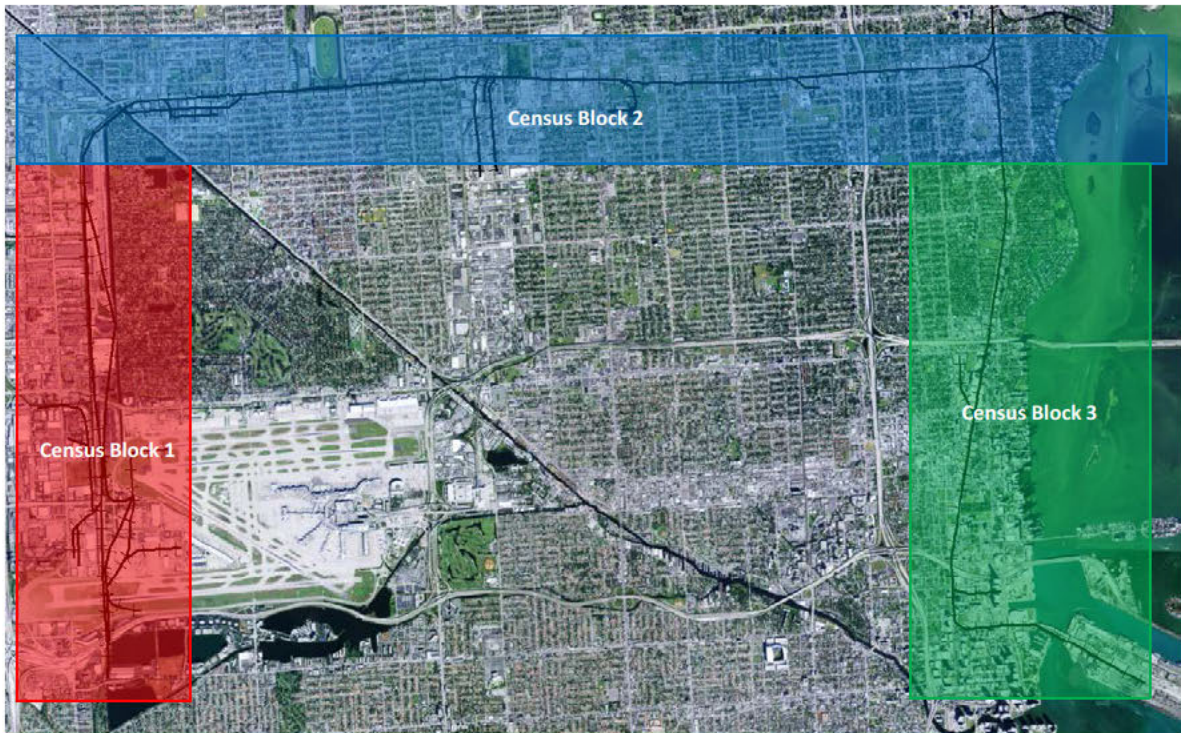


Figure 41. Aerial image of the route between Hialeah Yard and the Port of Miami.

Table 39. Population densities of the consolidated census blocks for Route 1.

Census Block	Population Description	Population Density (People per square mile)
1	Residential / Commercial	10,879
2	Residential / Commercial	11,069
3	Residential / Commercial	10,252