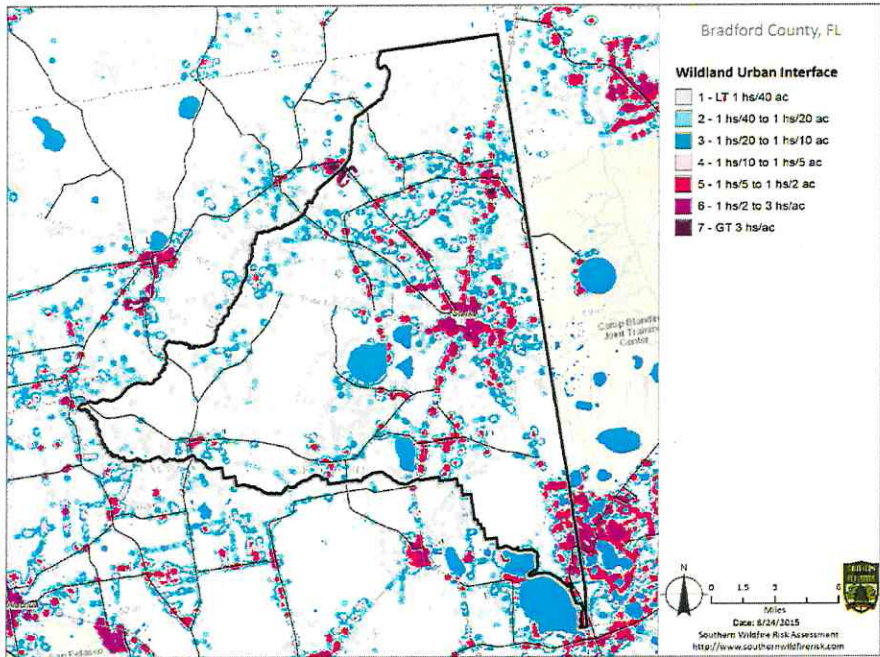


The Summary Report contains information products and other support tools which homeowners, land owners, elected officials, local fire agencies and state/federal fire management agencies utilize in their determinations concerning key priorities for planning and wildland fire management issues such as firefighter safety, wildfire response and reduction of firefighting costs. **Further explanation of SouthWrap and a copy of the entire Summary Report for Bradford County can be seen in Attachment A.**

### The SouthWRAP View of the Bradford County WUI

The WUI mapping layer reflects housing density depicting where people and their structures meet or inter-mix with wildland fuels.



Source: SouthWRAP. The housing-density categories 4-7 combined, represent a high density of the population whose homes either meet or intermix with wildland fuels. These gradations of housing distribution provide data required for fire protection planning and, as illustrated in the table below, quantifying WUI Risks.

### Bradford County WUI Population and Acres