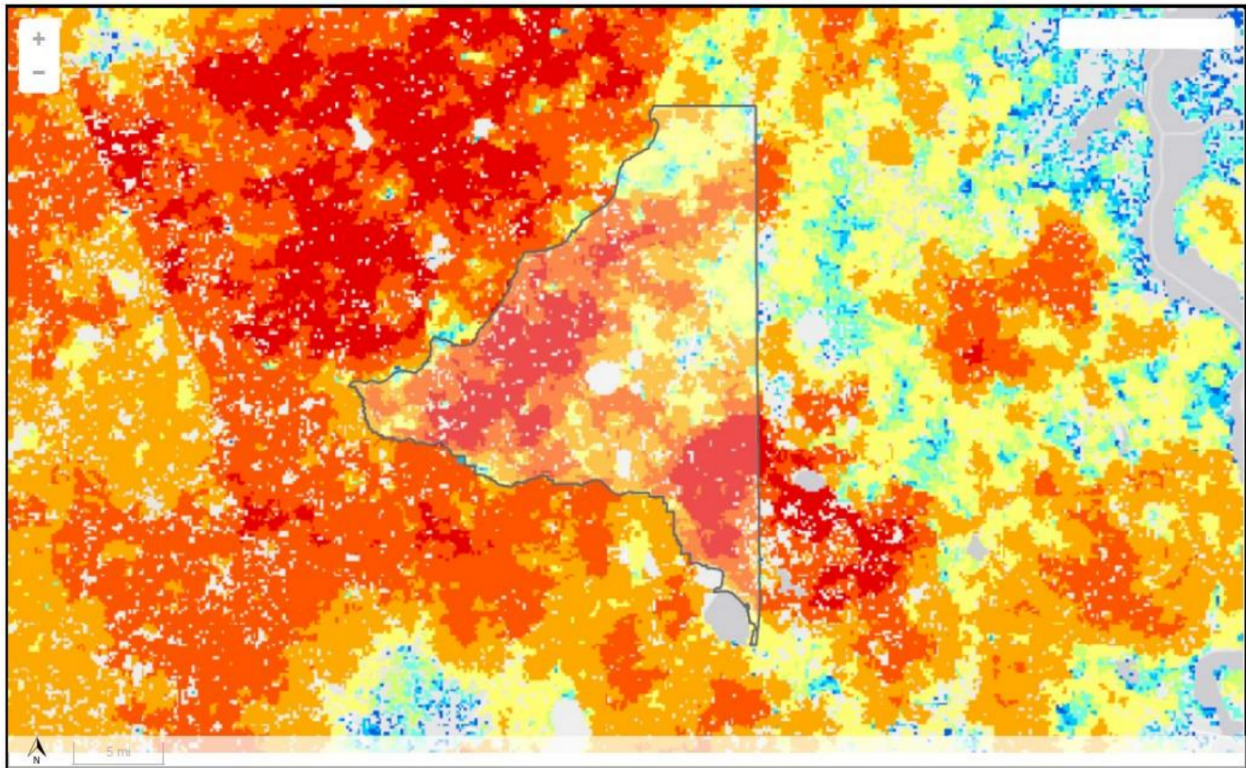


Bradford County is subject to wildland and forest like fires. Woodland is a major natural resource in Bradford County and forestry and forest products are an important part of the local economy. And although Bradford County Fire Department responds to many wild land (brush) fire calls annually, property losses are kept to a minimum in the rural areas.

Bradford County, Florida “Burn Probability”



Source: Southern Wildfire Risk Assessment

Probability - The probability of a wildfire is low-medium (one occurrence every 3-10 years) for the entire county.

Location – The entire county is susceptible to wildfire. However, the unincorporated areas of the county are particularly vulnerable due to being heavily wooded with dense vegetation.

Extent – Wildfires can cause millions of dollars in damage and loss of life. The extent of a wildfire could be measure by size (acres burned) or damage (financial loss). The worst-case scenario for a wildfire would be interaction with a heavily populated area, such as in the 1998 Wildfire reference above where it is estimated that there was \$200 Million in damages.