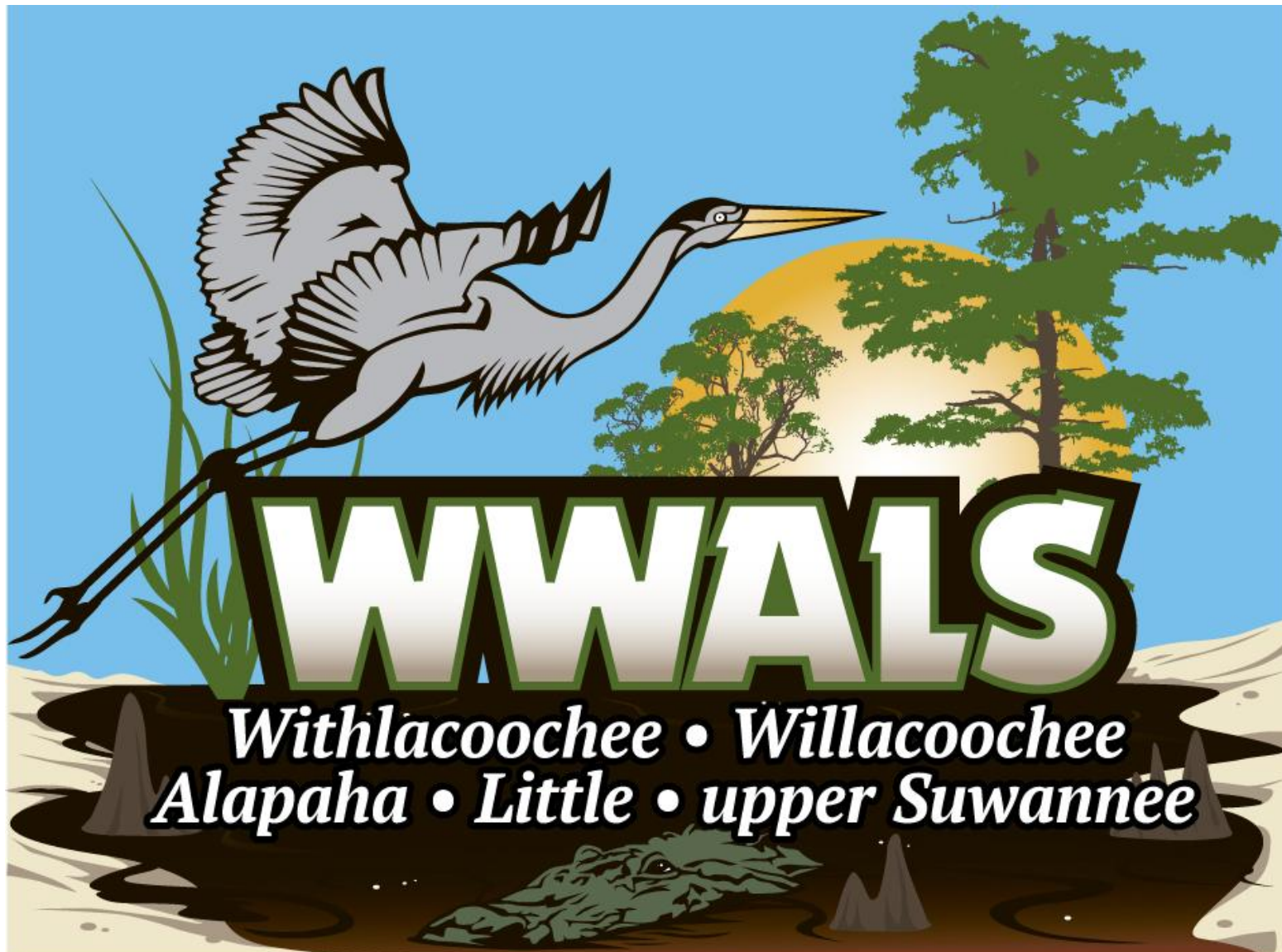


Suwannee RIVERKEEPER®  
WWALS Watershed Coalition, Inc.



# Coal Ash in Landfills in Suwannee River Basin

- Previous coal ash landfill sources:
  - FL coal ash: at least in
    - Lowndes County (Withlacoochee River)
    - Charlton County (St Marys River)
    - 3 other south Georgia counties
  - TN TVA coal ash: Lowndes County and others
- The special problem: the Lowndes County landfill
  - Both TVA and JEA coal ash
  - PCBs & Waycross Superfund wastewater
  - Privatized: who to call?
- More coal ash sources, including GA, SC
- Bills in Georgia legislature now and who to call

# Previous sources: Florida coal ash

- Heather Duncan, Macon Telegraph, 15 May 2009, [Coal ash waste headed to midstate](#), “[Jeff] Cown [Cown, solid waste program manager for the Georgia Environmental Protection Division] said. He knows of at least four others in south Georgia, including the Veolia landfill in Lowndes County, that take coal ash from Florida power plants.”
- Chesser Island Road Landfill, Inc. MSWL (Charlton County) according to St Marys Riverkeeper

# Previous sources: TN TVA coal ash

- Pam Sohn, Chattanooga Times Free Press, 10 May 2009, [TVA sending ash to 2 sites](#)
  - “[TVA spokesman Gil] Francis said the locations of the landfills aren’t being disclosed because the test will help the utility choose the contractors for disposal work.”
  - Derrick Williams, solid waste, GA-EPD: “a landfill in Taylor County near Mauk, Ga., in the middle western portion of the state will receive some ash loads.”
  - Also a municipal waste landfill in Perry County in west central Alabama --Philip Davis, Chief of Solid Waste, Alabama Department of Environmental Management

# Previous sources: TVA cont.

- Came from unlined TN Class II or industrial waste landfill
  - behind TVA's Kingston Steam plant near Harriman.
  - Earthen berm in broke just before Christmas 2008.
- Spilled ash to go to Class I municipal garbage landfills.
  - GA, AL solid waste officials: their landfills are double-lined with clay + synthetic barrier material.

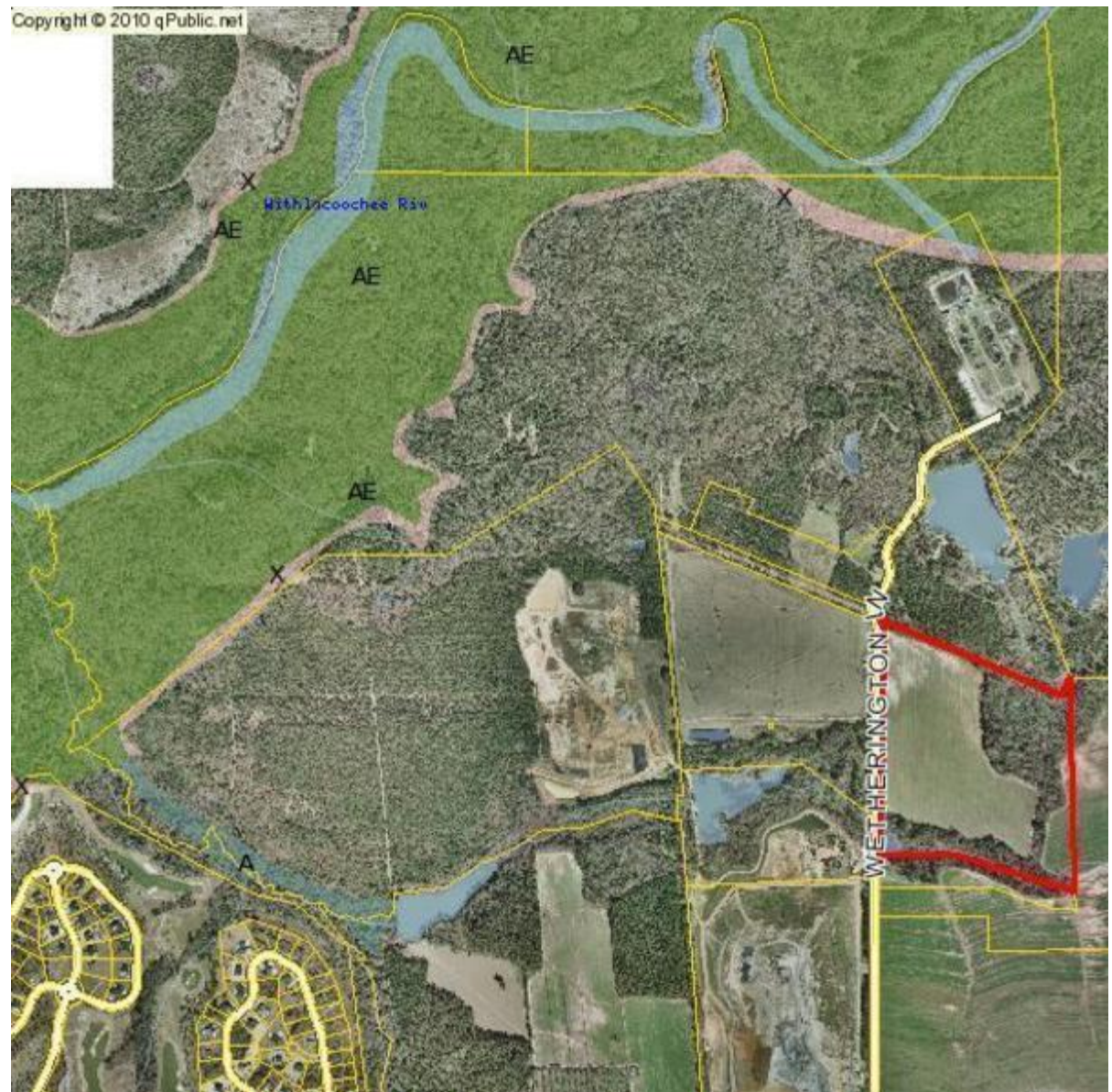
Why should we who did not create the problem have to absorb this hazardous material?

# The special problem: Lowndes County landfill

- EPA: TVA coal ash shipped to Lowndes County landfill  
[Cheryl A. Lane, Community Involvement Coordinator, EPA,](#)  
[in Waycross 14 November 2014](#)
  - Remember also Florida coal ash to Lowndes County
  - No special permission required to accept coal ash
  - Did get variance to spread coal ash on landfill roads
- Jan 2013: [\\$27,500 GA-EPD fine for PCBs](#)
- In 2005: [44 shipments](#), 196,500 gallons, of wastewater from the [“7 Out Site”](#) in Waycross to “Pecan Row, Valdosta, GA” for \$59,495.00 total of your federal tax dollars to Veolia

# 1/4 mile uphill from Withlacoochee River **Lowndes County landfill**

Between river  
on left  
and red marking  
new Valdosta  
Withlacoochee  
Wastewater  
Treatment  
Plant (WWTP)

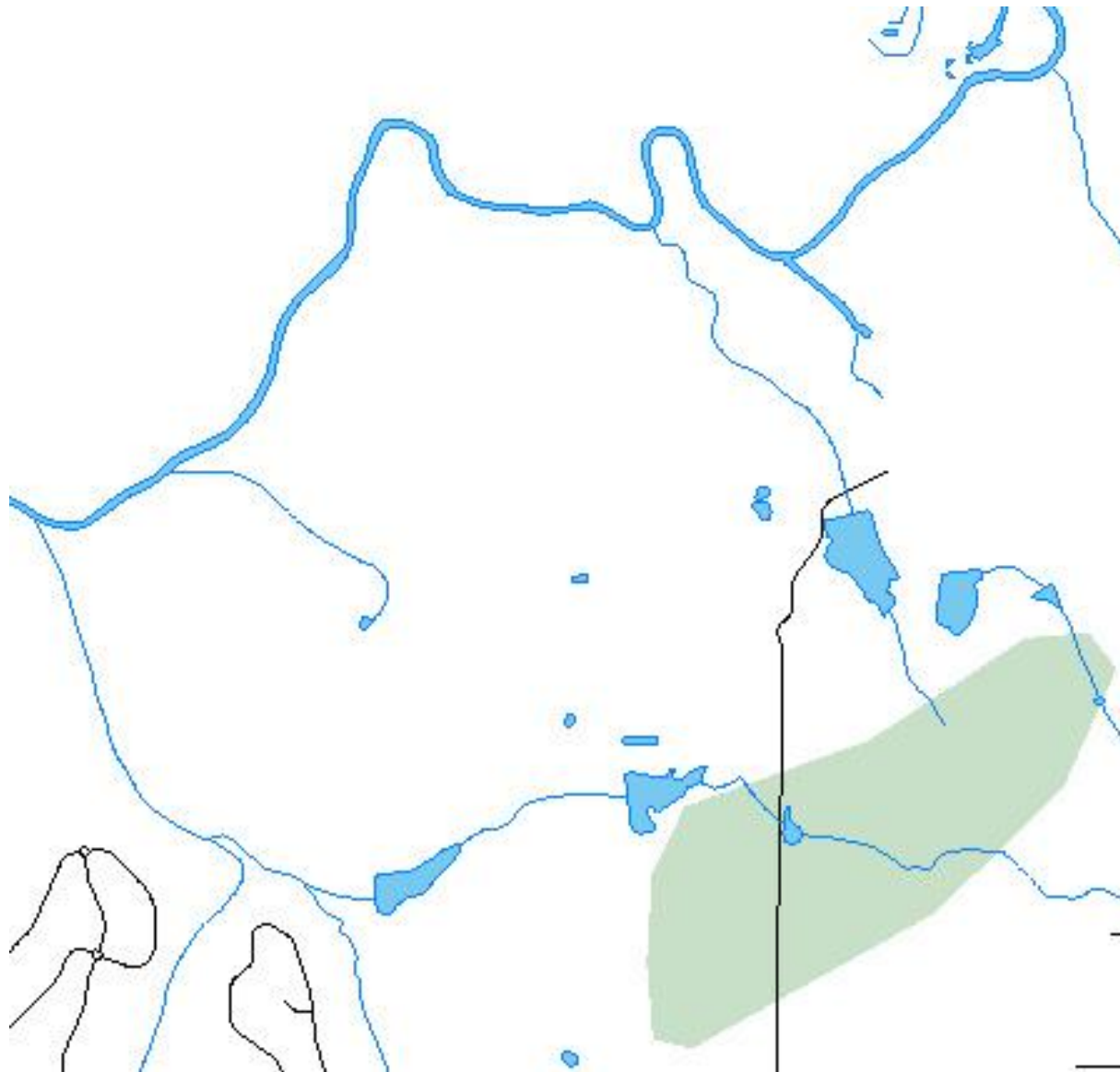


1/4 mile uphill from Withlacoochee River  
**Lowndes County landfill**



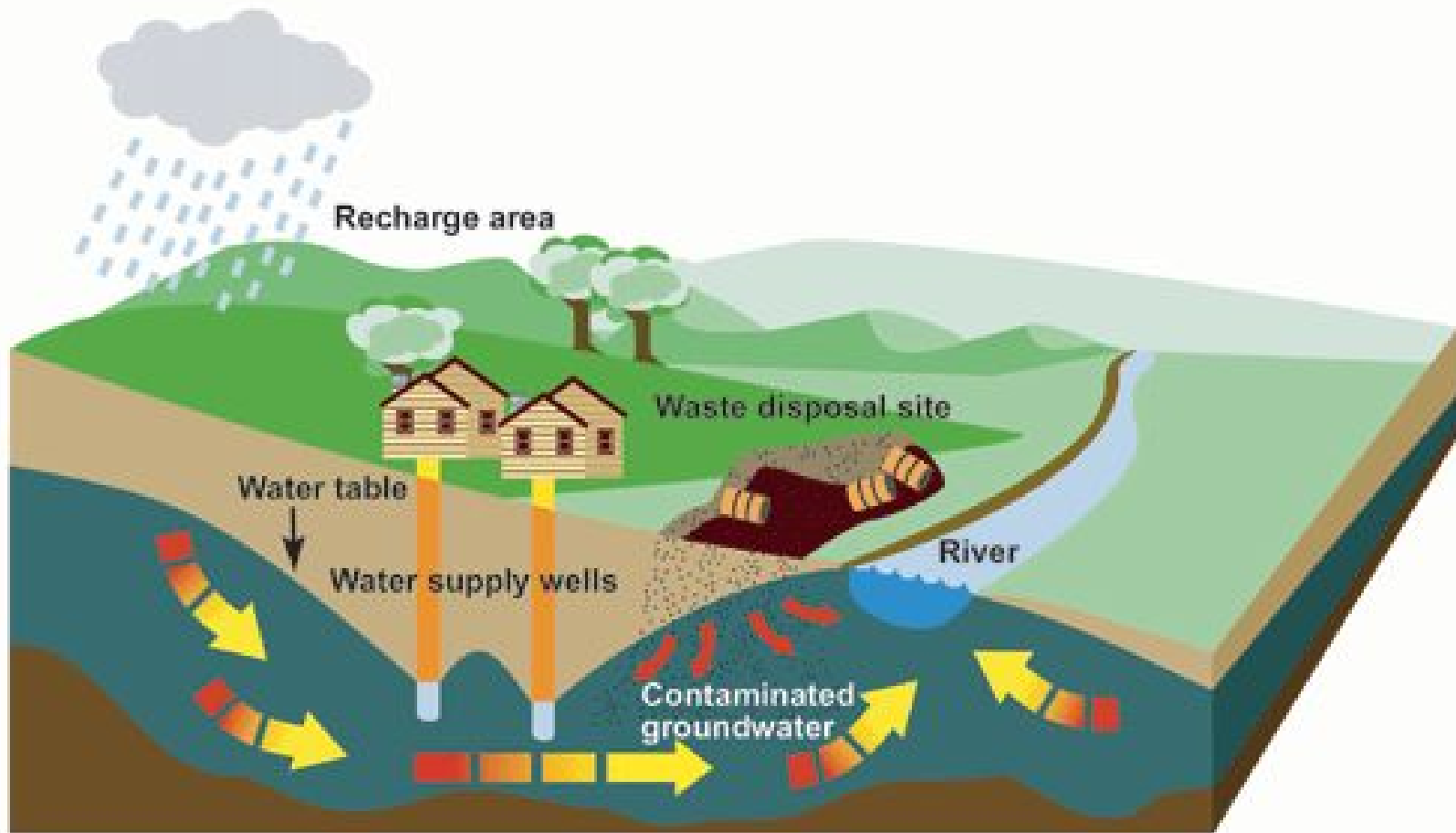


In aquifer recharge zone  
**Lowndes County landfill**

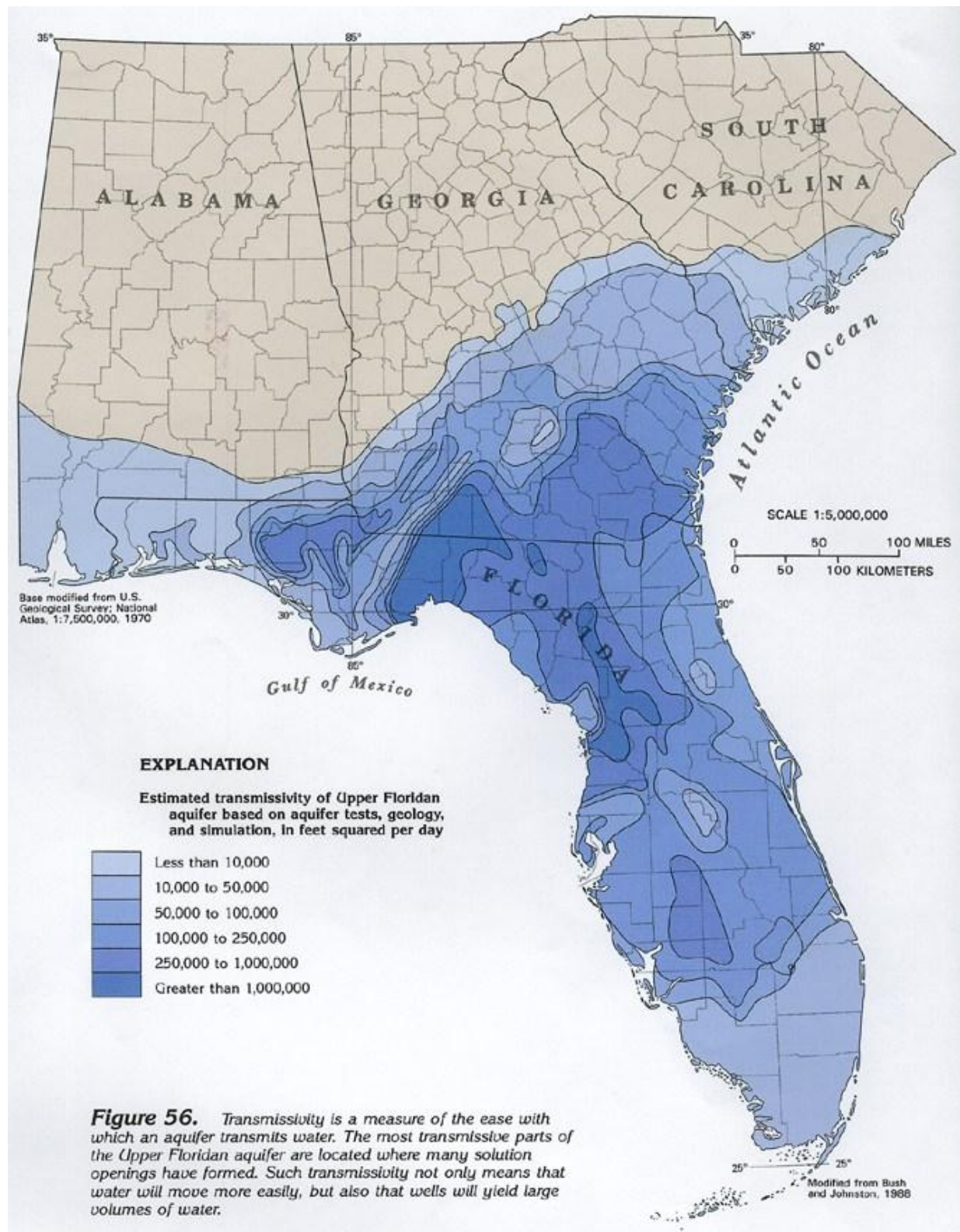


# Groundwater contamination Lowndes County landfill

Groundwater contamination from a waste disposal site



# Floridan Aquifer



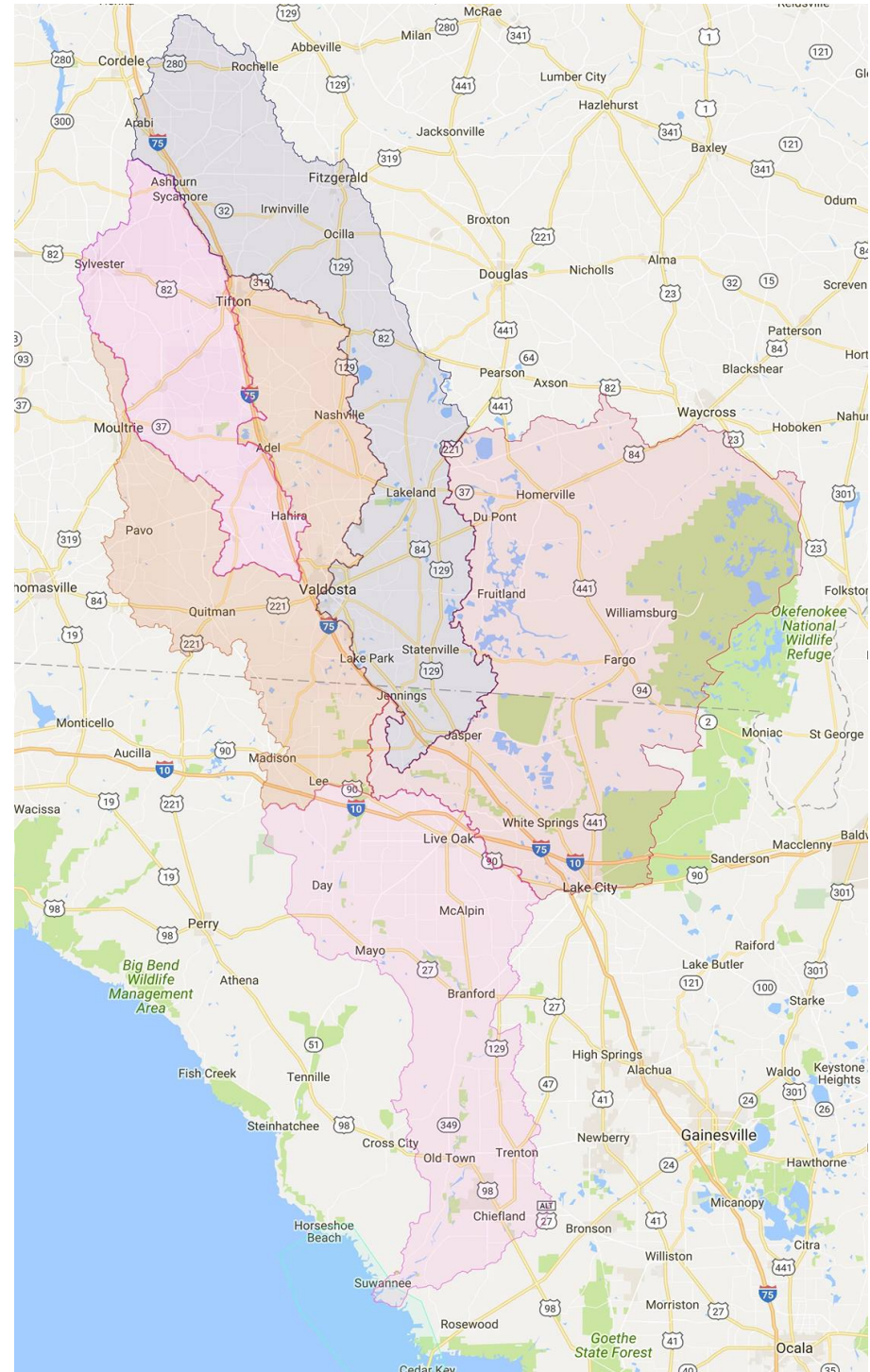
# Privatized: Lowndes County landfill

- About 15 years ago landfill was privatized
  - to Onyx
    - bought by Veolia
      - bought by ADS
        - owned by New York City investors
- [Lowndes County staff won't reveal:](#)
  - contract for tipping fees
  - dollar value of tipping fees
  - “host fees”
- Landfill overseen by Deep South Solid Waste Authority (SWA)
  - [Lowndes County staff won't reveal](#) SWA charter, bylaws, board members, agendas, or minutes
  - County and city of Valdosta appoint SWA board members
  - No appointees have answered questions about coal ash

# WWALS Territory

From Cordele in the North,  
Okefenokee in the East,  
Moultrie and Pavo on the West,  
to the Gulf on the South.

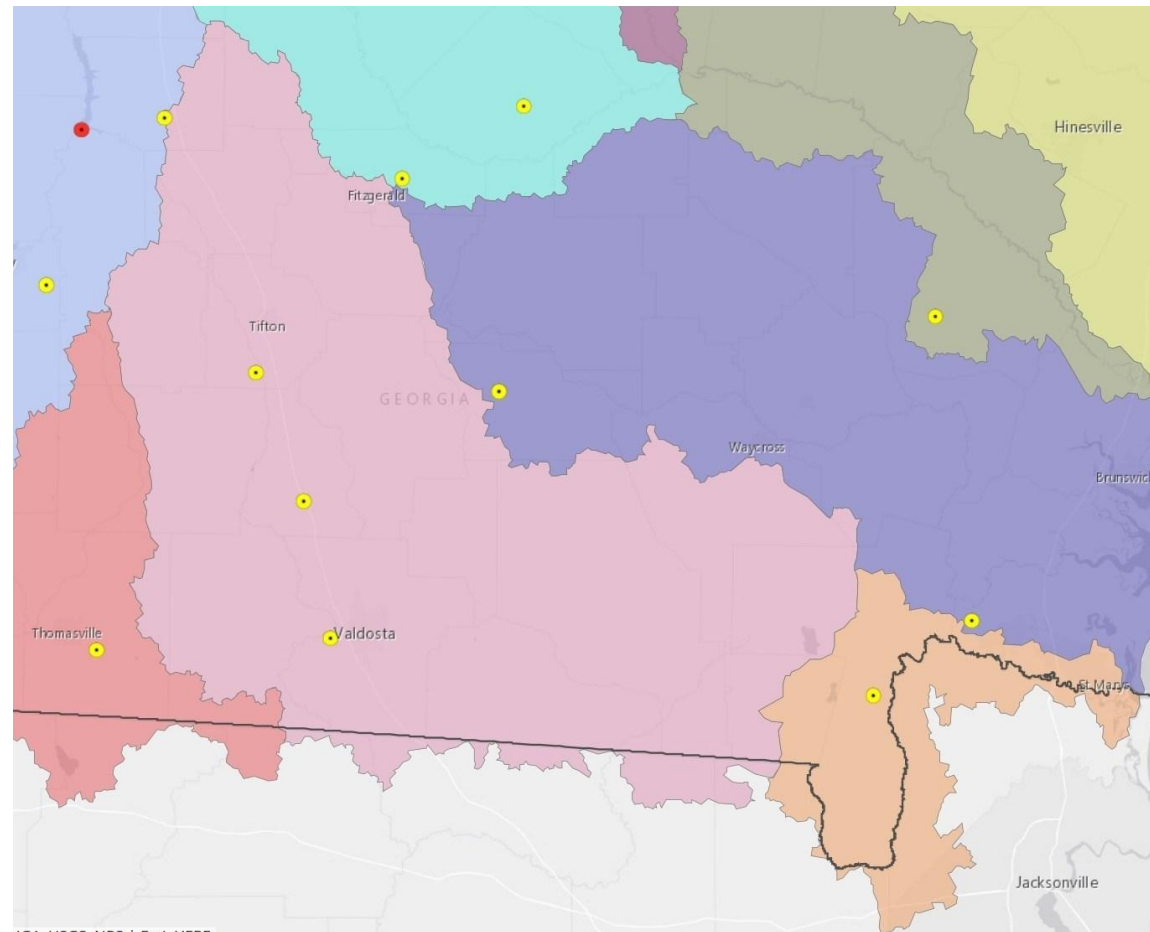
Above the Withlacoochee  
Confluence is the “Upper  
Suwannee” and below is the  
“Lower” but all of it is the  
Suwannee Basin.



# Landfills in WWALS Territory in GA

Three landfills:

- Tifton-Omega/  
Eldorado Rd landfill in  
Tift County,
- Cook County Taylor  
Road landfill,
- and Advanced  
Disposal Services'  
Evergreen Landfill,  
Inc. in Lowndes  
County.



# Coal Ash Bills: GA legislature

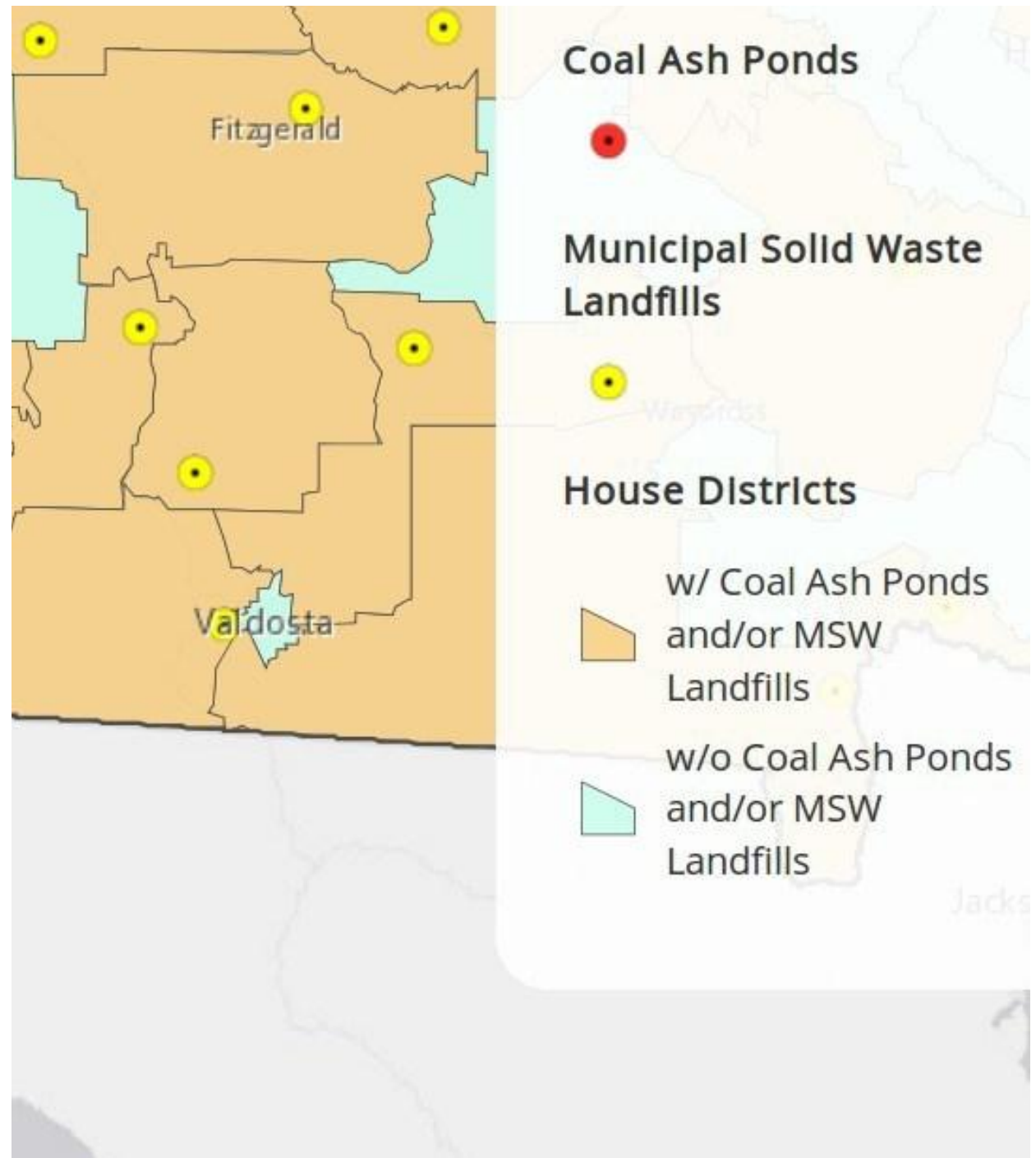
- [HB 387](#) requires utilities to get the proper permits before discharging coal ash wastewater into Georgia's waterways;
- [HB 388](#) ensures that landfills receiving coal ash have a good plan and take adequate precautions to prevent coal ash contamination
  - ***(remember, accepting coal ash now requires no special permits);***
- [SB 165](#) ensures that anyone who produces coal ash remains liable for that ash forever and that Georgians can take action against out of state producers if their water and communities are polluted

# Coal Ash Bills: GA legislature

- House bills both in [Natural Resources & Environment Committee](#) (HNRE)
- HNRE Vice-Chair: [Rep. Sam Watson District 172](#),  
404.656.0213, [sam.watson@house.ga.gov](mailto:sam.watson@house.ga.gov),
  - SW Tift, Colquitt, Thomas Counties
- HNRE Member: [Rep. John Corbett District 174](#),  
404-656-0213, [john.corbett@house.ga.gov](mailto:john.corbett@house.ga.gov),
  - SE Lowndes, Echols, Clinch, Ware, Charlton, Camden



# Coal Ash Districts: Georgia legislature



# Coal Ash Georgia Legislators

- Rep. Sam Watson District 172: includes
  - a. Tifton-Omega/Eldorado Rd landfill in Tift County.
    - i. In Georgia Senate District 13, Greg Kirk; also has.
      1. Crisp Co-US 41S Site 2 (Ph 4&5) MSWL (Crisp County)
      2. and Plant Crisp (Crisp County Power Commission) – Ash Pond, Warwick, Crisp County.

# Coal Ash Georgia Leg. cont.

- Rep. John Corbett District 174:
  - a. Camden Co-SR110 MSWL (Camden County),
    - i. also in GA Senate District 3, William T. Ligon, Jr. (Brunswick).
  - b. Chesser Island Road Landfill, Inc. MSWL (Charlton County): one of only six in the state that had told GA-EPD two weeks ago that it **does** plan to accept coal ash.
    - i. in GA Senate District 7, Tyler Harper; also has
      1. SR 50 MSWL (Atkinson County)
      2. Fitzgerald, Kiochee Church Rd, Ph.2 (Ben Hill County).

# Coal Ash Georgia Leg. fin

- Rep. [Amy Carter District 175](#):
  - a. Advanced Disposal Services' Evergreen Landfill, Inc., the one that has accepted coal ash before from TVA and JEA.
    - i. also in [GA Senate District 8, Ellis Black](#), also has:
      1. Cook County Taylor Road landfill,
        - also in [House District 170, Penny Houston](#)
- Rep. Dexter Sharper District 177 (Valdosta):
  - a. no landfills, but county seat of Lowndes County

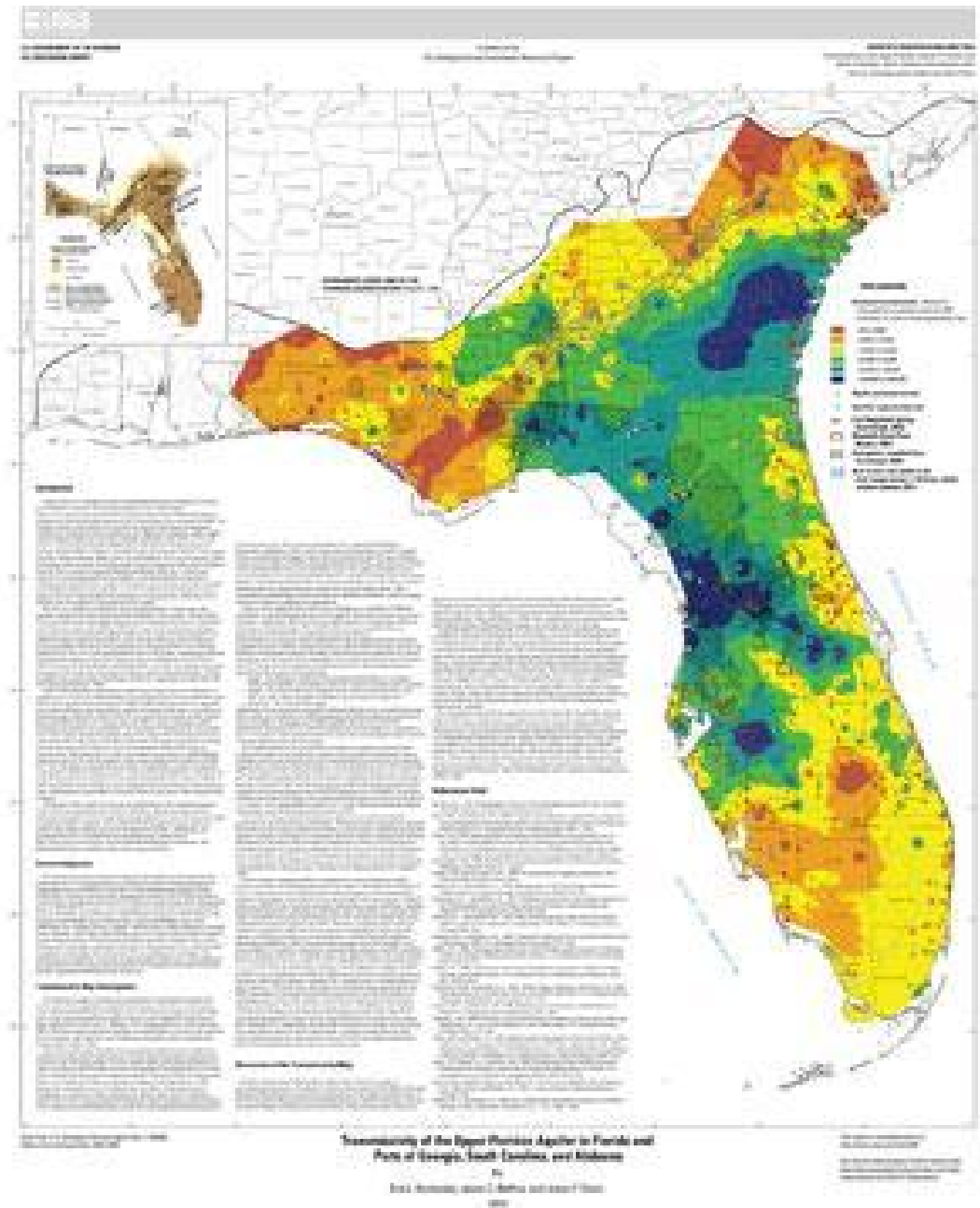
# Population center?

# Entire Suwannee River Basin:



# Floridan Aquifer

doesn't stop  
at state line



# Finish



# Contact

John S. Quarterman  
Suwannee RIVERKEEPER®  
229-242-0102  
[contact@suwanneeriverkeeper.org](mailto:contact@suwanneeriverkeeper.org)

Gretchen Quarterman  
Acting Executive Director  
850-290-2350  
[wwalswatershed@gmail.com](mailto:wwalswatershed@gmail.com)

WWALS Watershed Coalition, Inc.  
[www.wwals.net](http://www.wwals.net)  
PO Box 88, Hahira, GA 31632

*5th Annual BIG Little River Paddle Race  
Reed Bingham State Park, April 29, 2017*

