

Paddle Unspoiled two of the few U.S. Rivers, from south Georgia to north Florida

Photo: Withlacoochee River, by John S. Quarterman
Design: drdelane@gmail.com

Brochure funded by: WWALS members and donors

Wild and Scenic
The **Withlacoochee River** flows in its unruly tea-colored blackwater splendor past cypress, river birch, oaks, pines, herons, turtles, and alligators, through Nashville and Valdosta, over south Georgia shoals and springs, past the State Line Boat Ramp, annual venue of the WWALS Boomerang Paddle Race from Georgia into Florida and back, and Madison Blue Spring State Park in north Florida, to the Suwannee River.

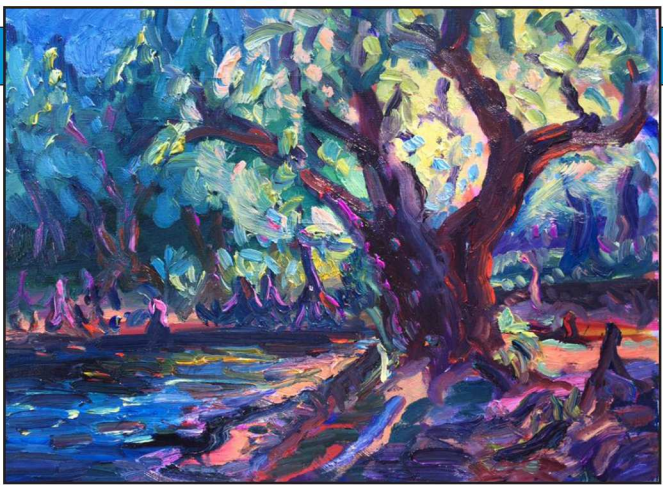
The **Little River** runs through Tifton to Reed Bingham State Park (RBSF), home of the annual WWALS BIG Little River Paddle Race, between Moutrie and Adel. Undammed below RBSF, the Little River flows between Barney and Hahira, and joins the Withlacoochee outside Valdosta in Lowndes County, the largest Suwannee Basin population center.

Trail Description
157 miles of boatable rivers.
Join a WWALS monthly paddle outing!
Most upstream:
• Youngs Mill Creek Landing on GA 37 at mile 97.7 of the 115-mile **Withlacoochee River**
• Kinard Bridge Road below Tifton at mile 59.2 of the 105-mile **Little River**
up to a week long and 121.6 miles:
59.2 miles down the Little River, then 62.4 miles down the Withlacoochee River to the **Suwannee River**.



Photo: John S. Quarterman, Spook Bridge, Withlacoochee River

"I've paddled hundreds of rivers, and the Little River is one of the most delightful, beautiful blackwater streams I've been on anywhere in the south...big with beauty. It was bordered by loblolly pines and live oaks, with water elm, river birches and willows on the banks, and with large cypress and Ogeechee tupelos growing in the channel itself. The trees were hung with Spanish moss, and some of the oaks supported gardens of resurrection ferns on their big branches. Under the trees, swamp azalea was in full bloom, its blossoms ranging from white to pink. The farther I went downstream, the more stately the forest became, protected in a widening swamp."
—Burt Kornegay



Painting: Tupelo at the confluence of the Little and Withlacoochee Rivers, by Julie Bowland

SPONSORING ORGANIZATIONS:
Valdosta-Lowndes County Tourism Authority
Valdosta-Lowndes County Development Authority
Valdosta-Lowndes County Parks & Rec. Authority
Brooks County, GA, Board of County Commissioners
Adel, Georgia, Mayor and City Council
Hahira, Georgia, Mayor and City Council
Valdosta, Georgia, Mayor and City Council

Etiquette

1. Carry out all trash with you.
2. Camp only where you have permission.
3. Do not cut or damage living trees.
4. Take only pictures, leave only footprints.
5. Control pets or leave them at home.
6. Respect wildlife.
7. Respect waterfront property.
 - Don't trespass on private property.
 - Minimize impacts to shore.
8. Be courteous to other water trail users.

"Intimate, shaded in its northern reaches) mysterious in its beauty – the Withlacoochee is one of the few Coastal Plain streams in which limestone ledges form small shoals. A second distinctive feature of the river is the occasional white sandbar on the insides of bends, which are perfect for swimming or camping."

—Suzanne Welander and Bob Sehlinger,
Canoeing and Kayaking Georgia (Menasha Ridge Press).

Help Protect Your Watershed

Become certified to perform Water Quality testing
Report invasive species to www.EDDMaps.org

Safety

1. Be prepared with life vests and cell phone.
2. Let someone know your float plan.
3. Beware of alligators: caution small children or pets.
4. Be extremely careful with campfires.

Mission



Photo: John S. Quarterman, Franklinville Landing, 2018

WWALS Watershed Coalition advocates for conservation and stewardship of the Withlacoochee, Willacoochee, Alapaha, Little, Santa Fe, and Suwannee River watersheds in south Georgia and north Florida through education, awareness, environmental monitoring, and citizen activities.

www.wwals.net

Thanks for a printing grant from

<http://www.garivers.org/gwtc/>
<http://www.wwals.net/maps/withlacoochee-river-water-trail/>