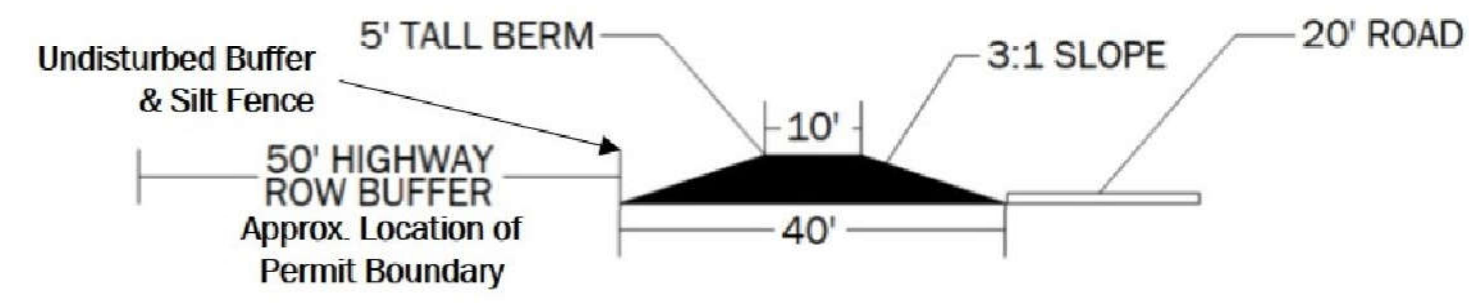


Total average estimated water losses 17%:
 * - Evaporation and Retention on tailings 16% (infiltration into surficial aquifer from tailings stockpile)
 ** - Retained on Final Product <1%

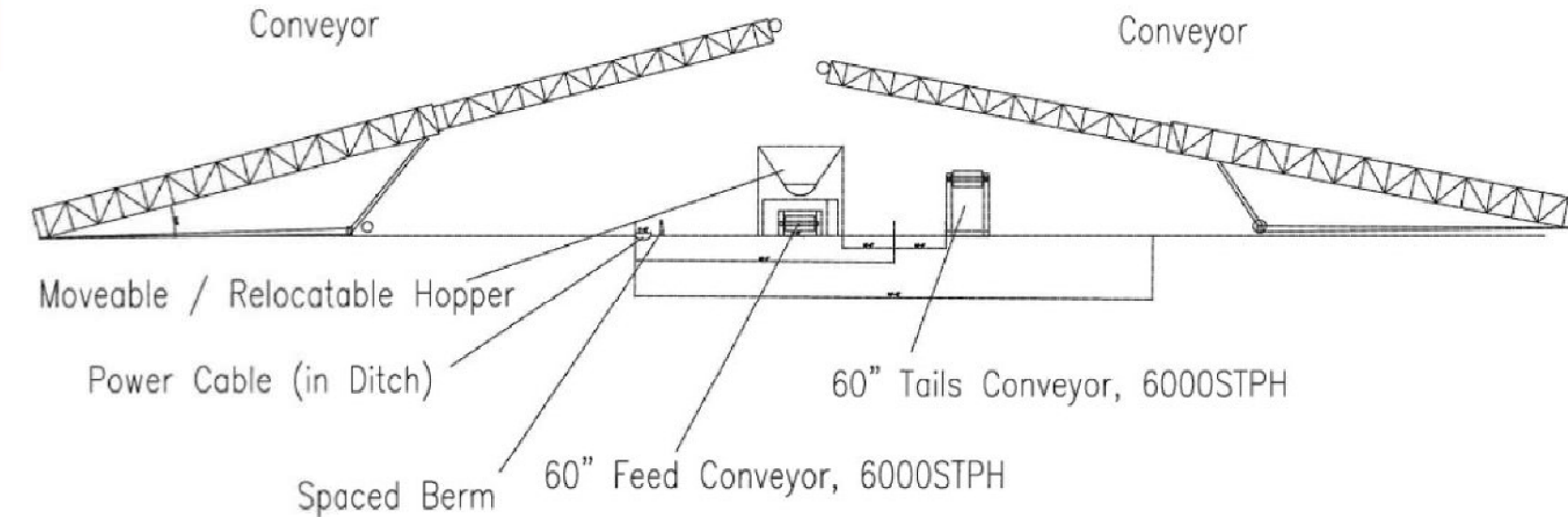
Dewatering of active mining pit during emergency equipment maintenance/repair
 *** - 0.6 million gallons per day (MGD) average not to exceed 100,000 gallons/day on a monthly average



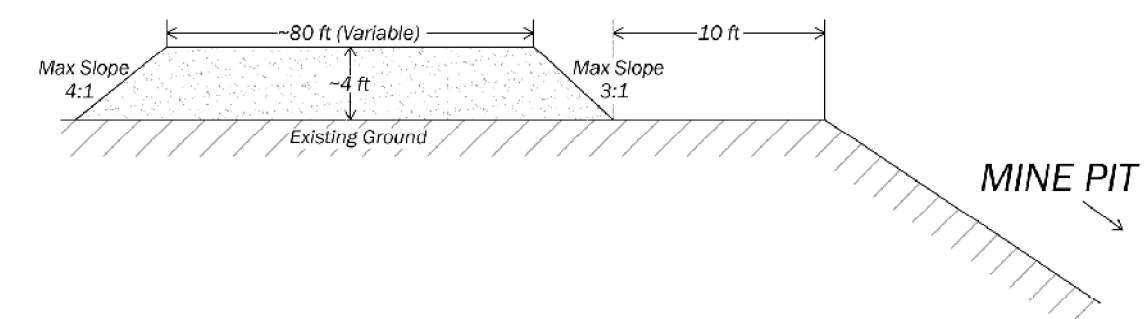
EXCAVATION PERIMETER & SAFETY BERM (Typ.)
 NOT TO SCALE

NOTES
 - Dragline advancement will be 100 to 200 feet per day; backfilling shall proceed no more than 500 feet (i.e. 5 to 7 days) behind the progressing mine pit.
 - See Sheet 14 for a more in-depth narrative regarding the mining process.

	Max Allowable
Mine Pit Sidewall Slope	34°
Mine Pit Depth	50 ft
Topsoil Stockpile Slope (Mine Pit Side)	3:1
Topsoil Stockpile Slope (Upgradient Side)	4:1
Topsoil Stockpile Height	Variable



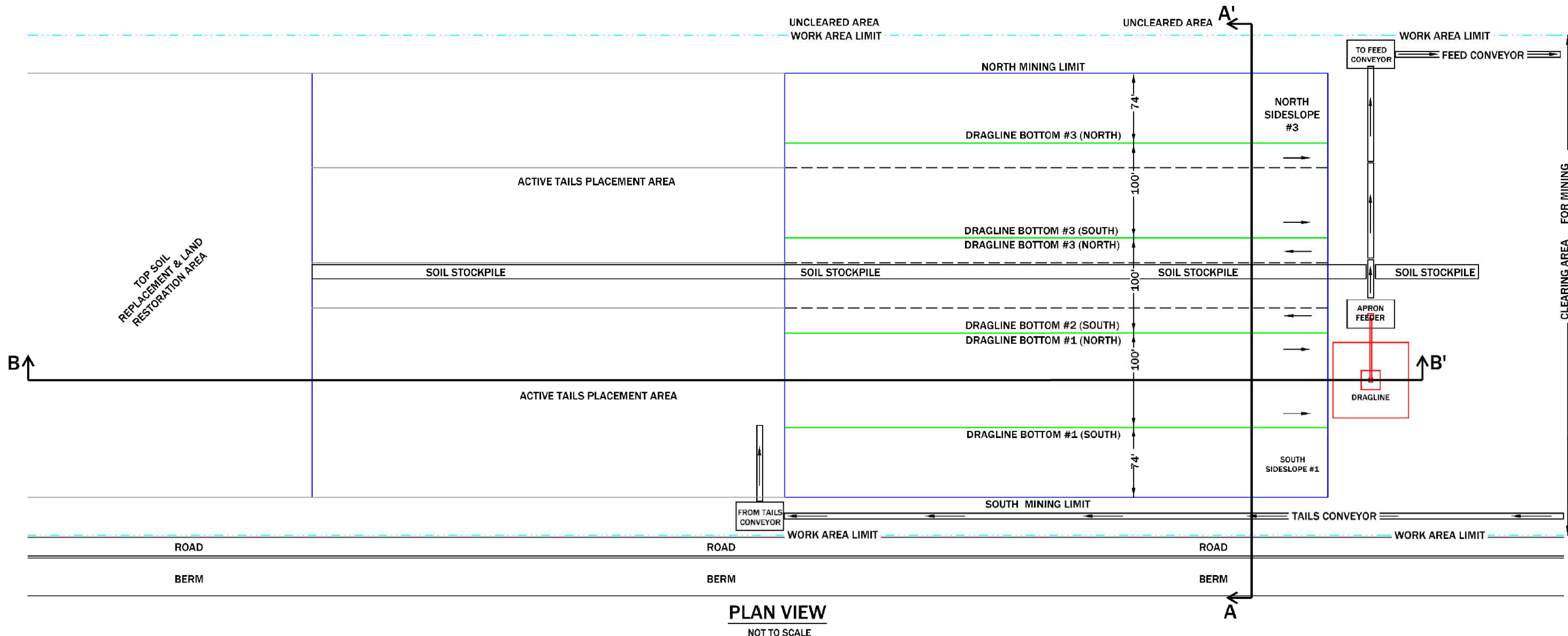
CONVEYOR DETAIL (Typical)



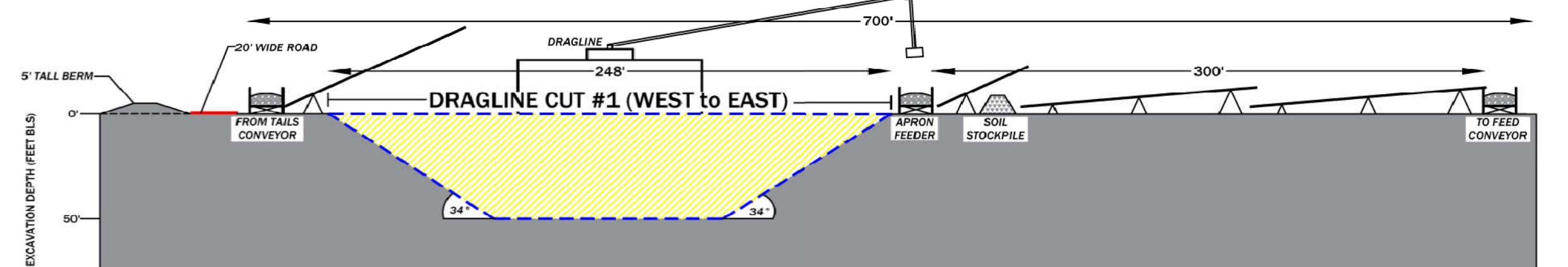
TOPSOIL STOCKPILE DUE TO MINING (Typical)

NOTES:
 1. All material will be hauled, utilizing trucks, between the permitted mine wet processing areas, and Mineral Separation Plant south of Highway 94.
 2. Process water will be piped to the Mineral Separation Plant from the southernmost well (FPW-01). Any wastewater from the Mineral Separation Plant will be hauled, by tanked trucks, to the Wet Concentration Plant for re-use or final discharge.

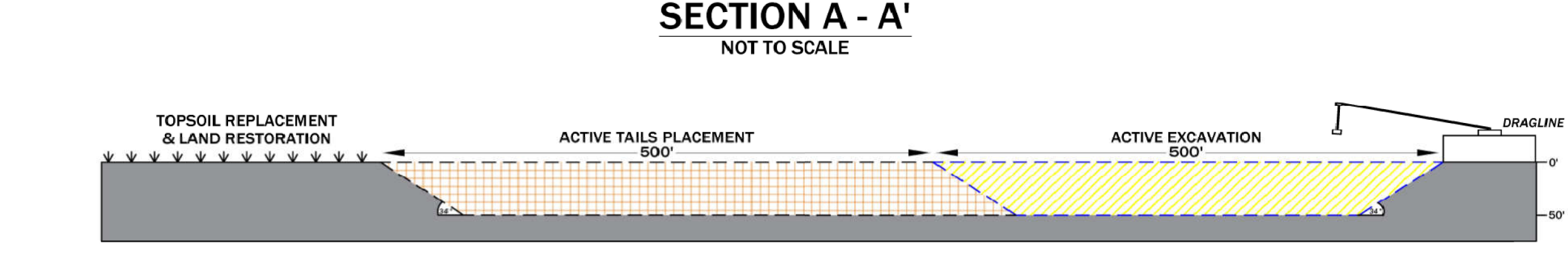
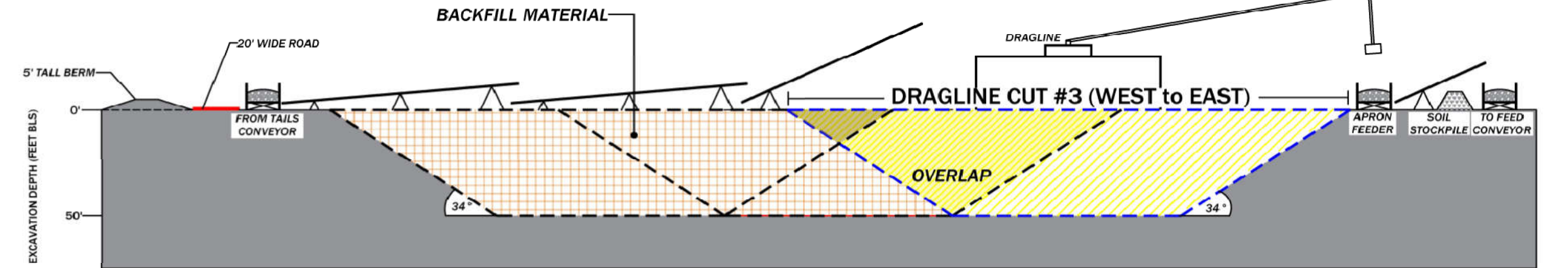
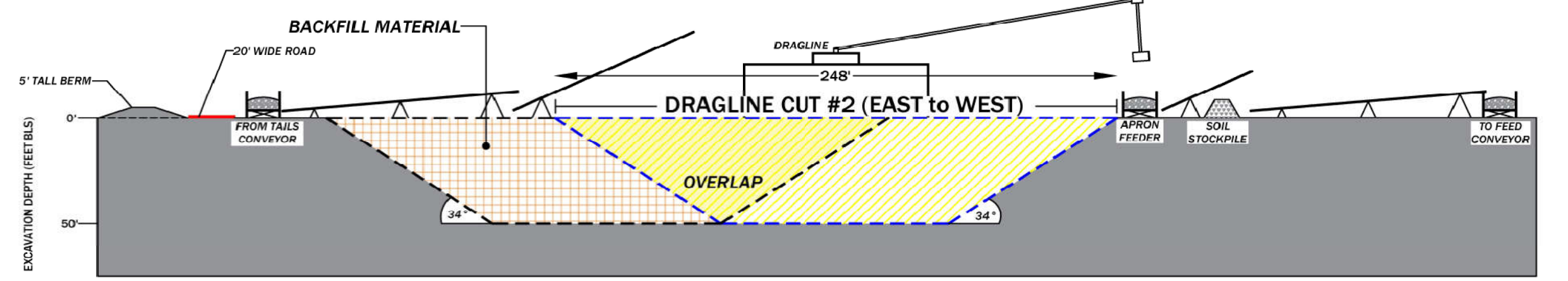
MINING PROCESS FLOW DIAGRAM



PLAN VIEW
 NOT TO SCALE



SECTION A - A'
 NOT TO SCALE



SECTION B - B'
 NOT TO SCALE

LEGEND

UNEXCAVATED MATERIAL	DRAGLINE EXCAVATION	BACKFILLED MATERIAL	OVERLAP
----------------------	---------------------	---------------------	---------



SHEET 5: MINING PLAN SHEET - PROCESS FLOW DIAGRAM, DETAILS & TYPICAL PROFILE/CROSS-SECTION
 TWIN PINES MINERALS, LLC SAUNDERS DEMONSTRATION MINE (ID NO. 2073)
 ST. GEORGE, CHARLTON COUNTY, GEORGIA



DRAWN BY: DEK
CHECKED BY: SGR
DRAWING DATE: 11/13/2020
REVISION DATE: 6/25/2021
TTL JOB NO.: 000180200804.00
APPROX. SCALE: N.T.S.