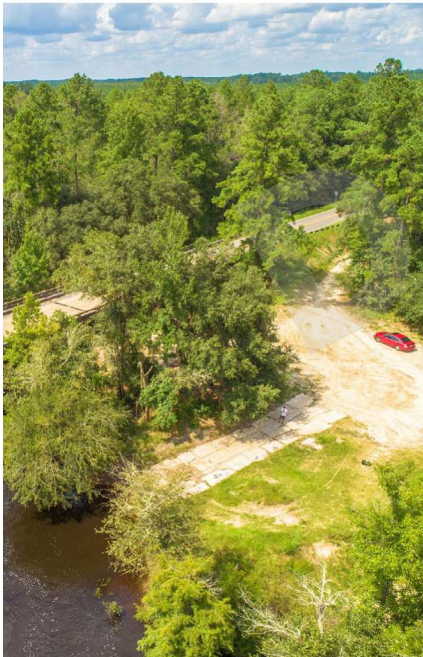




Vallotton Youth Complex

Source: <http://vlpra.com/205/Vallotton-Youth-Complex>



Nankin Boat Ramp

Source: <http://vlpra.com/173/Boat-Ramps>

- Shade and shelters, specifically around park facilities, amenities, and seating areas;
- Consistent palette of standards that harmonize colors, materials, amenities, furnishings, and fixtures throughout the park system;
- Increased mix of amenities and programmed and unprogrammed things to do in parks; and
- Stormwater best management practices (BMPs).

**Appendix A1, Recommended Improvements to Existing Parks from the 2013 Master Plan**, specifically lists proposed improvements for the VLPRA parks.

## Opportunity for Future Amateur Athletic Events

Over the years, the Valdosta-Lowndes County Parks and Recreation Authority has done a great job of building athletics-focused parks. Many of these parks have the potential to host future amateur athletic events due to the number of athletic facilities, as well as amenities such as parking, restrooms, shelters, and large, flexible open spaces. Specific parks that appear to have the potential to host future amateur athletic events are:

- Freedom Park;
- McKey Park/Harry B. Anderson Tennis Center;
- North Lowndes Park and Skate Park;
- South Lowndes Park and Recreation Complex;
- Vallotton Big Field; and
- Vallotton Youth and Athletic Complex.

## Opportunity for Park Expansion Through Adjacent Land Acquisition

One way that the VLPRA can grow the park system is through the acquisition of land adjacent to existing parks. While many of the system's parks appear to be constrained by neighboring uses, some have adjacent lands that may be available for acquisition. These include:

- Alapaha Boat Ramp;
- Knights Ferry Boat Ramp;
- Langdale Park;
- Nankin Boat Ramp; and
- State Line Boat Ramp.