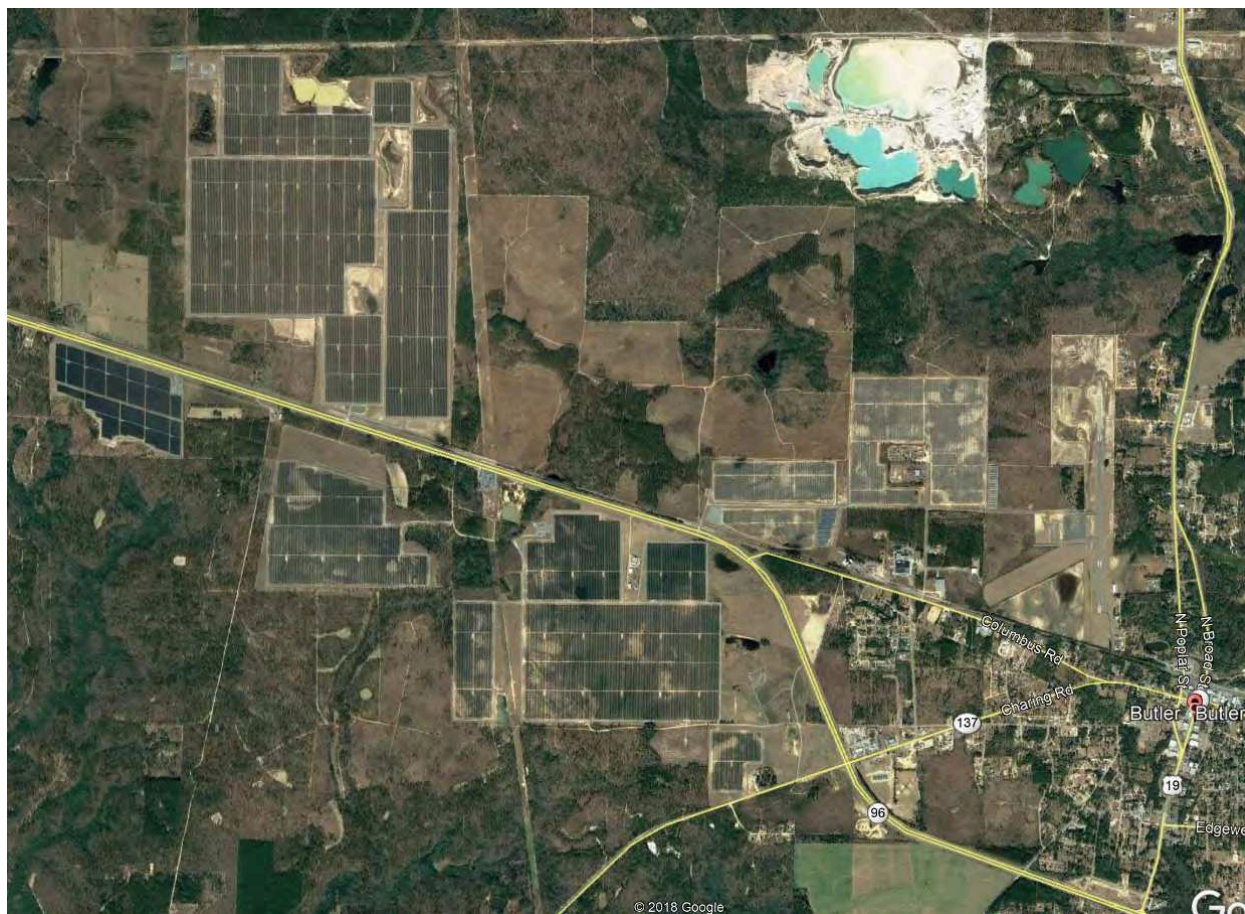


604: Butler GA Solar, Butler, GA

This project was built in 2016 on 2,395 acres for a 103 MW project where the closest home is 255 feet from the closest panel.

Adjoining Use Breakdown

	Acreage	Parcels
Residential	1.65%	32.08%
Agricultural	73.39%	39.62%
Agri/Res	23.05%	11.32%
Commercial	0.64%	9.43%
Industrial	0.19%	3.77%
Airport	0.93%	1.89%
Substation	0.15%	1.89%
Total	100.00%	100.00%