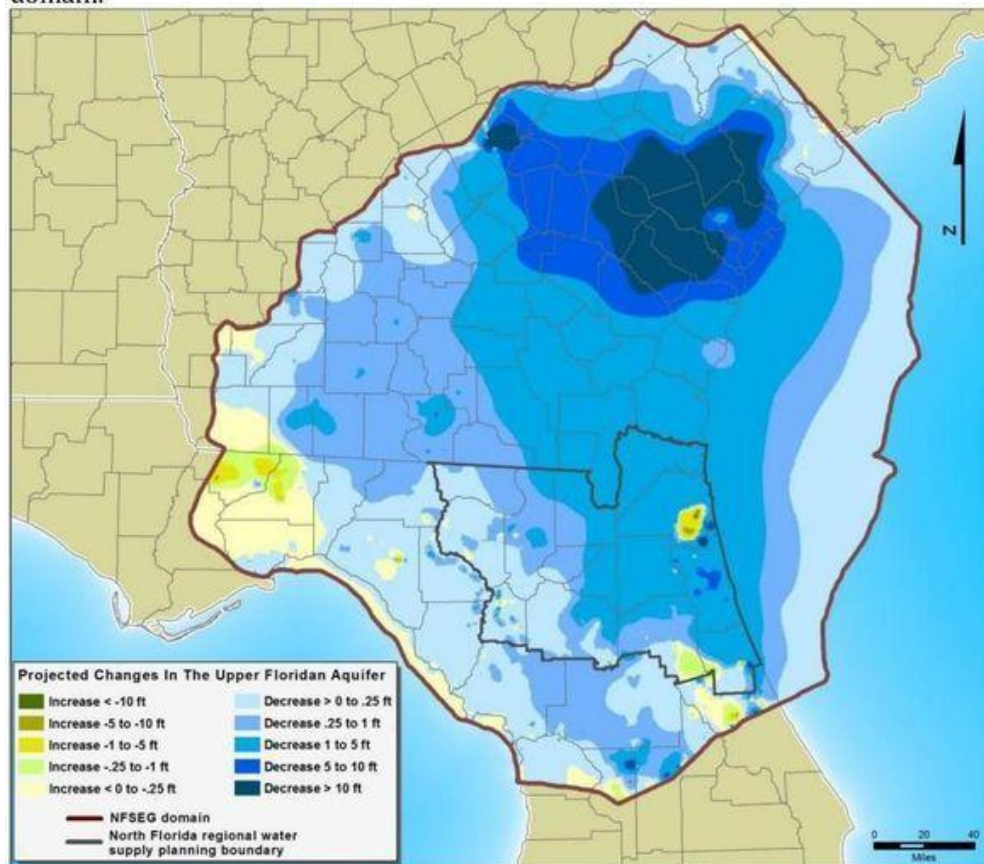


North Florida Regional Water Supply Plan (NFRWSP) by Florida's Suwannee and St Johns River Water Management Districts.<sup>31</sup> If current withdrawals from Savannah are affecting Florida's groundwater, then this proposed mine site will likely exacerbate those impacts.

Figure C3: Change in Upper Floridan aquifer from 2035 withdrawals within the NFSEG domain.



The Floridan Aquifer also feeds the numerous springs along the Suwannee, Santa Fe, Withlacoochee, and other Rivers in the Springs Heartland of Florida, which is a major contributor to tourism, which is the biggest industry of Florida. Those springs and rivers are already affected by lower flows, which any further reduction would make even worse.

### **A demonstration mine will probably expand**

Since the application is for a demonstration mine, citing the northern boundary of the demonstration area is misleading. According to U.S. FWS, the rest of the land the miners own goes north to within 400 feet of the Okefenokee Swamp and within half a mile of the Refuge.<sup>32</sup> That northwest parcel of the miners' land was featured as "Alternative 2 - Loncale" in the miners' original 2019 permit application to the Army Corps of Engineers.