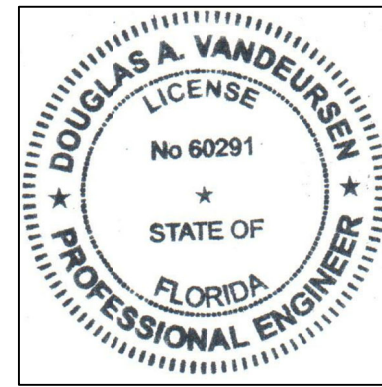


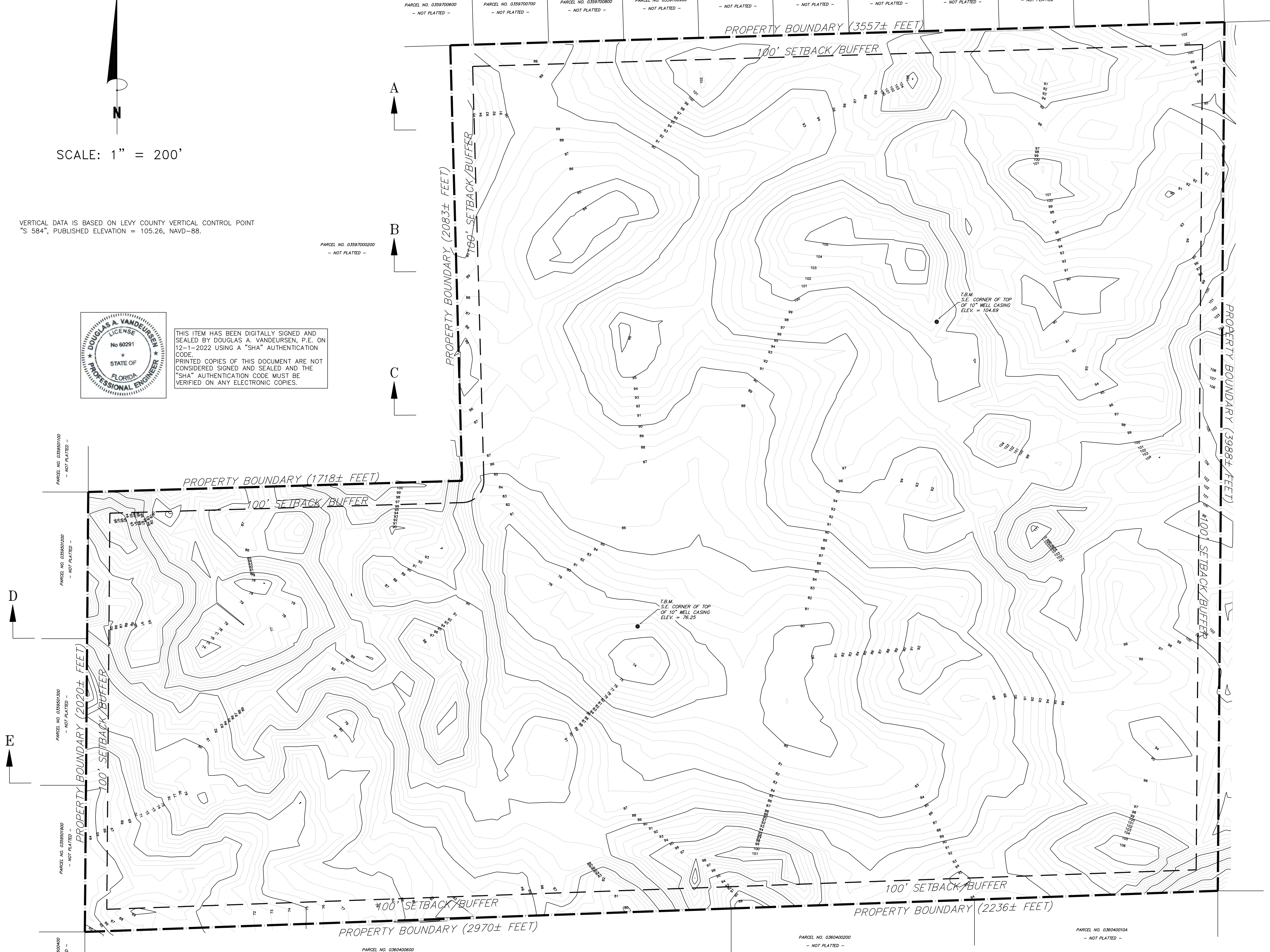
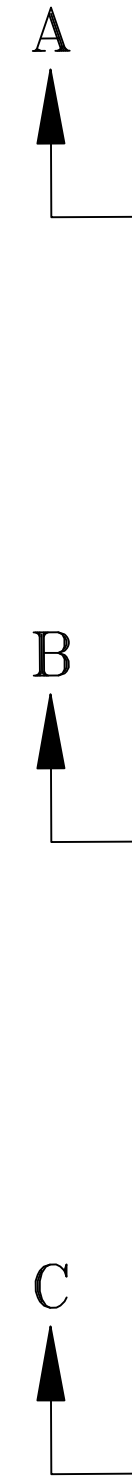
SCALE: 1" = 200'

VERTICAL DATA IS BASED ON LEVY COUNTY VERTICAL CONTROL POINT "S 584", PUBLISHED ELEVATION = 105.26, NAVD-88.

PARCEL NO. 0359700200  
- NOT PLATTED -



THIS ITEM HAS BEEN DIGITALLY SIGNED AND SEALED BY DOUGLAS A. VANDEURSEN, P.E. ON 12-1-2022 USING A "SHA" AUTHENTICATION CODE. PRINTED COPIES OF THIS DOCUMENT ARE NOT CONSIDERED SIGNED AND SEALED AND THE "SHA" AUTHENTICATION CODE MUST BE VERIFIED ON ANY ELECTRONIC COPIES.



**DNM ENGINEERING & ASSOCIATES, INC.**  
OCALA, FLORIDA 34478  
P.O. BOX 42  
(352) 624-2068  
FAX (352) 622-6643  
CAN: 9724

**TOPOGRAPHY MAP**  
3RT SAND MINE  
N.E. 110TH AVENUE  
BRONSON, LEVY COUNTY, FLORIDA

DRN	CHK	DATE	DESCRIPTION
DAV	DAV	13 SEP 22	ORIGINAL ISSUE
DAV	DAV	01 DEC 22	REVISED PER SWFMD COMMENTS

Project No. 22-084

**SM3**

Sheet 5 Of 8