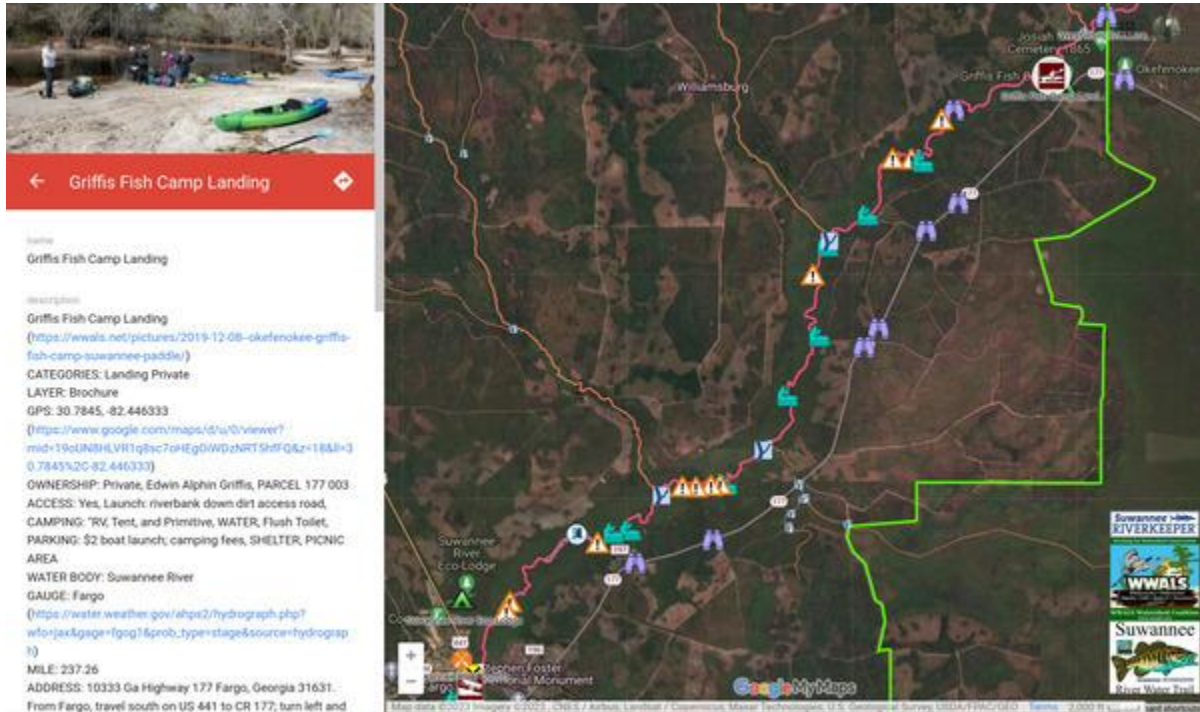


Griffis Fish Camp Landing:

The green line on this map is the boundary of the Okefenokee National Wildlife Refuge (ONWR). Griffis Fish Camp is highlighted by the white circle just to the left (downstream) of that line.



<https://www.google.com/maps/d/u/0/viewer?mid=19oUN8HLVR1q8sc7oHEgOiwDzNRT5hfFQ&ll=30.736971546209737%2C-82.49656979392364&z=13>

MILE: 237.26; 14.35 miles upstream from Fargo Ramp.