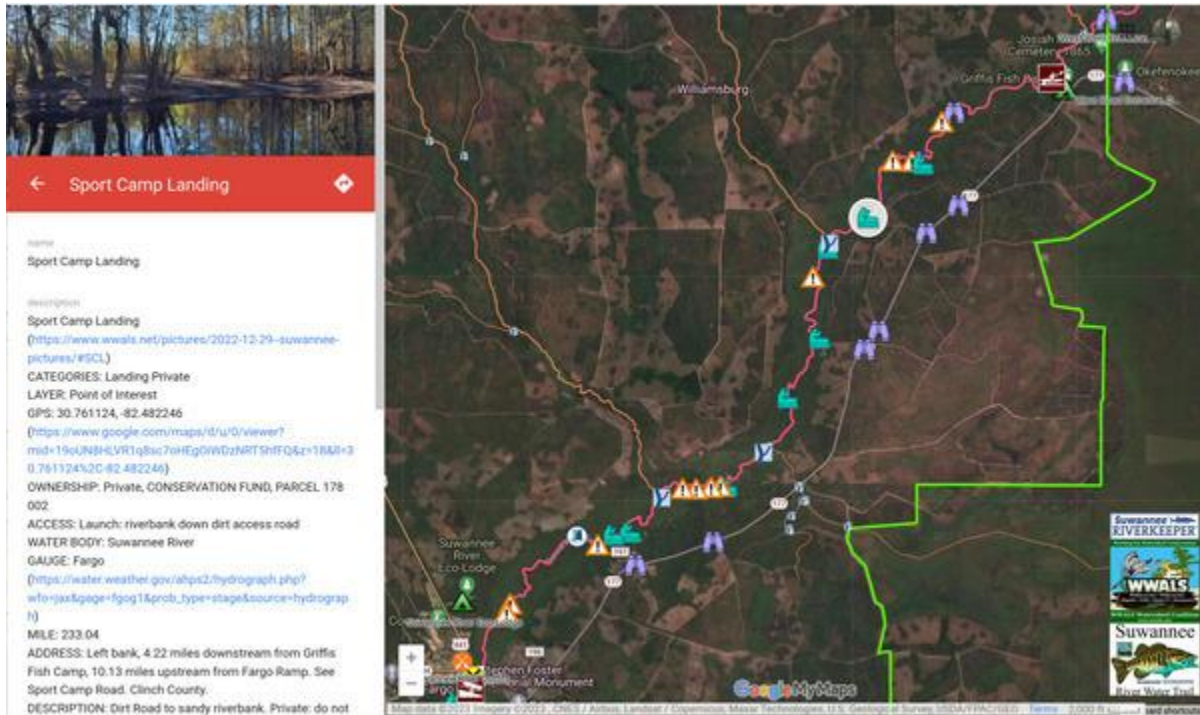


Sport Camp Landing:

The white circle highlights Sport Camp Landing. It is quite close to Allen Camp Landing, so expense is an issue, picking one or the other to improve would be prudent. If we're trying to divide the long stretch into thirds, Sport Camp Landing is preferable, since it is about a third of the way to Fargo.



<https://www.google.com/maps/d/u/0/viewer?mid=19oUN8HLVR1q8sc7oHEgOiwDzNRT5hfFQ&ll=30.736971546209737%2C-82.49656979392364&z=13>
MILE: 233.04; 4.22 miles downstream from Griffis Fish Camp, 10.13 miles upstream from Fargo Ramp