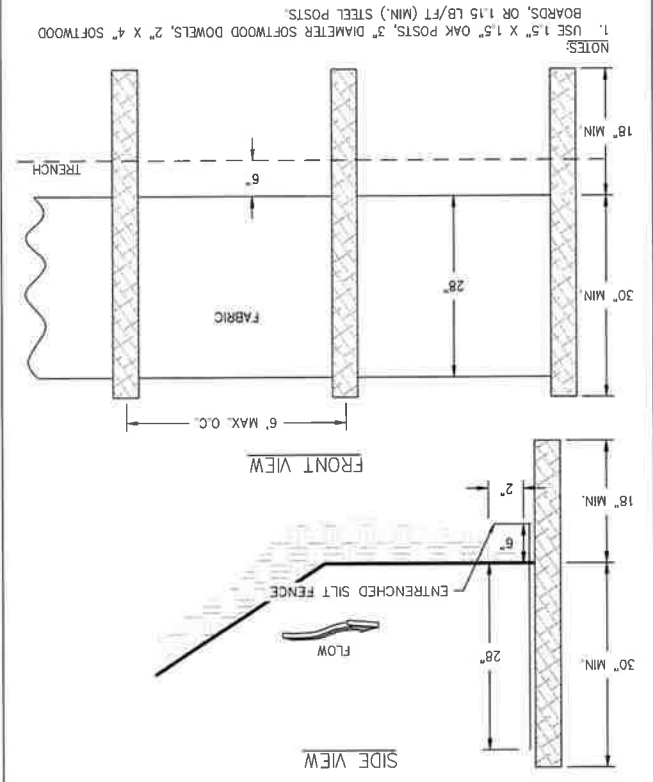
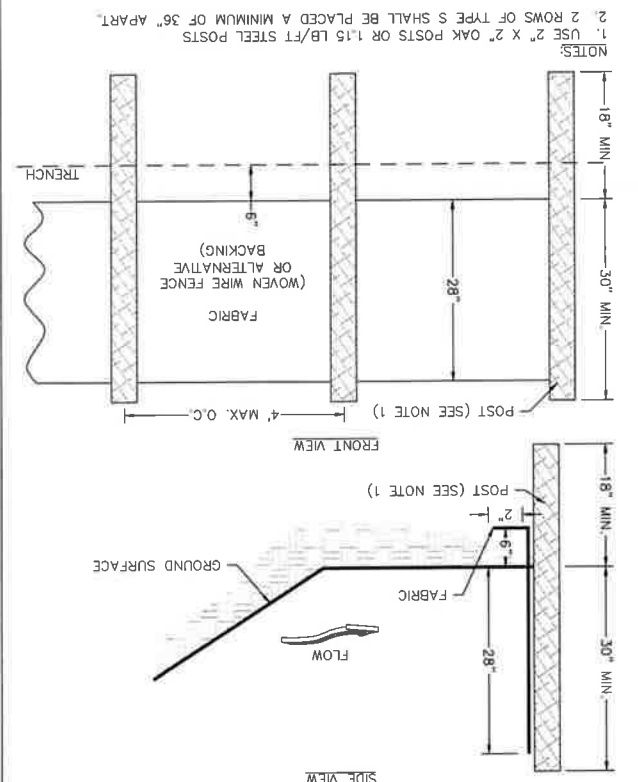


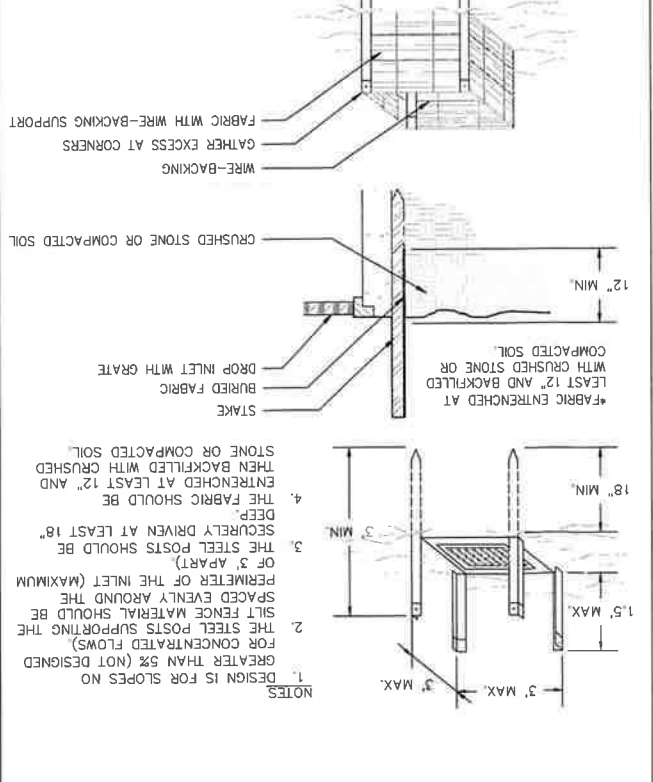
**SD1-S SEDIMENT BARRIER - NON-SENSITIVE**  
N.T.S.



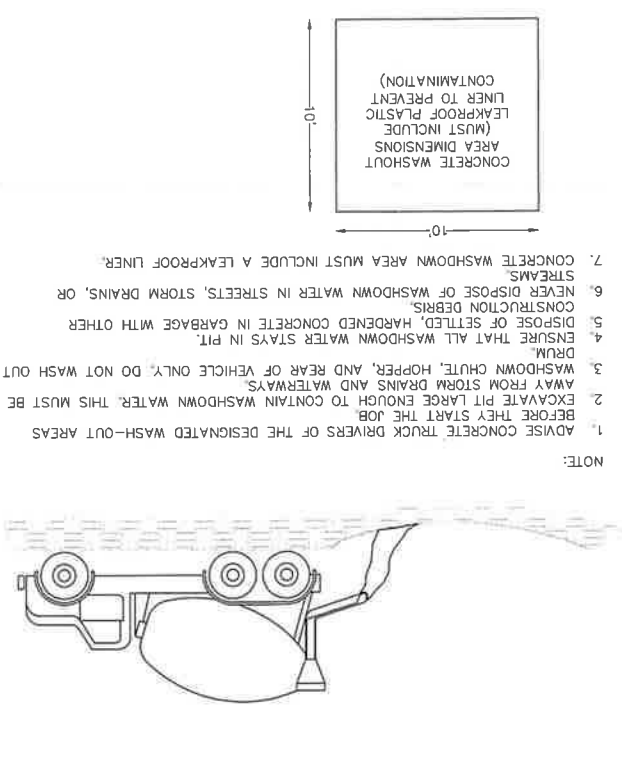
**SD1-S SEDIMENT BARRIER - SENSITIVE**  
N.T.S.



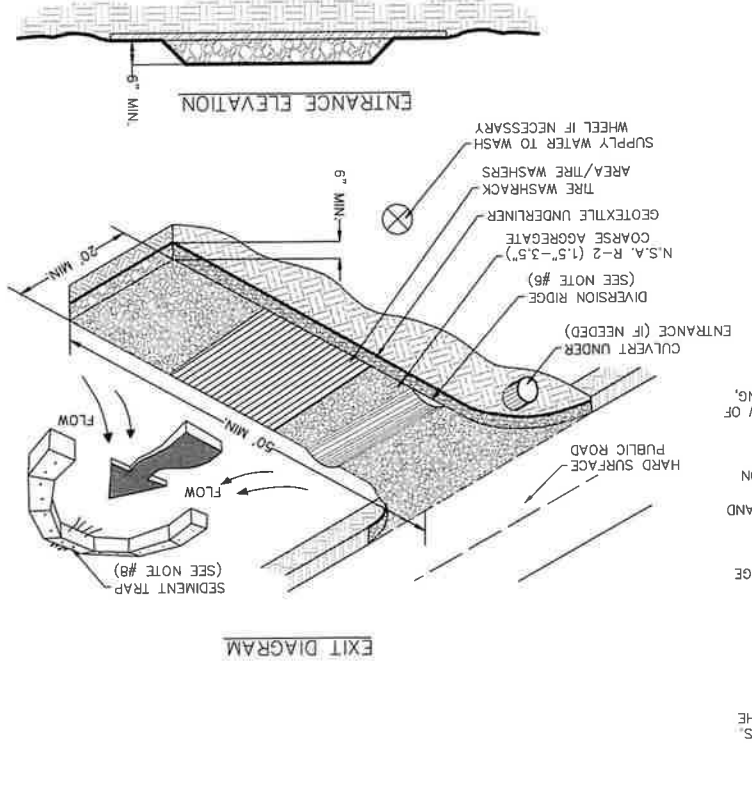
**SD2-F FABRIC INLET PROTECTION**  
N.T.S.



**CONCRETE TRUCK WASHDOWN**  
N.T.S.

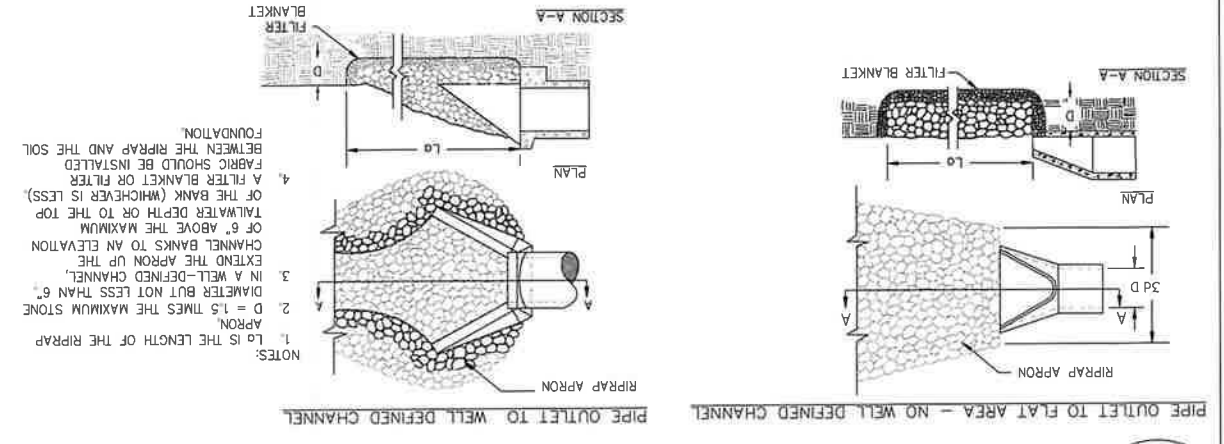


**CO CONSTRUCTION EXIT**  
N.T.S.



- NOTES:
1. AVOID LOCATING ON STEEP SLOPES OR AT CURVES ON PUBLIC ROADS.
  2. REMOVE ALL VEGETATION AND OTHER UNSUITABLE MATERIAL FROM THE FOUNDATION AREA, GRADE, AND CROWN FOR POSITIVE DRAINAGE.
  3. AGGREGATE SIZE SHALL BE IN ACCORDANCE WITH NATIONAL STONE ASSOCIATION R-2 (1.5"-3.5" STONE).
  4. GRAVEL PAD SHALL HAVE A MINIMUM THICKNESS OF 6".
  5. PAD WIDTH SHALL EQUAL FULL WIDTH AT ALL POINTS OF VEHICULAR EGRESS, BUT NO LESS THAN 20'.
  6. DIVERSION RIDGE SHOULD BE CONSTRUCTED WHEN GRADE TOWARD STABILIZED WITH CRUSHED STONE THAT DRAINS INTO AN APPROVED SEDIMENT TRAP OR SEDIMENT BASIN (DIVERT ALL SURFACE RUNOFF AND DRAINAGE FROM THE ENTRANCE TO A SEDIMENT CONTROL DEVICE).
  7. PAVED AREA IS GREATER THAN 2%.
  8. WHEN WASHING IS REQUIRED, IT SHOULD BE DONE ON AN AREA STABILIZED WITH CRUSHED STONE THAT DRAINS INTO AN APPROVED SEDIMENT TRAP OR SEDIMENT BASIN (DIVERT ALL SURFACE RUNOFF AND DRAINAGE FROM THE ENTRANCE TO A SEDIMENT CONTROL DEVICE).
  9. WASHRACKS AND/OR TIRE WASHERS MAY BE REQUIRED DEPENDING ON SCALE AND CIRCUMSTANCE. IF NECESSARY, WASHRACK DESIGN MAY CONSIST OF ANY MATERIAL THAT PREVENTS TRACKING AND/OR FLOW OF SEDIMENT.
  10. MAINTAIN AREA IN A WAY THAT PREVENTS TRACKING AND/OR FLOW OF MUD ONTO PUBLIC RIGHTS-OF-WAY. THIS MAY REQUIRE TOP DRESSING, REPAIR AND/OR CLEANOUT OF ANY MEASURES USED TO TRAP SEDIMENT.

**STORM DRAIN OUTLET PROTECTION**  
N.T.S.



**OUTLET PROTECTION DIMENSIONS**

OUTLET	PIPE DIA. (ft.)	FLOW RATE (cfs)	VELOCITY (fps)	TAILWATER CONDITION	APRON LEN. (ft.)	HEADWALL WIDTH (ft.)	DOWNSTREAM AVG. STONE DIA. (50%, ft.)	STONE DEPTH (D, ft.)
A-1	5.0	138.0	9.0	MIN	30	15	35	1.8
B-1	1.5	1.1	2.9	MIN	9	4.5	10.5	0.6
C-1	1.5	1.2	3.0	MIN	9	4.5	10.5	0.6
D-1	1.5	2.2	5.3	MIN	9	4.5	10.5	0.6
E-1	1.5	0.6	2.5	MIN	9	4.5	10.5	0.6

**51-003**  
ESPC DETAILS  
(SHEET 3 OF 3)

**DRAFT**

SCALE: N.T.S.  
DESIGNED BY: DEA  
CHECKED BY: MCM  
SUBMITTAL DATE: 03-24-23  
JOB NO. 0026-40

REVISES  
DATE DESCRIPTION

**OLD CLAYVILLE ROAD WIDENING**  
P#0016285  
LAND LOT 64 & 29 OF THE  
11TH LAND DISTRICT  
CITY OF VALDOSTA  
LOWMEDES COUNTY  
STATE OF GEORGIA

GA CORP# 0419099  
FL CORP# P0400002135  
F.O. Box 2830  
2808 Inver Parkwood Road  
Valdosta, GA 31504  
Telephone: 229-253-0900  
Fax: 229-253-1942  
E-mail: lea@lea-pc.com

