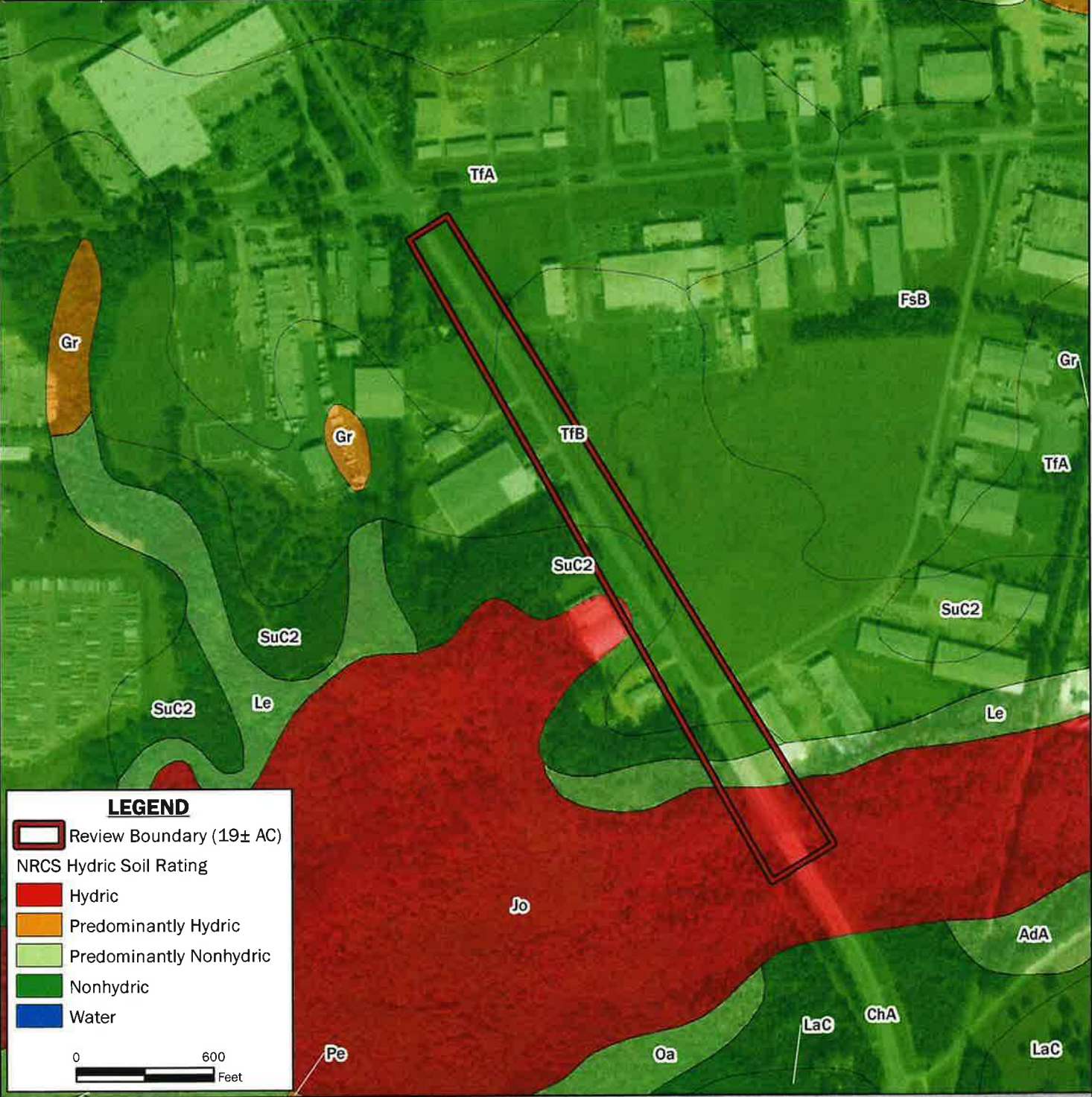


Map Unit Symbol	Description	Hydric Percentage	Hydric Description
Jo	Johnston loam	100	Hydric
Le	Leefield loamy sand, 0 to 2 percent slopes	5	Predominantly Nonhydric
SuC2	Sunsweet sandy loam, 5 to 8 percent slopes, eroded	0	Nonhydric
TfA	Tifton loamy sand, 0 to 2 percent slopes	0	Nonhydric
TfB	Tifton loamy sand, 2 to 5 percent slopes	0	Nonhydric



LEGEND

- Review Boundary (19± AC)
- NRCS Hydric Soil Rating
- Hydric
- Predominantly Hydric
- Predominantly Nonhydric
- Nonhydric
- Water

0 600 Feet



FIGURE 4: NRCS HYDRIC SOILS RATING MAP
 LOVELL ENGINEERING ASSOCIATES
 OLD CLYATTVILLE ROAD WIDENING
 VALDOSTA, LOWNDES COUNTY, GEORGIA
BASEMAP: Maxar Technologies, Vivid Imagery 11/19/2020 (0.31 m Resolution)

DRAWN BY: JDM
CHECKED BY: DEK
DRAWING DATE: 4/28/2023
REVISION DATE: N/A
TTL JOB NO.: 21-07-00563.00
APPROX. SCALE: 1 in = 600 ft