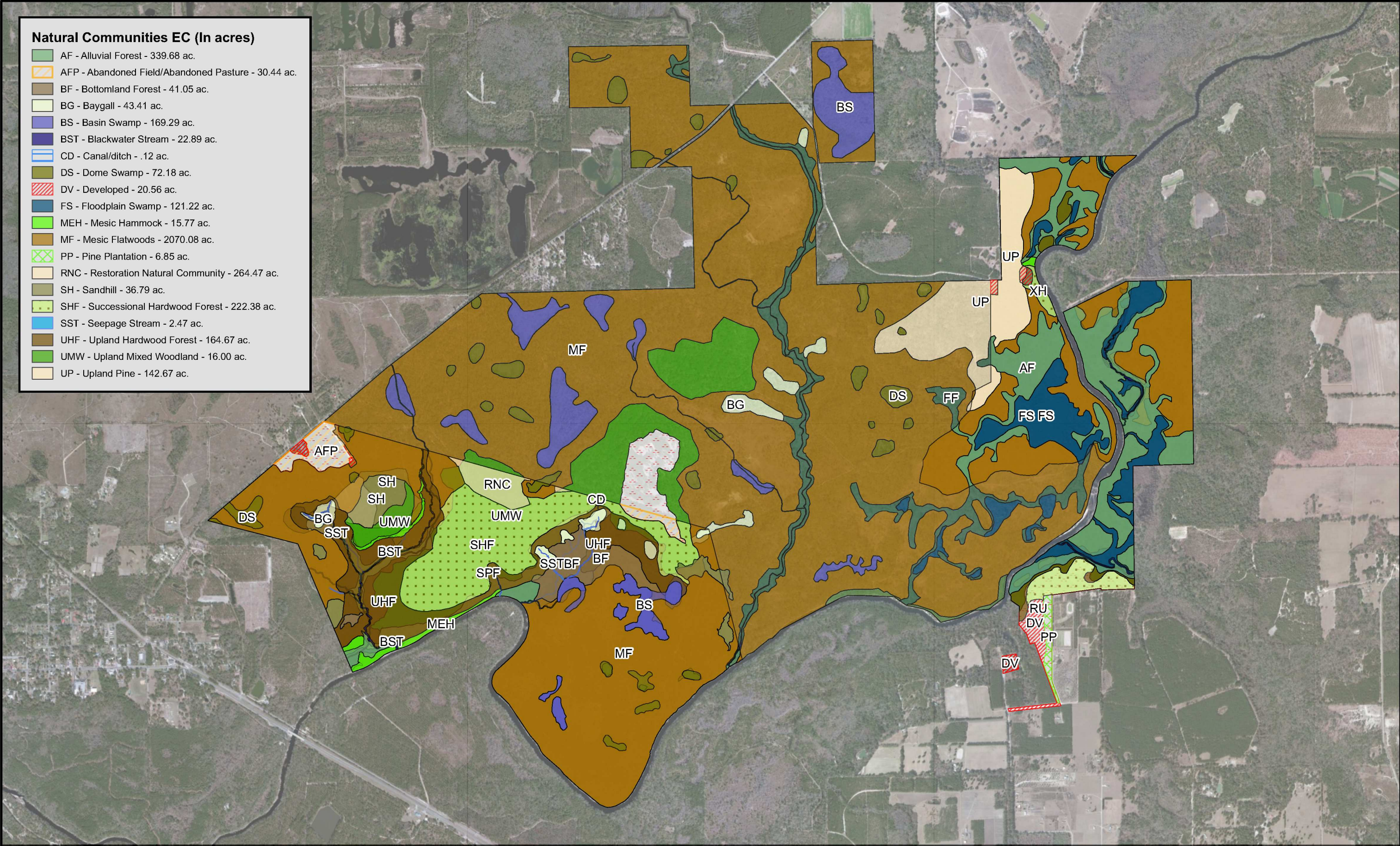


Natural Communities EC (In acres)

- AF - Alluvial Forest - 339.68 ac.
- AFP - Abandoned Field/Abandoned Pasture - 30.44 ac.
- BF - Bottomland Forest - 41.05 ac.
- BG - Baygall - 43.41 ac.
- BS - Basin Swamp - 169.29 ac.
- BST - Blackwater Stream - 22.89 ac.
- CD - Canal/ditch - .12 ac.
- DS - Dome Swamp - 72.18 ac.
- DV - Developed - 20.56 ac.
- FS - Floodplain Swamp - 121.22 ac.
- MEH - Mesic Hammock - 15.77 ac.
- MF - Mesic Flatwoods - 2070.08 ac.
- PP - Pine Plantation - 6.85 ac.
- RNC - Restoration Natural Community - 264.47 ac.
- SH - Sandhill - 36.79 ac.
- SHF - Successional Hardwood Forest - 222.38 ac.
- SST - Seepage Stream - 2.47 ac.
- UHF - Upland Hardwood Forest - 164.67 ac.
- UMW - Upland Mixed Woodland - 16.00 ac.
- UP - Upland Pine - 142.67 ac.



BIG SHOALS STATE PARK
Natural Communities - Existing Conditions



Sources: ESRI; Florida Department of Environmental Protection
This graphical representation is provided for informational purposes and should not be considered authoritative for navigational, engineering, legal, and other uses.