


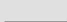
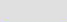
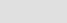
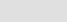
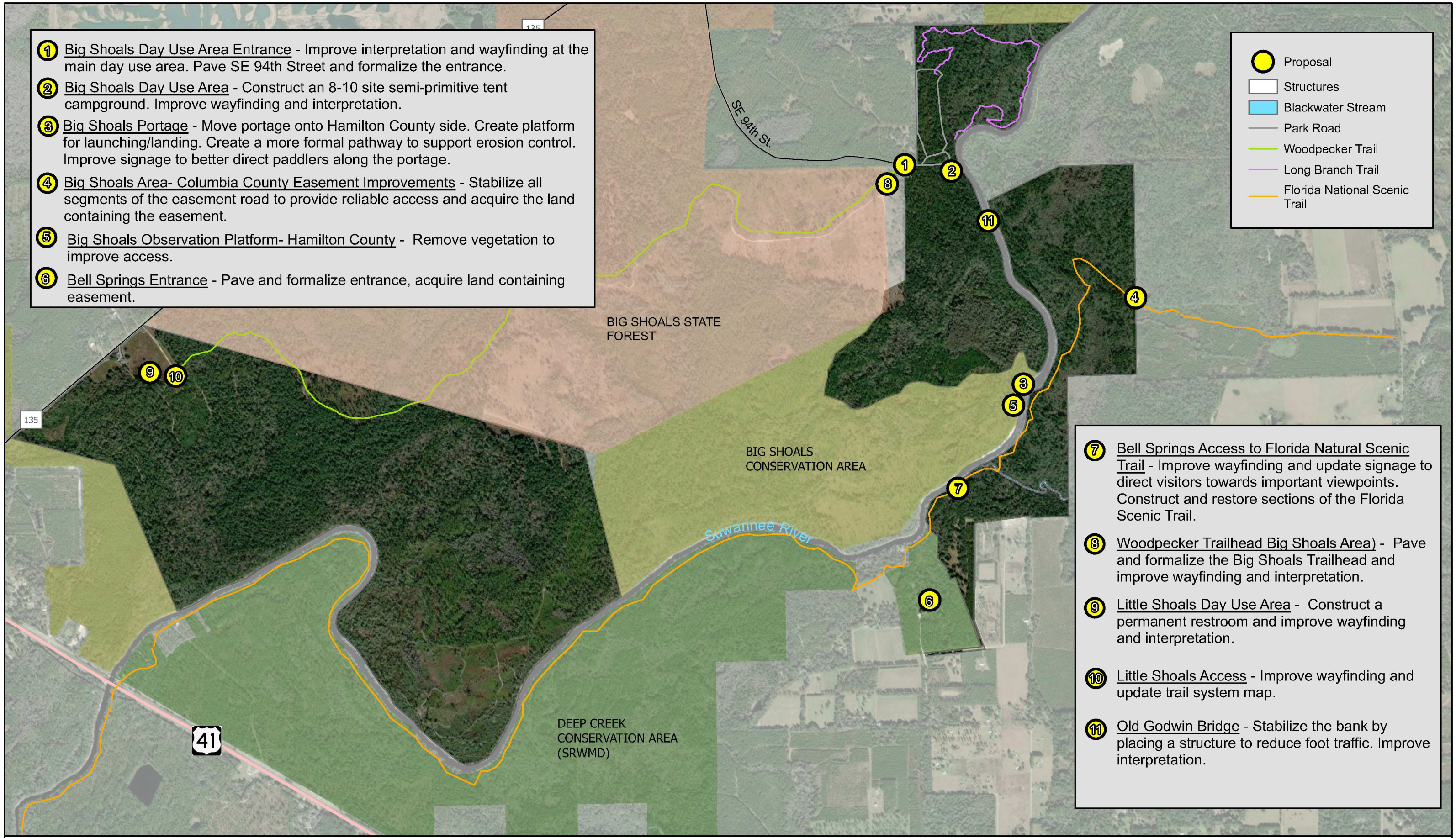


- ① **Big Shoals Day Use Area Entrance** - Improve interpretation and wayfinding at the main day use area. Pave SE 94th Street and formalize the entrance.
- ② **Big Shoals Day Use Area** - Construct an 8-10 site semi-primitive tent campground. Improve wayfinding and interpretation.
- ③ **Big Shoals Portage** - Move portage onto Hamilton County side. Create platform for launching/landing. Create a more formal pathway to support erosion control. Improve signage to better direct paddlers along the portage.
- ④ **Big Shoals Area- Columbia County Easement Improvements** - Stabilize all segments of the easement road to provide reliable access and acquire the land containing the easement.
- ⑤ **Big Shoals Observation Platform- Hamilton County** - Remove vegetation to improve access.
- ⑥ **Bell Springs Entrance** - Pave and formalize entrance, acquire land containing easement.

-  Proposal
-  Structures
-  Blackwater Stream
-  Park Road
-  Woodpecker Trail
-  Long Branch Trail
-  Florida National Scenic Trail



- ⑦ **Bell Springs Access to Florida Natural Scenic Trail** - Improve wayfinding and update signage to direct visitors towards important viewpoints. Construct and restore sections of the Florida Scenic Trail.
- ⑧ **Woodpecker Trailhead Big Shoals Area)** - Pave and formalize the Big Shoals Trailhead and improve wayfinding and interpretation.
- ⑨ **Little Shoals Day Use Area** - Construct a permanent restroom and improve wayfinding and interpretation.
- ⑩ **Little Shoals Access** - Improve wayfinding and update trail system map.
- ⑪ **Old Godwin Bridge** - Stabilize the bank by placing a structure to reduce foot traffic. Improve interpretation.



Big Shoals State Park

Conceptual Land Use Plan

