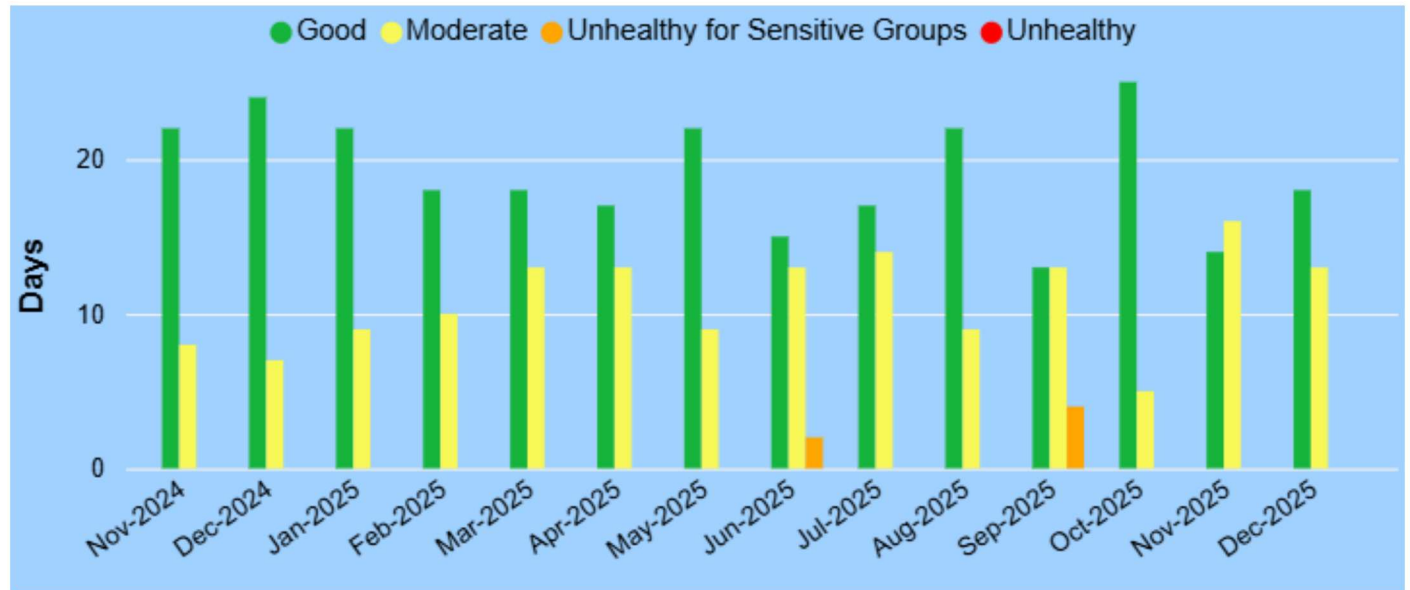


Atlanta Air Quality Index (AQI) Distribution

AQI is calculated using all criteria pollutants. Particulate matter and ozone are the major contributors in Georgia.



Good	Air quality is considered satisfactory, and air pollution poses little or no risk
Moderate	Air quality is acceptable; however, for some pollutants there may be a moderate health concern for a very small number of people who are unusually sensitive to air pollution.
Unhealthy for Sensitive Groups	Members of sensitive groups may experience health effects. The general public is not likely to be affected.
Unhealthy	Everyone may begin to experience health effects; members of sensitive groups may experience more serious health effects.
Very Unhealthy	Health warnings of emergency conditions. The entire population is more likely to be affected.
Hazardous	Health alert: everyone may experience more serious health effects