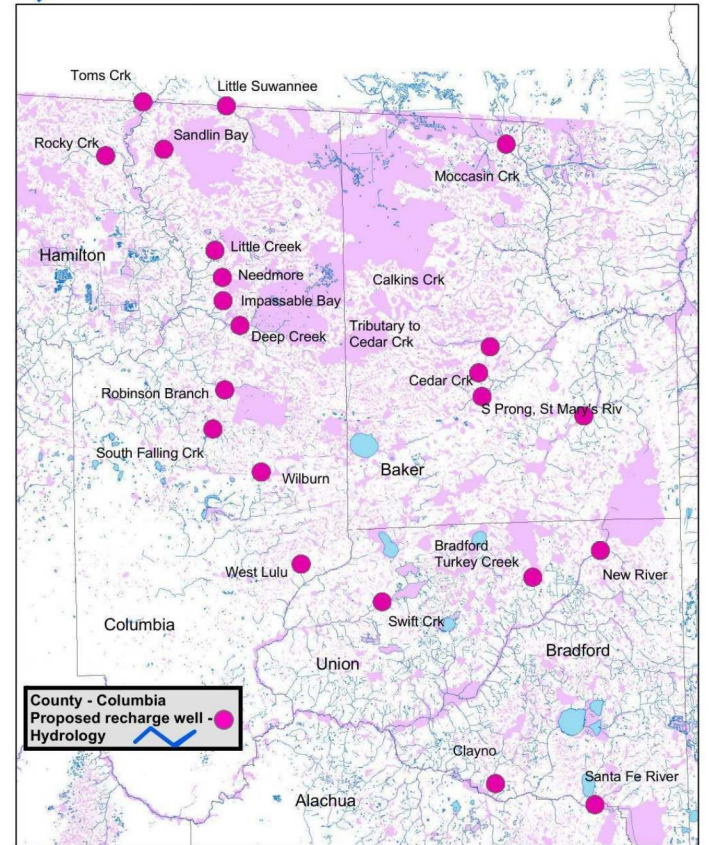


# Wells below forestry ditches: Why not considered?

- Dennis J. Price, P.G. proposed in 2016
- They're at overflow of wetlands below such ditches
- Similar to WFNF wetlands
- How can treated wastewater be cleaner than rainwater?



UPPER FLORIDAN  
RECHARGE PROJECT

0 13,500 54,000  
Feet

Flatwoods recharge wells with names of basins or creeks,  
located upstream of stream entrenchment, at discharge  
from larger basin, upstream of, but on, roads

1:473,689

2026-02-12 [wwals.net](http://wwals.net) 29