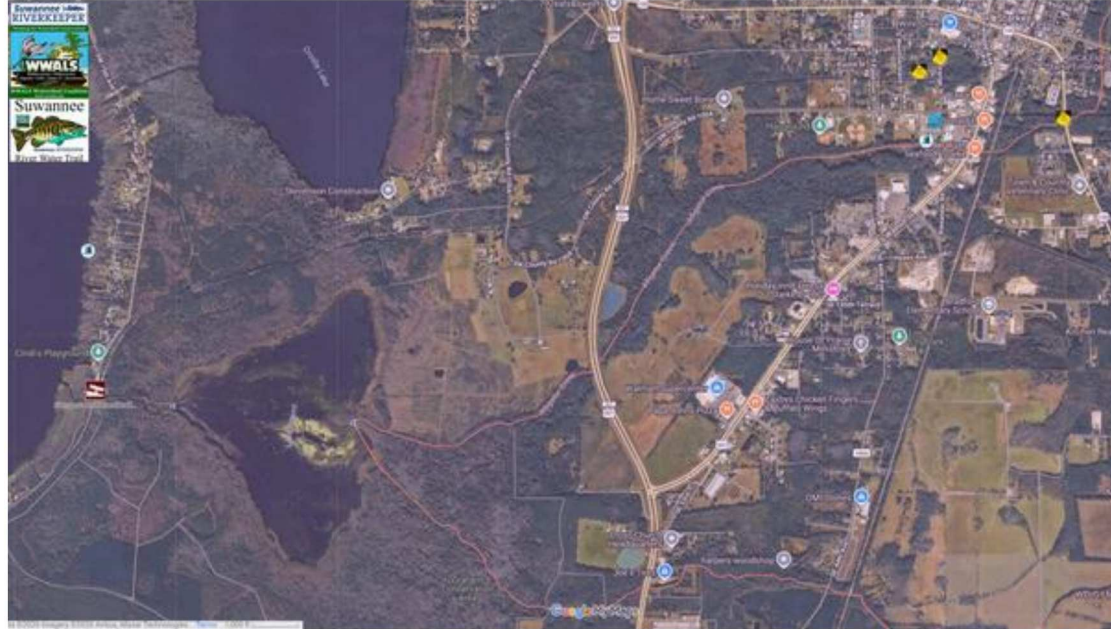


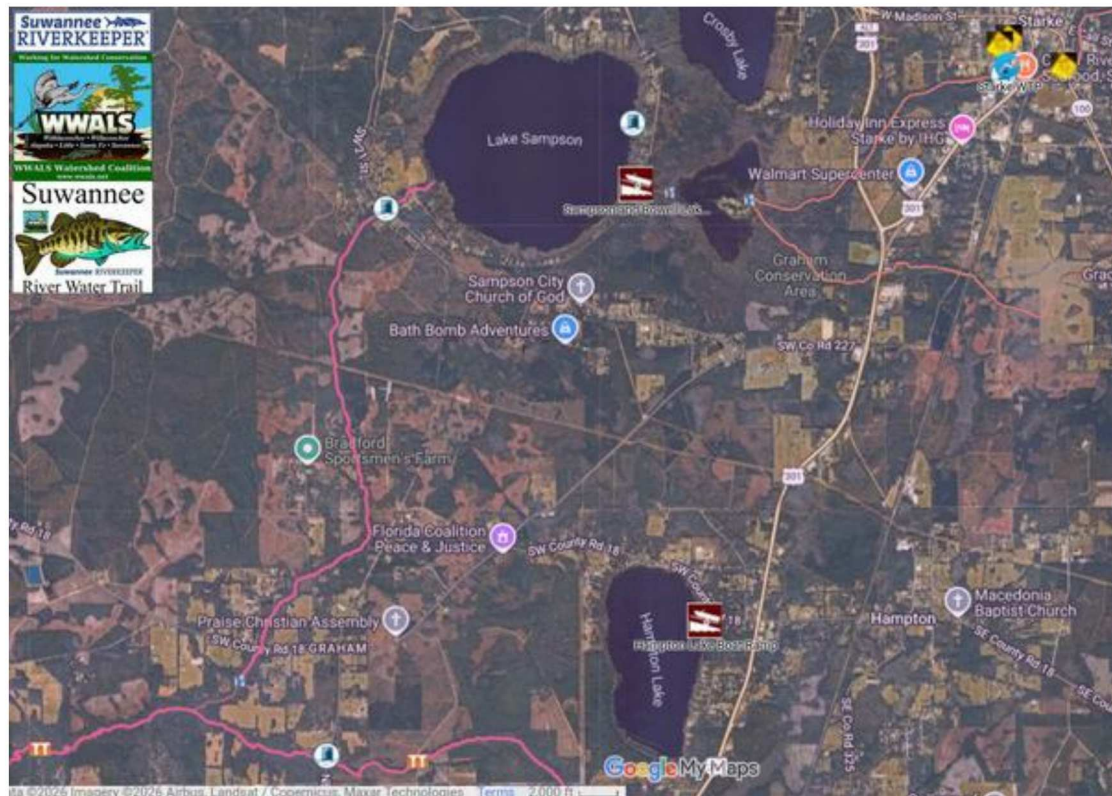
For the rivers and the aquifer,



John S. Quarterman, Suwannee Riverkeeper and Executive Director  
229-560-4317



*Map: Douglas Building just below the 301 marker; between Alligator and Prevatt Creeks. The yellow diamonds by Starke in the upper right mark sewage spill sites.*



*On to Lake Rowell, the canal to Lake Sampson, the Sampson River, the Santa Fe River, and the Suwannee River. Maps by WWALS Watershed Coalition, Inc. (WWALS).*