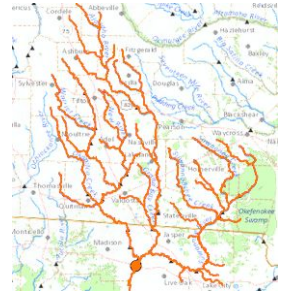


WWALS Watershed Coalition, Inc.
the WATERKEEPER® Alliance Affiliate for the upper
Suwannee, Withlacoochee, and Alapaha Rivers
a 501(c)(3) nonprofit charity
PO Box 88, Hahira, GA 31632
850-290-2350
wwalswatershed@gmail.com
www.wwals.net



July 5, 2016

To: Gainesville Regulatory Office
U.S. Army Corps of Engineers
2833 NW 41st Street, Unit 130
Gainesville, FL 32606
(352) 264-7672

Cc: Tampa Permits Section
U.S. Army Corps of Engineers
10117 Princess Palm Ave Ste 120
Tampa, FL 33610-8302
(813) 769-7073

Jacksonville District Office
U.S. Army Corps of Engineers
P.O. Box 4970
Jacksonville, FL 32232-0019
(904) 232-1177
SAJ-RD@usace.army.mil

Re: Lake City Pipe Yard in jurisdictional wetlands

Dear U.S. Army Corps of Engineers,

It has come to our attention that large quantities of pipe and other construction materials are being stored on a parcel of land that contains wetlands. It appears that at least a portion if not all of the wetlands has been cleared and filled to accommodate the storage of these construction materials. These appear to be U.S. jurisdictional wetlands, so such clearing and filling would appear to be illegal. If in fact this activity is illegal I would like to make a formal complaint and would like to see the materials removed, the wetlands restored and appropriate fines levied.

The location is 30.256148, -82.639781, in Columbia County, Florida, north of Lake City. The Columbia County Property Appraiser lists this parcel 05-3S-17-04849-000 as being owned by ESTRADA EFRAIM & INDIANA, 8612 ROCKLAND DR, JACKSONVILLE, FL 32221-1617. The sign at the highway indicates A-A Auto Parts, 4700 US-441, Lake City, FL 32055.

However, we know of no organization that plans to use that much 36-inch pipe other than Sabal Trail Transmission, LLC. Sabal Trail has not filed this location as a contractor or pipe yard in any of its filings with the Federal Energy Regulatory Commission (FERC) in FERC docket CP15-17, so it would appear Sabal Trail does not have a permit for such storage nor for wetlands disturbance. See Sabal Trail's application to the Corps for permits for various other wetlands, SAJ-2013-03030 (FL), for contact information for Sabal Trail.

Whoever is the owner of the pipe and other materials stored, and whoever is the owner of the parcel, this appears to be a jurisdictional wetlands violation. We have already informed Suwannee River Water Management District, and now we are informing the Corps.

I have appended parcel information and map from the Columbia County Property Appraiser, several aerial photographs taken by WWALS on June 21st 2016, and a LiDAR map by a professional geologist. All the images appear to show wetlands on the affected parcel, some previously continuing under where the pipe is now stored.

Thank you in advance for your attention to this issue. I would appreciate a prompt response.

For the rivers and the aquifer,

[/s]

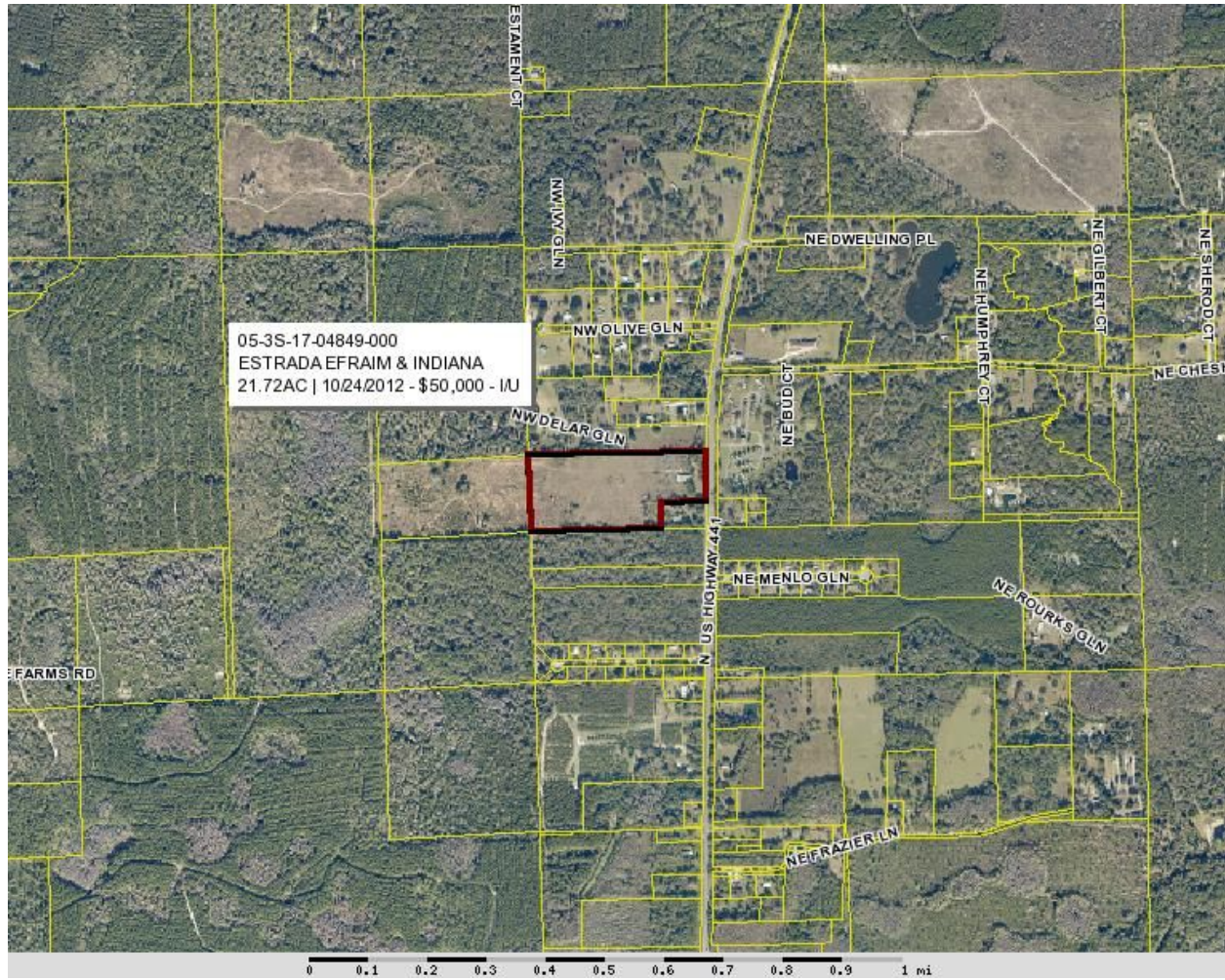
John S. Quarterman, President

WWALS Watershed Coalition advocates for conservation and stewardship
of the Withlacoochee, Willacoochee, Alapaha, Little, and Upper Suwannee River watersheds
in south Georgia and north Florida
through awareness, environmental monitoring, and citizen activities



Columbia County Property Appraiser Map

Parcel 05-3S-17-04849-000



Pipe Yard Location Aerial Photograph (facing south)

Source: John S. Quarterman for WWALS, Southwings flight June 21 2016



Pipe Yard Wetlands Aerial Photograph

Source: Christopher J. Mericle for WWALS, Southwings flight June 21 2016



Pipe Detail Aerial Photograph

Source: John S. Quarterman for WWALS, Southwings flight June 21, 2016



LiDAR Map showing Wetlands in Pipe Yard

Source: SE Environmental Geology, LLC, PO Box 45, White Springs, FL 32096

