

Draft

Total Maximum Daily Load

Evaluation

for

Five Stream Segments

in the

Suwannee River Basin

for

Fecal Coliform

Submitted to:
The U.S. Environmental Protection Agency
Region 4
Atlanta, Georgia

Submitted by:
The Georgia Department of Natural Resources
Environmental Protection Division
Atlanta, Georgia

November 2015

Table of Contents

<u>Section</u>	<u>Page</u>
EXECUTIVE SUMMARY	iv
1.0 INTRODUCTION.....	1
1.1 Background	1
1.2 Watershed Description	1
1.3 Water Quality Standard	2
2.0 WATER QUALITY ASSESSMENT	6
3.0 SOURCE ASSESSMENT	7
3.1 Point Source Assessment.....	7
3.2 Nonpoint Source Assessment	11
4.0 ANALYTICAL APPROACH	17
4.1 Loading Curve Approach.....	17
5.0 TOTAL MAXIMUM DAILY LOADS	20
5.1 Waste Load Allocations	21
5.2 Load Allocations	22
5.3 Seasonal Variation	23
5.4 Margin of Safety	23
5.5 Total Fecal Coliform Load.....	23
6.0 RECOMMENDATIONS	26
6.1 Monitoring	26
6.2 Fecal Coliform Management Practices	26
6.3 Reasonable Assurance	28
6.4 Public Participation	29
7.0 INITIAL TMDL IMPLEMENTATION PLAN	30
7.1 Initial TMDL Implementation Plan	30
7.2 Impaired Segments	30
7.3 Potential Sources	30
7.4 Management Practices and Activities	31
7.5 Monitoring	31
7.6 Future Action	32
REFERENCES	34

List of Tables

1. Stream Segments Listed on the 2014 303(d) List for Fecal Coliform Bacteria in the Suwannee River Basin
2. Suwannee River Basin Land Coverage
3. NPDES Facilities Discharging Fecal Coliform Bacteria into Suwannee River Basin 303(d) Listed Stream Segments
4. Phase II Permitted MS4s in the Suwannee River Basin
5. Percentage of MS4 City or County Urbanized Area Upstream of 303(d) Listed Segments in the Suwannee River Basin
6. Permitted Liquid Manure CAFOs in the Vicinity of 303(d) Listed Segments in the Suwannee River Basin
7. Estimated Agricultural Livestock Populations in the Suwannee River Basin
8. Estimated Number of Septic Systems in the Suwannee River Basin
9. Permitted Land Application Systems in the Vicinity of 303(d) Listed Segments in the Suwannee River Basin
10. Landfills in the Vicinity of 303(d) Listed Segments in the Suwannee River Basin
11. Stream Segments with Estimated Flows and Corresponding USGS Flow Gages
12. WLAs for the Suwannee River Basin
13. Fecal Coliform Loads and Required Fecal Coliform Load Reductions

List of Figures

1. USGS 8-Digit HUCs for Suwannee River Basin
2. Impaired Stream Segment in Suwannee River Basin

List of Appendices

- A: 30-day Geometric Mean Fecal Coliform Monitoring Data
B: Normalized Flows Versus Fecal Coliform Plots

EXECUTIVE SUMMARY

The State of Georgia assesses its waterbodies for compliance with water quality standards criteria established for their designated uses as required by the Federal Clean Water Act (CWA). Assessed waterbodies are placed into one of three categories, supporting designated use, not supporting designated use, or assessment pending, depending on water quality assessment results. These waterbodies are found on Georgia's 305(b) list as required by that section of the CWA that defines the assessment process, and are published in *Water Quality in Georgia* (GA EPD, 2012 – 2013). This document is available on the Georgia Environmental Protection Division (EPD) website.

Some of the 305(b) not supporting waterbodies are also assigned to Georgia's 303(d) list, also named after that section of the CWA. Waterbodies on the 303(d) list are required to have a Total Maximum Daily Load (TMDL) evaluation for the water quality constituent(s) in violation of the water quality standard. The TMDLs in this document are based on the 2014 303(d) listing, which is available on the EPD website. The TMDL process establishes the allowable pollutant loadings or other quantifiable parameters for a waterbody based on the relationship between pollutant sources and instream water quality conditions. This allows water quality-based controls to be developed to reduce pollution and restore and maintain water quality.

Every waterbody in the State has one or more designated uses, and each designated use has water quality criteria established to protect it. The State of Georgia has placed five stream segments in the Suwannee River Basin on the 303(d) list of impaired waters because they were assessed as “not supporting” their designated use of “Fishing” due to violation of the fecal coliform water quality criteria. The water quality criteria for fecal coliform bacteria for a water with a designated use of fishing are as follows: For the months of May through October, when water contact recreation activities are expected to occur, fecal coliform counts are not to exceed a geometric mean of 200 per 100 mL based on at least four samples collected from a given sampling site over a 30-day period at intervals not less than 24 hours. For the months of November through April, fecal coliform counts are not to exceed a geometric mean of 1,000 per 100 mL based on at least four samples collected from a given sampling site over a 30-day period at intervals not less than 24 hours and not to exceed a maximum of 4,000 per 100 mL for any sample. A waterbody is assessed as “not supporting” its use if more than 10% of the geometric means exceeded the water quality criteria cited above. If no geometric means are available, a water is assessed as “not supporting” its use if more than 10 percent of individual samples exceed the fecal coliform criteria.

An important part of the TMDL analysis is the identification of potential source categories. Sources are broadly classified as either point or nonpoint sources. A point source is defined as a discernable, confined, and discrete conveyance from which pollutants are or may be discharged to surface waters. Nonpoint sources are diffuse, and generally, but not always, involve accumulated fecal coliform bacteria that wash off land surfaces as a result of storm events.

The process of developing fecal coliform bacteria TMDLs for listed segments in the Suwannee River Basin includes the determination of the following:

- The current critical fecal coliform load to the stream under existing conditions;
- The TMDL for similar conditions under which the current critical load was determined; and
- The percent reduction in the current critical fecal coliform load necessary to achieve the TMDL.

The calculation of the fecal coliform load at any point in a stream requires the fecal coliform concentration and stream flow. The availability of water quality and flow data varies considerably among the listed segments. The Loading Curve Approach was used to determine the current fecal coliform load and TMDL. The fecal coliform loads and required reductions for each of the listed segments are summarized in the table below.

Management practices that may be used to help reduce fecal coliform source loads include:

- Compliance with National Pollutant Discharge Elimination System (NPDES) permit limits and requirements;
- Adoption of Natural Resources Conservation Service (NRCS) conservation practices; and
- Application of Best Management Practices (BMPs) appropriate to reduce nonpoint sources.

The amount of fecal coliform bacteria delivered to a stream is difficult to determine. However, the use of these management practices should improve stream water quality, and future monitoring will provide a measurement of TMDL implementation.

Fecal Coliform Loads and Required Fecal Coliform Load Reductions

Stream Segment	Current Load (counts/ 30 days)	TMDL Components					Percent Reduction
		WLA (counts/ 30 days)	WLAsw (counts/ 30 days)	LA (counts/ 30 days)	MOS (counts/ 30 days)	TMDL (counts/ 30 days)	
Jumping Gully Creek	4.64E+12	-	2.91E+09	8.12E+11	9.06E+10	9.06E+11	80
Tributary to Withlacoochee River #2	1.05E+12	-	-	2.48E+11	2.76E+10	2.76E+11	74
Willacoochee River	2.62E+14	1.15E+12	-	6.93E+13	7.83E+12	7.83E+13	70
Withlacoochee River, Little River to Okapilco Creek	1.04E+13	1.34E+12	9.43E+09	1.06E+12	2.68E+11	2.68E+12	74
Withlacoochee River, New River to Bay Branch	1.24E+14	1.68E+11	6.51E+10	2.90E+13	3.25E+12	3.25E+13	74

1.0 INTRODUCTION

1.1 Background

The State of Georgia assesses its waterbodies for compliance with water quality standards criteria established for their designated uses as required by the Federal Clean Water Act (CWA). Assessed waterbodies are placed into one of three categories depending on water quality assessment results, supporting designated use, not supporting designated use, or assessment pending. These waterbodies are found on Georgia's 305(b) list as required by that section of the CWA that addresses the assessment process, and are published in *Water Quality in Georgia* (GA EPD, 2012 – 2013). This document is available on the Georgia Environmental Protection Division (EPD) website.

A subset of the waterbodies that do not meet designated uses, those in Category 5 on the 305(b) list, are assigned to Georgia's 303(d) list, named after that section of the CWA. Waterbodies included in the 303(d) list are required to have a Total Maximum Daily Load (TMDL) evaluation for the water quality constituent(s) in violation of the water quality criteria. The TMDLs in this document are based on the 2014 303(d) listing, which is available on the EPD website. The TMDL process establishes the allowable loading of pollutants or other quantifiable parameters for a waterbody based on the relationship between pollution sources and instream water quality conditions. This allows water quality-based controls to be developed to reduce pollution and restore and maintain water quality.

The list identifies the stream segments that are not supporting their designated use classifications due to exceedances of water quality standards for fecal coliform bacteria. Fecal coliform bacteria are used as an indicator of the potential presence of pathogens in a stream. Table 1 presents the five streams in the Suwannee River Basin included on the 2014 303(d) list for exceedances of the fecal coliform standard criteria.

Table 1. Stream Segments Listed on the 2014 303(d) List for Fecal Coliform Bacteria in the Suwannee River Basin

Stream Segment	Location	Reach ID	Segment Length (miles)	Designated Use
Jumping Gully Creek	Bevel Creek to State Line	R031102030903	1	Fishing
Tributary to Withlacoochee River #2	Headwaters to Withlacoochee River	R031102030804	5	Fishing
Willacoochee River	Turkey Branch, upstream SR90/US Hwy 319 N of Ocilla to SR 90, SE of Ocilla	R031102020607	13	Fishing
Withlacoochee River	Little River to Okapilco Creek	R031102030806	9	Fishing
Withlacoochee River	New River to Bay Branch	R031102030403	23	Fishing

1.2 Watershed Description

The Suwannee River Basin is located in south-central Georgia and north-central Florida. The total basin occupies an area of approximately 10,000 square miles with approximately 5,560

square miles of the basin within Georgia. The United States Geologic Survey (USGS) has divided the Suwannee River Basin into six sub-basins, or Hydrologic Unit Codes (HUCs), four of which are located in Georgia. These are numbered as HUCs 03110201 through 03110204. Figure 1 shows the locations of these sub-basins, and Figure 2 shows the sub-basins with impaired stream segments.

The headwaters of the Suwannee River begin in the southeastern portion of Georgia in the Okefenokee National Wildlife Refuge, located south of Waycross. Other major cities in the Suwannee River Basin include Valdosta, Adel, Tifton, Nashville, Fitzgerald, Quitman, Moultrie, Sylvester and Ashburn. The Suwannee River is made up of Little River, Withlacoochee, Willacoochee, and Alapaha Rivers in Georgia and the Santa Fe River in Florida. The Suwannee River flows south through Florida and eventually drains into the Gulf of Mexico through Apalachee Bay.

The land use characteristics of the Suwannee River Basin watersheds were determined using data from the Georgia Land Use Trends (GLUT) for Year 2008. This raster land use trend product was developed by the University of Georgia – Natural Resources Spatial Analysis Laboratory (NARSAL) and follows land use trends for years 1974, 1985, 1991, 1998, 2001, and 2005. The raster data sets were developed from Landsat Thematic Mapper (TM) and Enhanced Thematic Mapper Plus (ETM+). Some of the NARSAL land use types were reclassified, aggregated into similar land use types, and used in the final watershed characterization. Table 2 lists the watershed land use distribution for the drainage areas of the five stream segments.

1.3 Water Quality Standard

The water use classification for the listed stream segments in the Suwannee River Basin is Fishing. The criterion violated is listed as fecal coliform. The potential causes listed include urban runoff, nonpoint sources, and municipal facilities. The use classification water quality standards for fecal coliform bacteria, as stated in the *State of Georgia's Rules and Regulations for Water Quality Control*, Chapter 391-3-6-.03(6)(c)(iii) (GA EPD, 2013), are:

- (c) Fishing: Propagation of Fish, Shellfish, Game and Other Aquatic Life; secondary contact recreation in and on the water; or for any other use requiring water of a lower quality:
 - (iii) Bacteria: For the months of May through October, when water contact recreation activities are expected to occur, fecal coliform not to exceed a geometric mean of 200 per 100 mL based on at least four samples collected from a given sampling site over a 30-day period at intervals not less than 24 hours. Should water quality and sanitary studies show fecal coliform levels from non-human sources exceed 200/100 mL (geometric mean) occasionally, then the allowable geometric mean fecal coliform shall not exceed 300 per 100 mL in lakes and reservoirs and 500 per 100 mL in free flowing freshwater streams. For the months of November through April, fecal coliform not to exceed a geometric mean of 1,000 per 100 mL based on at least four samples collected from a given sampling site over a 30-day period at intervals not less than 24 hours and not to exceed a maximum of 4,000 per 100 mL for any sample. The State does not encourage swimming in surface waters since a number of factors which are beyond the control of any State regulatory agency contribute to elevated levels of fecal coliform. For waters designated as shellfish growing areas by the Georgia DNR Coastal Resources Division, the requirements will be consistent with those established by the State and Federal agencies responsible for the National Shellfish Sanitation Program. The requirements are found in National Shellfish Sanitation Program Guide for the Control of Molluscan Shellfish, 2007 Revision (or most recent version), Interstate Shellfish Sanitation Conference, U.S. Food and Drug Administration.

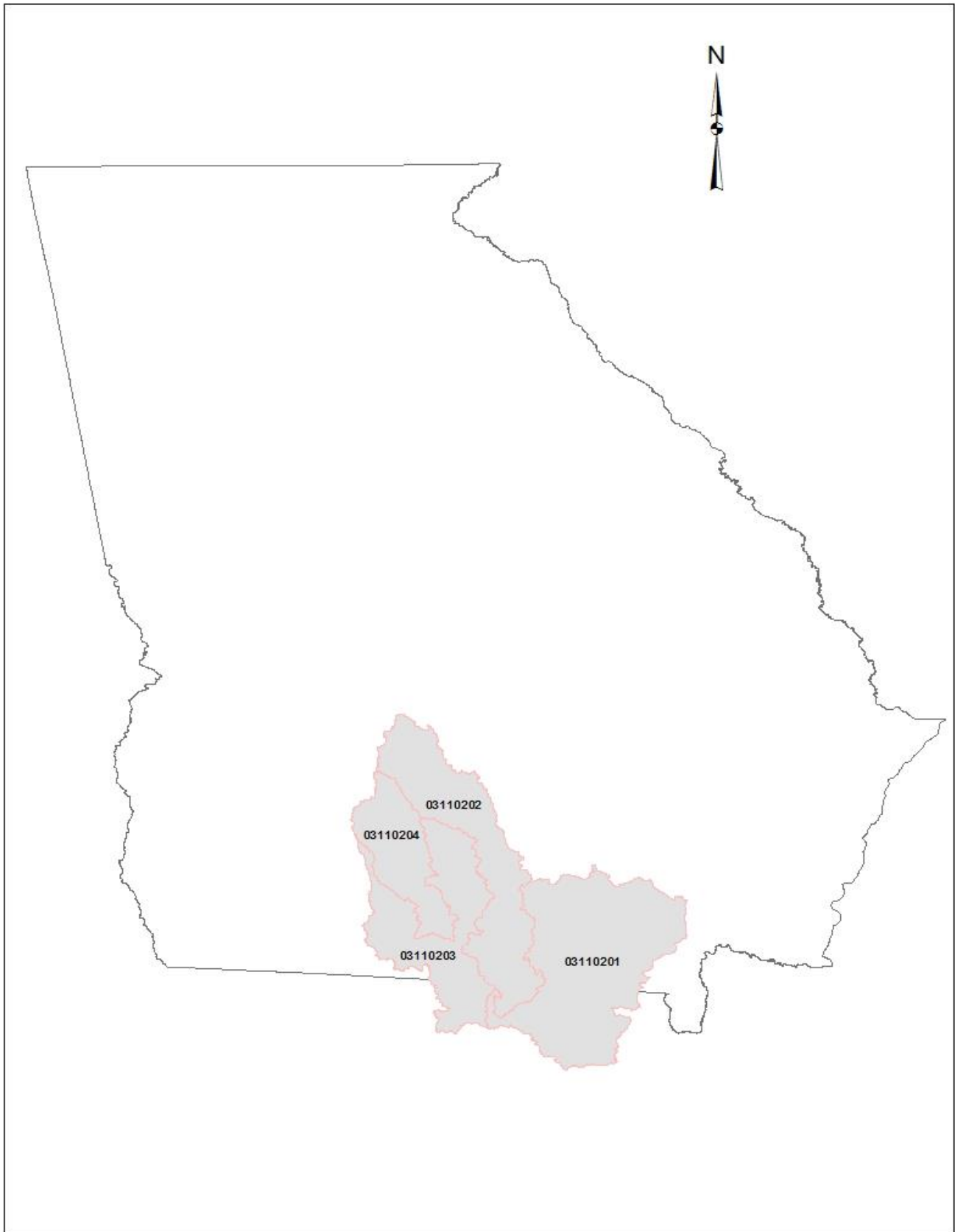


Figure 1. USGS 8-Digit HUCs for Suwannee River Basin

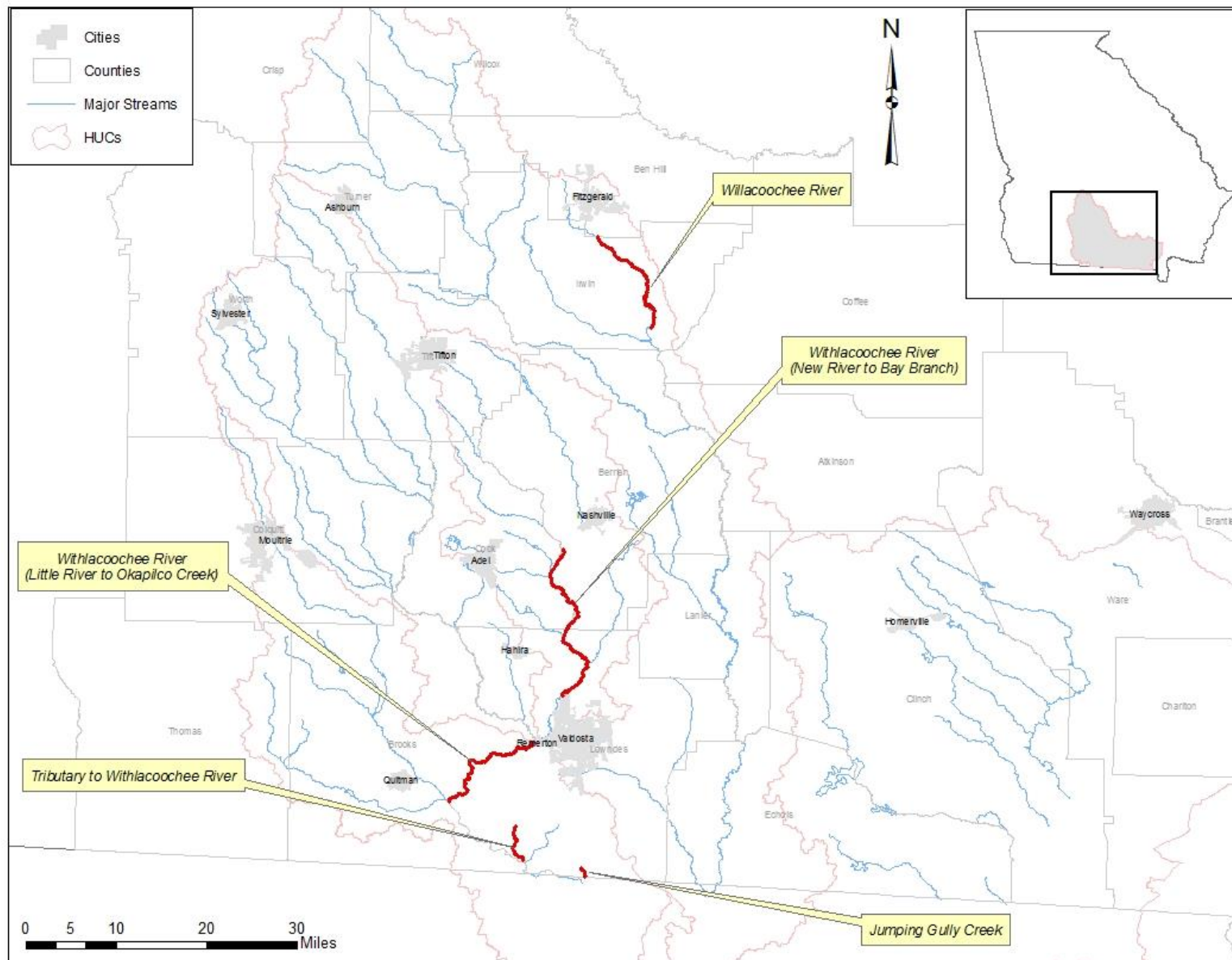


Figure 2. Impaired Stream Segments in Suwannee River Basin

Table 2. Suwannee River Basin Land Coverage

Stream/Segment	Land Use Categories - Acres (Percent)													Total
	Open Water	Low Intensity Residential	High Intensity Residential	High Intensity Commercial, Industrial, Transportation	Bare Rock, Sand, Clay	Quarries, Strip Mines, Gravel Pits	Transitional	Forest	Row Crops	Pasture, Hay	Other Grasses (Urban, recreational; e.g. parks, lawns)	Woody Wetlands	Emergent Herbaceous Wetlands	
Jumping Gully Creek	1,102	671	275	193	48	83	746	8,147	5,235	784	1,498	4,570	113	23,466
	4.7%	2.9%	1.2%	0.8%	0.2%	0.4%	3.2%	34.7%	22.3%	3.3%	6.4%	19.5%	0.5%	100.0%
Tributary to Withlacoochee River #2	24	26	0.4	0	2	0	170	2,528	582	91	225	650	12	4,308
	0.5%	0.6%	0.0%	0.0%	0.0%	0.0%	3.9%	58.7%	13.5%	2.1%	5.2%	15.1%	0.3%	100.0%
Willacoochee River	805	2,242	483	502	264	0	1,182	12,010	24,542	3,219	3,866	8,070	347	57,530
	1.4%	3.9%	0.8%	0.9%	0.5%	0.0%	2.1%	20.9%	42.7%	5.6%	6.7%	14.0%	0.6%	100.0%
Withlacoochee River, Little River to Okapilco Creek	11,748	27,111	6,700	5,088	3,416	41	13,679	293,222	354,388	47,576	49,929	157,012	3,824	973,735
	1.2%	2.8%	0.7%	0.5%	0.4%	0.0%	1.4%	30.1%	36.4%	4.9%	5.1%	16.1%	0.4%	100.0%
Withlacoochee River, New River to Bay Branch	4,023	8,222	1,897	1,415	761	0	4,824	97,826	117,864	13,444	16,111	56,632	1,160	324,178
	1.2%	2.5%	0.6%	0.4%	0.2%	0.0%	1.5%	30.2%	36.4%	4.1%	5.0%	17.5%	0.4%	100.0%

2.0 WATER QUALITY ASSESSMENT

Stream segments are placed on the 303(d) list as not supporting their water use classification based on water quality sampling data. A stream is placed on this list if more than 10% of the calculated geometric means exceed the fecal coliform criteria. If sampling data do not allow for the calculation of 30-day geometric means, a stream is placed on the list if more than 10% of the individual samples exceed the criteria. Water quality samples collected within a 30-day period that have a geometric mean in excess of 200 counts per 100 milliliters during the period May through October, or in excess of 1000 counts per 100 milliliters during the period November through April, are in violation of the bacteria water quality standard. There is also a single sample maximum criterion (4000 counts per 100 milliliters) for the months of November through April.

Fecal coliform data used for TMDLs developed in this document were collected during calendar years 2011 and 2013 by EPD as part of the trend monitoring program. Additional earlier data is also included when available. These data are presented in Appendix A.

3.0 SOURCE ASSESSMENT

An important part of the TMDL analysis is the identification of potential source categories. Sources are broadly classified as either point or nonpoint sources. A point source is defined as a discernable, confined, and discrete conveyance from which pollutants are or may be discharged to surface waters. Nonpoint sources are diffuse, and generally, but not always, involve accumulation of fecal coliform bacteria on land surfaces that wash off as a result of storm events.

3.1 Point Source Assessment

Title IV of the Clean Water Act establishes the National Pollutant Discharge Elimination System (NPDES) permit program. There are two basic kinds of NPDES permits: 1) municipal and industrial wastewater treatment facilities, and 2) regulated stormwater discharges.

3.1.1 Wastewater Treatment Facilities

In general, municipal and industrial wastewater treatment facilities have NPDES permits with effluent limits. These permit limits are either based on federal and state effluent guidelines (technology-based limits) or on water quality standards (water quality-based limits).

The United States Environmental Protection Agency (USEPA) has developed technology-based guidelines, which establish a minimum standard of pollution control for municipal and industrial discharges without regard for the quality of the receiving waters. These are based on Best Practical Control Technology Currently Available (BPT), Best Conventional Control Technology (BCT), and Best Available Technology Economically Achievable (BAT). The level of control required by each facility depends on the type of discharge and the pollutant.

The USEPA and the states have also developed numeric and narrative water quality standards. Typically, these standards are based on the results of aquatic toxicity tests and/or human health criteria and include a margin of safety. Water quality-based effluent limits are set to protect the receiving stream. These limits are based on water quality standards that have been established for a stream based on its intended use and the prescribed biological and chemical conditions that must be met to sustain that use.

Discharges from municipal and industrial wastewater treatment facilities can contribute fecal coliform to receiving waters. There are nine NPDES permitted discharges with flow(s) greater than 0.1 million gallons per day (MGD) identified in the Suwannee River Basin that could potentially impact streams on the 2014 303(d) list for fecal coliform bacteria. Table 3 provides the monthly average discharge flow and fecal coliform concentrations for these facilities. This data was obtained from calendar year 2013 Discharge Monitoring Reports (DMR). The permitted fecal coliform concentrations are also included in this table.

Combined sewer systems convey a mixture of raw sewage and stormwater in the same conveyance structure to the wastewater treatment plant. These are considered a component of municipal wastewater treatment facilities. When the combined sewage exceeds the capacity of the wastewater treatment plant, the excess is diverted to a combined sewage overflow (CSO) discharge point. There are no permitted CSO outfalls in the Suwannee River Basin.

Table 3. NPDES Facilities Discharging Fecal Coliform Bacteria into Suwannee River Basin 303(d) Listed Stream Segments

Facility Name	NPDES Permit No.	Receiving Stream	303(d) Listed Segment	Actual 2013 Discharge		NPDES Permit Limits		Number of FC Violations ^c 2011–2013
				Average Monthly Flow (MGD) ^a	Average Monthly FC (No./100mL) ^b	Average Monthly Flow (MGD)	Average Monthly FC (No./100mL)	
Adel WPCP	GA0024911	Bear Creek	Withlacoochee River	0.44	2	2.5	200	0
Sparks WPCP	GA0021563	Bear Creek	Withlacoochee River	0.34	3	0.5	200	2
Nashville WPCP	GA0039365	Withlacoochee River	Withlacoochee River	0	0	1.0	23	0
Moody AFB	GA0020001	Beatty Branch	Withlacoochee River	0.27	16	0.75	200	0
Ray City Pond	GA0033553	Cat Creek	Withlacoochee River	0.06	4	0.1	200	1
Oak Street Subdivision	GA0030104	Unnamed tributary to Cherry Creek	Withlacoochee River	0.01	2	0.1	200	0
Valdosta - Withlacoochee WPCP	GA0033235	Withlacoochee River	Withlacoochee River	5.48	6	9.5	200	2
Hahira WPCP	GA0037974	Unnamed tributary to Franks Creek	Withlacoochee River	0.2	0	0.275	200	0
Fitzgerald - C. A. Newcomer WPCP	GA0047236	Turkey Branch	Willacoochee River	3.15	73	6.0	200	0

Source: EPD

Notes: ^a Values shown are the annual average of the monthly average flows.

^b Values shown are the annual average of the monthly geometric means.

^c Both monthly and weekly violations included.

3.1.2 Regulated Stormwater Discharges

Some stormwater runoff is covered under the NPDES Permit Program as a point source. Some industrial facilities included under the program will have limits similar to traditional NPDES-permitted dischargers, whereas others establish controls to limit pollution: “to the maximum extent practicable” (MEP). Currently, regulated stormwater discharges that may contain fecal coliform bacteria consist of those associated with industrial activities and large, medium, and small municipal separate storm sewer systems (MS4s) that serve populations of 50,000 or more.

3.1.2.1 Industrial General Stormwater NPDES Permit

Stormwater discharges associated with industrial activities are currently covered under the 2012 General Storm Water NPDES Permit (GAR050000), also called the Industrial General Permit (IGP). This permit requires visual monitoring of stormwater discharges, site inspections, implementation of Best Management Practices (BMPs), and record keeping. The IGP establishes requirements for stormwater discharged to a 305(b)/303(d)-listed stream segment identified as “not supporting” its designated use(s). Stormwater discharging into, or within one linear mile upstream of and within the same watershed as, a listed segment must satisfy the requirements of Appendix C of the 2012 IGP if the pollutant(s) of concern for which the impaired stream segment has been listed may be exposed to stormwater as a result of industrial activity at the site. If a facility is covered under Appendix C of the IGP, then benchmark monitoring for the pollutant(s) of concern is required.

3.1.2.2 MS4 NPDES Permits

Stormwater discharges from MS4s are very diverse in pollutant loadings and frequency of discharge. At present, all cities and counties within the state of Georgia that had a population of greater than 100,000 at the time of the 1990 Census are permitted for their stormwater discharge under Phase I. This includes 58 permittees in Georgia.

Phase I MS4 permits require the prohibition of non-stormwater discharges (i.e., illicit discharges) into the storm sewer systems and controls to reduce the discharge of pollutants to the maximum extent practicable, including the use of management practices, control techniques and systems, as well as design and engineering methods (Federal Register, 1990). A site-specific Stormwater Management Plan (SWMP) outlining appropriate controls is required by and referenced in the permit. There are no Phase I MS4s in the Suwannee River Basin.

Small MS4s serving urbanized areas are required to obtain a stormwater permit under the Phase II stormwater regulations. The urbanized areas are defined by the U.S. Census Bureau. Thirty-five counties, 73 cities, 5 Department of Defense facilities, and the Georgia Department of Transportation (DOT) are permitted under the Phase II regulations in Georgia. In addition to the DOT, which is located in all river basins, there are 3 Phase II MS4s in the Suwannee River Basin (Table 4).

Table 4. Phase II Permitted MS4s in the Suwannee River Basin

Name	Watershed
Hahira	Suwannee
Lowndes County	Suwannee
Valdosta	Suwannee

Source: Nonpoint Source Program, GA EPD, 2014

Table 5 lists the Phase II MS4 city or county urbanized areas upstream of listed segments in the Suwannee River Basin. Urbanized areas include land uses identified as lawns, parks, and greenspace, as well as residential, commercial, industrial, and transportation facilities. The table provides the total area of this watershed and the percentage of the watershed that is a MS4 city or county urbanized area.

Table 5. Percentage of MS4 City or County Urbanized Area Upstream of 303(d) Listed Segments in the Suwannee River Basin

303(d) Listed Stream Segment	Location	Total Area (square miles)	% In MS4 Urbanized Area	MS4 Permittee
Jumping Gully Creek	Bevel Creek to State Line	36.7	0.5%	Valdosta
Withlacoochee River	Little River to Okapilco Creek	1,521.5	1.3%	Hahira, Lowndes County, Valdosta
Withlacoochee River	New River to Bay Branch	506.5	0.3%	Hahira, Lowndes County, Valdosta

3.1.3 Concentrated Animal Feeding Operations

Under the Clean Water Act, Concentrated Animal Feeding Operations (CAFOs) are defined as point sources of pollution and are therefore subject to NPDES permit regulations. From 1999 through 2001, Georgia adopted rules for permitting swine and non-swine liquid manure animal feeding operations (AFOs). Georgia rules required medium size AFOs with more than 300 animal units (AU), but less than 1,000 AU, to apply for a non-discharge State land application system (LAS) waste disposal permit. Large operations with more than 1000 AU were required to apply for an NPDES permit (also non-discharge) as a CAFO. The USEPA CAFO regulations were successfully appealed in 2005. They were revised to comply with the court's decision that NPDES permits only be required for actual discharges. Georgia's rules were amended on August 7, 2012, to reflect the USEPA revisions. The revised state rules will continue LAS permitting of medium size liquid manure AFOs and extend LAS permitting to large liquid manure AFOs with more than 1,000 AU, unless they elect to obtain an NPDES permit. Table 6 presents the swine and non-swine liquid manure CAFOs located in the vicinity of the listed segments in the Suwannee River Basin that have NPDES or land application permits.

Table 6. Permitted Liquid Manure CAFOs in the Vicinity of 303(d) Listed Segments in the Suwannee River Basin

Name	303(d) Listed Stream Segment	County	Animal Type	Total Number of Animals	Permit No.
Danforth Hog Farm	Withlacoochee River	Berrien	Swine	7,000	GAG940029
Drew Smith Dairy	Withlacoochee River	Berrien	Dairy	400	GAG920074
Dairy Research Center	Withlacoochee River	Tift	Dairy	260	GAG920051
Urbana (Moorman) Farm	Withlacoochee River	Tift	Swine	80	GAG920056
Lazy S Dairy	Withlacoochee River	Worth	Dairy	350	GAG920076

Source: GA Dept. of Agriculture, 2014

In 2002, the USEPA promulgated expanded NPDES permit regulations for CAFOs that added dry manure poultry operations larger than 125,000 broilers or 82,000 layers. In accordance with the Georgia rule amendment discussed above, the general permit covering these facilities has been terminated and they are no longer covered under any permit. Georgia is consistently among the top three states in the U.S. in terms of poultry operations. The majority of poultry farms are dry manure operations where the manure is stored for a time and then land applied. Freshly stored litter can be a nonpoint source of fecal coliform. However, land-applied litter that was previously stored for an extended length of time typically exhibits very low fecal coliform levels. There are no known dry manure poultry operations located in the vicinity of the listed segments in the Suwannee River Basin.

3.2 Nonpoint Source Assessment

In general, nonpoint sources cannot be identified as entering a waterbody through a discrete conveyance at a single location. Typical nonpoint sources of fecal coliform bacteria include:

- Wildlife
- Agricultural Livestock
 - Animal grazing
 - Animal access to streams
 - Application of manure to pastureland and cropland
- Urban Development
 - Leaking sanitary sewer lines
 - Leaking septic systems
 - Land Application Systems
 - Landfills

In urban areas, a large portion of stormwater runoff may be collected in storm sewer systems and discharged through distinct outlet structures. For large urban areas, these storm sewer discharge points may be regulated as described in Section 3.1.2.

3.2.1 Wildlife

The significance of wildlife as a source of fecal coliform bacteria in streams varies considerably depending on the animal species present in the watershed. Based on information provided by the Wildlife Resources Division (WRD) of GA DNR, the greatest wildlife sources of fecal coliform are the animals that spend a large portion of their time in or around aquatic habitats. Of these, waterfowl, especially ducks and geese, are considered to be the most significant source, because when present, they are typically found in large numbers on the water surface. Other animals regularly found around aquatic environments include racoons, beavers, muskrats, and to a lesser extent, river otters and minks. Recently, rapidly expanding feral swine populations have become a substantial presence in the floodplain areas of the major rivers in Georgia.

White-tailed deer populations are abundant throughout the Suwannee River Basin. Fecal coliform bacteria contributions to waterbodies from deer are generally considered to be less significant than that of waterfowl, racoons, and beavers. This is because a greater portion of their time is spent in terrestrial habitats. This also holds true for other terrestrial mammals such as squirrels and rabbits, and for terrestrial birds (GA WRD, 2007). However, feces deposited on the land surface can result in the introduction of fecal coliform to streams during runoff events. Between storm events, considerable decomposition of the fecal matter might occur, resulting in a decrease in the associated fecal coliform numbers.

3.2.2 Agricultural Livestock

Agricultural livestock are a potential source of fecal coliform to streams in the Suwannee River Basin. The animals grazing on pastureland deposit their feces onto land surfaces, where it can then be transported during storm events to nearby streams. Animal access to pastureland varies monthly, resulting in varying fecal coliform loading rates throughout the year. Beef cattle spend all of their time in pastures, while dairy cattle and hogs are periodically confined. In addition, agricultural livestock will often have direct access to streams that pass through their pastures, and can thus impact water quality in a more direct manner (USDA, 2002).

Table 7 provides the estimated number of beef cattle, dairy cattle, goats, horses, swine, sheep, and chickens reported by county.

Table 7. Estimated Agricultural Livestock Populations in the Suwannee River Basin

County	Livestock							
	Beef Cattle	Dairy Cattle	Swine	Sheep	Horses	Goats	Chickens Layers	Chickens-Broilers Sold
Atkinson	7,500	-	35	-	125	3,000	-	12,403,200
Ben Hill	3,100	-	100	-	750	1,600	-	3,179,520
Berrien	4,000	500	200	20	225	1,200	-	2,128,896
Brantley	2,500	-	75	-	100	500	920,000	-
Brooks	-	11,500	1,100	75	50	3,100	-	1,996,800
Charlton	1,350	-	80	25	40	330	140,000	-
Clinch	400	-	-	40	45	150	-	-
Coffee	14,100	-	500	100	700	3,500	-	24,733,440

County	Livestock							
	Beef Cattle	Dairy Cattle	Swine	Sheep	Horses	Goats	Chickens Layers	Chickens-Broilers Sold
Colquitt	14,500	500	60	50	100	1,650	-	58,626,480
Cook	2,500	-	-	50	300	700	-	5,322,240
Crisp	3,895	400	-	-	205	1,350	-	2,376,000
Dooly	4,100	250	30	-	40	250	-	6,324,480
Echols	2,100	-	-	-	-	300	-	-
Irwin	6,500	-	-	-	35	3,000	-	1,457,280
Lanier	2,200	-	-	50	75	300	-	-
Lowndes	5,100	-	200	200	180	1,000	-	-
Thomas	4,800	620	70	20	1,200	100	-	485,760
Tift	6,000	340	100	20	25	1,500	-	-
Turner	7,000	-	-	60	100	2,500	-	4,224,000
Ware	2,500	980	-	-	150	800	-	1,029,120
Wilcox	3,500	775	-	15	150	1,100	-	21,127,920
Worth	14,000	950	18	30	250	2,500	-	4,416,000

Source: Center for Agribusiness and Economic Development, 2014

3.2.3 Urban Development

Fecal coliform bacteria from urban areas are attributable to multiple sources, including: domestic animals, leaks and overflows from sanitary sewer systems, illicit discharges, leaking septic systems, runoff from improper disposal of waste materials, and leachate from both operational and closed landfills.

Urban runoff can contain high concentrations of fecal coliform from domestic animals and urban wildlife. Fecal coliform bacteria enter streams by direct washoff from the land surface, or the runoff may be diverted to a stormwater collection system and discharged through a discrete outlet structure. For large, medium, and small urban areas (populations greater than 50,000), the stormwater outlets are regulated under MS4 permits (see Section 3.1.2). For smaller urban areas, the stormwater discharge outlets currently remain unregulated.

In addition to urban animal sources of fecal coliform, there may be illicit connections to the storm sewer system. As part of the MS4 permitting program, municipalities are required to conduct dry-weather monitoring to identify and then eliminate these illicit discharges. Fecal coliform bacteria may also enter streams from leaky sewer pipes, or during storm events when inflow and infiltration can cause sewer overflows.

3.2.3.1 Leaking Septic Systems

A portion of the fecal coliform contributions in the Suwannee River Basin may be attributed to failure of septic systems and illicit discharges of raw sewage. Table 8 presents the number of septic systems in each county of the Suwannee River Basin existing at the end of 2008 and the number existing at the end of 2013. This is based on data provided by the Georgia Department

of Public Health and information obtained from the U.S. Census. In addition, an estimate of the number of septic systems installed and repaired during the period from 2009 through 2013 is given. These data show an increase in the number of septic systems in all of the counties. Often, this is a reflection of population increases outpacing the expansion of sewage collection systems.

Table 8. Estimated Number of Septic Systems in the Suwannee River Basin

County	Existing Septic Systems (2008)	Existing Septic Systems (2013)	Number of Septic Systems Installed (2009 to 2013)	Number of Septic Systems Repaired (2009 to 2013)
Atkinson	2,652	2,794	142	11
Ben Hill	4,930	5,072	142	86
Berrien	5,246	5,450	204	49
Brantley	8,482	8,933	451	169
Brooks	5,696	5,875	179	72
Charlton	3,678	3,832	154	52
Clinch	1,614	1,743	129	16
Coffee	12,811	13,226	415	113
Colquitt	12,525	13,059	534	374
Cook	4,159	4,312	153	71
Crisp	5,468	5,584	116	113
Dooly	2,515	2,584	69	33
Echols	1,330	1,429	99	21
Irwin	2,911	3,023	112	44
Lanier	3,154	3,380	226	29
Lowndes	17,289	17,886	597	252
Thomas	11,949	12,261	312	269
Tift	8,773	8,968	195	127
Turner	2,053	2,121	68	31
Ware	9,526	9,727	201	113
Wilcox	2,356	2,437	81	6
Worth	7,466	7,697	231	211

Source: The Georgia Dept. of Public Health, Environmental Health Section, 2014

3.2.3.2 Land Application Systems

Some communities and industries use land application systems (LAS) for wastewater disposal. These facilities are required through LAS permits to dispose of their treated wastewater by land application, and to operate as non-discharging systems that do not contribute wastewater runoff to surface waters. However, sometimes the soil's percolation rate is exceeded when applying

the wastewater, or encountering excess precipitation, resulting in runoff. This runoff could contribute fecal coliform bacteria to nearby surface waters. Runoff of stormwater might also carry surface residual containing fecal coliform bacteria. There are three permitted LAS systems with a flow greater than 0.1 MGD identified in the Suwannee River Basin that could potentially impact the stream segments in this TMDL (Table 9).

Table 9. Permitted Land Application Systems in the Vicinity of 303(d) Listed Segments in the Suwannee River Basin

Facility Name	303(d) Listed Stream Segment	County	LAS Permit No.	Type	Flow (MGD)
Adel LAS	Withlacoochee River	Cook	GA0024911	Municipal	2.5
Nashville LAS	Withlacoochee River	Berrien	GA0039365	Municipal	0.75
Hahira LAS	Withlacoochee River	Lowndes	GA0037974	Municipal	0.31

3.2.3.3 Landfills

Leachate from landfills may contain fecal coliform bacteria that could at some point reach surface waters. Sanitary (or municipal) landfills are the most likely to serve as a source of fecal coliform bacteria. These types of landfills receive household wastes, animal manure, offal, hatchery and poultry processing plant wastes, dead animals, and other types of wastes. Older sanitary landfills were not lined and most have been closed. Those that remain active and have not been lined operate as construction/demolition landfills. Currently active sanitary landfills are lined and have leachate collection systems. All landfills, excluding inert landfills, are now required to install environmental monitoring systems for groundwater and methane sampling. There are 79 known landfills in the Suwannee River Basin. Of these, 5 are active landfills, 2 are in closure, and 72 are inactive or closed. Table 10 presents the 37 landfills that are in the vicinity of the 303(d) listed stream segments.

Table 10. Landfills in the Vicinity of 303(d) Listed Segments in the Suwannee River Basin

Name	303(d) Listed Segment	County	Permit No.	Status
Tifton - US 82 East - East 2nd Street	Withlacoochee River, New River to Bay Branch	Tift	137-008D(L)	Closed
Tifton - Ferry Lake Rd.		Tift	-	Inactive
Tifton - Tift County US 82 East		Tift	137-001D(SL)	Inactive
Berrien County - SR 547		Berrien	-	Inactive
Berrien County - SR 76W		Berrien	010-004D(SL)	Closed
Berrien County - Brogdon Road		Berrien	010-007D(L)	Closed
Berrien Co. - CR48/CR28 Nashville		Berrien	010-009P(RM)C	Inactive
Berrien County - CR 48/CR 28 PH1		Berrien	010-008D(L)	Closed
Nashville		Berrien	-	Inactive
Ray City Landfill		Berrien	010-003D(L)	Inactive

Name	303(d) Listed Segment	County	Permit No.	Status
Lenox		Cook	-	Inactive
Sparks		Cook	-	Inactive
Cook County		Cook	-	Inactive
Cecil		Cook	-	Inactive
Old Ashburn Dump	Withlacoochee River, Little River to Okapilco Creek	Turner	-	Inactive
Sycamore		Turner	-	Inactive
SR 112 Sylvester PH1		Worth	159-004D(SL)	Closed
Tifton - Maple Street		Tift	137-014D(L)	Closed
Tifton - Omega - Eldorado Road PH 1		Tift	137-007D(SL)	Closed
Tift County - Omega - Eldorado Rd.		Tift	137-013P(INC)	Inactive
Norman Park		Colquitt	-	Inactive
Omega		Colquitt	-	Inactive
Crosland		Colquitt	-	Inactive
Industrial Park		Colquitt	-	Inactive
Cool Springs		Colquitt	-	Inactive
Ellenton		Colquitt	-	Inactive
Adel - Cook County		Cook	-	Inactive
Cook County - CR 216 Construction		Cook	037-011D(C&D)	Operating
Cook County - Taylor Road PH1		Cook	037-006D(SL)	Closed
Morven		Brooks	-	Inactive
Hahira - Friendship Church Road		Lowndes	092-003D(SL)	Closed
Hahira		Lowndes	-	Inactive
Pecan Row MSWL		Lowndes	092-019D(MSWL)	In Closure
Valdosta - SR 94		Lowndes	092-001D(SL)	Closed
Veolia E.S. Evergreen MSWL		Lowndes	092-022D(MSWL)	Operating
Valdosta - Wetherington Lane		Lowndes	092-014D(SL)	Closed
Fitzgerald	Willacoochee River	Ben Hill	-	Inactive

Source: Land Protection Branch, GA DNR, 2014

4.0 ANALYTICAL APPROACH

The process of developing fecal coliform TMDLs for the Suwannee River Basin listed segments includes the determination of the following:

- The current critical fecal coliform load to the stream under existing conditions;
- The TMDL for similar conditions under which the current load was determined; and
- The percent reduction in the current critical fecal coliform load necessary to achieve the TMDL.

The calculation of the fecal coliform load at any point in a stream requires the fecal coliform concentration and stream flow. The Loading Curve Approach was used to determine the current fecal coliform load and the TMDL. For the listed segments, fecal coliform sampling data were sufficient to calculate at least one 30-day geometric mean to compare with the regulatory criteria (see Appendix A).

4.1 Loading Curve Approach

For those segments in which sufficient water quality data were collected to calculate at least one 30-day geometric mean that was above the regulatory standard, the loading curve approach was used. This method involves comparing the current critical load to summer and winter seasonal TMDL curves.

The available field measurements and water quality data used to develop the TMDLs for this document did not include stream flow data. Therefore, stream flows for these sites were estimated using data from a nearby USGS gaged stream. The nearby stream had relatively similar watershed characteristics, including landuse, slope, and drainage area. The stream flows were estimated by multiplying the gaged flow by the ratio of the listed stream drainage area to the gaged stream drainage area. Table 11 provides the USGS stream gages used to estimate the flows for each of the listed stream segments.

Table 11. Stream Segments with Estimated Flows and Corresponding USGS Flow Gages

Name	Location	Station No.	USGS Station Name	Drainage Area (sq mile)
Jumping Gully Creek	Bevel Creek to State Line	02318700	Okapilco Creek at GA 133, near Quitman, GA (2013)	269.0
Tributary to Withlacoochee River #2	Headwaters to Withlacoochee River	02318700	Okapilco Creek at GA 133 near Quitman, GA (2013)	269.0
Willacoochee River	Turkey Branch, upstream SR90/US Hwy 319 N of Ocilla to SR 90, SE of Ocilla	02318700	Okapilco Creek at GA 133 near Quitman, GA (2013)	269.0
		02315920	Alapaha River at GA 125/32 near Irwinville, GA (2013)	430.0
Withlacoochee River	Little River to Okapilco Creek	02318500	Withlacoochee River at US 84 near Quitman, GA (2011)	1480.0
		02317755	Withlacoochee River at US 41 near Valdosta, GA (2011)	537.0

Name	Location	Station No.	USGS Station Name	Drainage Area (sq mile)
Withlacoochee River	New River to Bay Branch	023177483	Withlacoochee River at McMillan Road near Bemiss, GA (2013)	502.0
		02317755	Withlacoochee River at US 41 near Valdosta, GA (2013)	537.0

The current critical loads were determined using fecal coliform data collected within a 30-day period to calculate the geometric means, and multiplying these values by the arithmetic means of the flows measured at the time the water quality samples were collected. Georgia's instream fecal coliform standards are based on a geometric mean of samples collected over a 30-day period, with samples collected at least 24 hours apart. To reflect this in the load calculation, the fecal coliform loads are expressed as 30-day accumulated loads with units of counts per 30 days. This is described by the equation below:

$$L_{\text{critical}} = C_{\text{geomean}} \times Q_{\text{mean}}$$

Where:

- L_{critical} = current critical fecal coliform load
- C_{geomean} = fecal coliform concentration as a 30-day geometric mean
- Q_{mean} = stream flow as an arithmetic mean

The current estimated critical load is dependent on the fecal coliform concentrations and stream flows measured during the sampling events. The number of events sampled is usually 16 per year. Thus, these loads do not represent the full range of flow conditions or loading rates that can occur. Therefore, it must be kept in mind that the current critical loads used only represent the worst-case scenario that occurred during the sampling period.

The maximum fecal coliform load at which the instream fecal coliform criteria will be met can be determined using a variation of the equation above. By setting C equal to the seasonal, instream fecal coliform standard, the load will equal the TMDL. However, the TMDL is dependent on stream flow. Figures in Appendix A graphically illustrate that the TMDL is a continuum for the range of flows (Q) that can occur in the stream over time. There are two TMDL curves shown in these figures. One represents the summer TMDL for the period May through October when the 30-day geometric mean standard is 200 counts/100 mL. The second curve represents the winter TMDL for the period November through April when the 30-day geometric mean standard is 1,000 counts/100 mL. The equations for these two TMDL curves are:

$$\text{TMDL}_{\text{summer}} = 200 \text{ counts (as a 30-day geometric mean)/100 mL} \times Q$$

$$\text{TMDL}_{\text{winter}} = 1,000 \text{ counts (as a 30-day geometric mean)/100 mL} \times Q$$

The graphs show the relationship between the current critical load (L_{critical}) and the TMDL. The TMDL for a given stream segment is the load for the mean flow corresponding to the current critical load. This is the point where the current load exceeds the TMDL curve by the greatest amount. This critical TMDL can be represented by the following equation:

$$\text{TMDL}_{\text{critical}} = C_{\text{standard}} \times Q_{\text{mean}}$$

Where:

$$\begin{aligned} \text{TMDL}_{\text{critical}} &= \text{critical fecal coliform TMDL load} \\ \text{C}_{\text{standard}} &= \text{seasonal fecal coliform standard (as a 30-day geometric mean)} \\ &\quad \text{summer - 200 counts/100 mL} \\ &\quad \text{winter - 1,000 counts/ 100 mL} \\ \text{Q}_{\text{mean}} &= \text{stream flow as an arithmetic mean} \end{aligned}$$

A 30-day geometric mean load that plots above the respective seasonal TMDL curve represents an exceedance of the instream fecal coliform standard. The difference between the current critical load and the TMDL curve represents the load reduction required for the stream segment to meet the appropriate instream fecal coliform standard. There is also a single sample maximum criterion (4,000 counts per 100 milliliters) for the months of November through April. If a single sample exceeds the maximum criterion, and the seasonal geometric mean criteria is also exceeded, then the TMDL is based on the criteria exceedance requiring the largest load reduction. The percent load reduction can be expressed as follows:

$$\text{Percent Load Reduction} = \frac{\text{L}_{\text{critical}} - \text{TMDL}_{\text{critical}}}{\text{L}_{\text{critical}}} \times 100$$

5.0 TOTAL MAXIMUM DAILY LOAD

A Total Maximum Daily Load (TMDL) is the amount of a pollutant that can be assimilated by the receiving waterbody without exceeding the applicable water quality standard. In this case it is the seasonal fecal coliform bacteria standard. A TMDL is the sum of the individual waste load allocations (WLAs) for point sources and load allocations (LAs) for nonpoint sources, as well as natural background (40 CFR 130.2) for a given waterbody. The TMDL must also include a margin of safety (MOS), either implicitly or explicitly, that accounts for the uncertainty in the relationship between pollutant loads and the water quality response of the receiving waterbody. TMDLs can be expressed in terms of either mass per time, toxicity, or other appropriate measures. For fecal coliform bacteria, the TMDLs are expressed as counts per 30 days as a geometric mean.

A TMDL is expressed as follows:

$$\text{TMDL} = \Sigma \text{WLAs} + \Sigma \text{LAs} + \text{MOS}$$

The TMDL calculates the WLAs and LAs with a margin of safety to meet the stream's water quality standards. The allocations are based on estimates that use the best available data and provide the basis to establish or modify existing controls so that water quality standards can be achieved. In developing a TMDL, it is important to consider whether adequate data are available to identify the sources, and to understand the fate and transport of the pollutant(s) to be controlled.

TMDLs may be developed using a phased approach. Under a phased approach, the TMDL includes: 1) WLAs that confirm existing limits and controls or lead to new limits, and 2) LAs that confirm existing controls or include implementing new controls (USEPA, 1991). A phased TMDL requires additional data be collected to determine if load reductions required by the TMDL are leading to the attainment of water quality standards.

Watershed-based plans may be developed to address and assess both point and nonpoint sources. These plans establish a schedule or timetable for the installation and evaluation of source control measures, data collection, and assessment of water quality standard attainment. Future monitoring of the listed segment water quality may be used to evaluate this phase of the TMDL, and if necessary, to reallocate the loads.

The fecal coliform loads calculated for each listed stream segment include the sum of the total loads from all point and nonpoint sources for the segment. The load contributions to the listed segment from unlisted upstream segments are represented in the background loads, unless the unlisted segment contains point sources that had permit violations for fecal coliform. In these cases, the upstream point sources are included in the wasteload allocations for the listed segment. In situations where two or more adjacent segments are listed, the fecal coliform loads to each segment are individually evaluated on a localized watershed basis. Point source loads originating in upstream segments are included in the background loads of the downstream segment. The following sections describe the various fecal coliform TMDL components.

5.1 Waste Load Allocations

5.1.1 Wastewater Treatment Facilities

The waste load allocation (WLA) is the portion of the receiving water's loading capacity that is allocated to existing or future point sources. WLAs are provided to the point sources with flows greater than 0.1 MGD from municipal and industrial wastewater treatment systems with NPDES effluent limits for fecal coliform bacteria. There are nine of these facilities in the Suwannee River Basin watershed that discharge into or within 25 miles upstream of listed segments. The maximum allocated fecal coliform loads for these wastewater treatment facilities are given in Table 12. These WLA loads were calculated from the permitted flows and permitted fecal coliform concentrations. These were expressed as an accumulated load over a 30-day period, and presented in units of counts per 30 days. If a facility expands its capacity and the permitted flow increases, the wasteload allocation for the facility would increase in proportion to the flow.

Table 12. WLAs for the Suwannee River Basin

Facility Name	Permit No.	Receiving Stream	Listed Stream Segment	WLA (counts/30 days)
Adel WPCP	GA0024911	Bear Creek	Withlacoochee River	5.68E+11
Sparks WPCP	GA0021563	Bear Creek	Withlacoochee River	1.14E+11
Nashville WPCP	GA0039365	Withlacoochee River	Withlacoochee River	2.61E+10
Moody AFB	GA0020001	Beatty Branch	Withlacoochee River	1.70E+11
Ray City Pond	GA0033553	Cat Creek	Withlacoochee River	2.27E+10
Oak Street Subdivision	GA0030104	Unnamed tributary to Cherry Creek	Withlacoochee River	2.27E+10
Valdosta - Withlacoochee WPCP	GA0033235	Withlacoochee River	Withlacoochee River	1.82E+12
Hahira WPCP	GA0037974	Unnamed tributary to Franks Creek	Withlacoochee River	6.25E+10
Fitzgerald - C. A. Newcomer WPCP	GA0047236	Turkey Branch	Willacoochee River	1.36E+12

5.1.2 Regulated Stormwater Discharges

State and Federal Rules define stormwater discharges covered by NPDES permits as point sources. However, stormwater discharges are from diffuse sources and there are multiple stormwater outfalls. Stormwater sources (point and nonpoint) are different than traditional NPDES permitted sources in four respects: 1) they do not produce a continuous (pollutant loading) discharge; 2) their pollutant loading depends on the intensity, duration, and frequency

of rainfall events, over which the permittee has no control; 3) the activities contributing to the pollutant loading may include the various allowable activities of others, and control of these activities is not solely within the discretion of the permittee; and 4) they do not have wastewater treatment plants that control specific pollutants to meet numerical limits.

The intent of stormwater NPDES permits is not to treat the water after collection, but to reduce the exposure of stormwater to pollutants by implementing various controls. It would be infeasible and prohibitively expensive to control pollutant discharges from each stormwater outfall. Therefore, stormwater NPDES permits require the establishment of controls or BMPs to reduce the pollutants entering the environment.

The waste load allocations from stormwater discharges associated with MS4s (WLA_{sw}) are estimated based on the percentage of urban area in each watershed covered by the MS4 stormwater permit. At this time, the portion of each watershed that goes directly to a permitted storm sewer and that which goes through non-permitted point sources, or is sheet flow or agricultural runoff, has not been clearly defined. Thus, it is assumed that approximately 70 percent of stormwater runoff from the regulated urban area is collected by the municipal separate storm sewer systems.

5.1.3 Confined Animal Feeding Operations

Wet and dry manure CAFOs are located within the Suwannee River Basin (see Section 3.1.3). Wet manure facilities are either included under an LAS General Permit or an NPDES General Permit. A small number of wet manure operations have an individual NPDES permit. Dry manure facilities are not required to obtain permits. Presently no CAFOs discharge wastewater, and therefore, they were not provided a WLA.

5.2 Load Allocations

The load allocation is the portion of the receiving water's loading capacity that is attributed to existing or future nonpoint sources or to natural background sources. Nonpoint sources are identified in 40 CFR 130.6 as follows:

- Residual waste;
- Land disposal;
- Agricultural and silvicultural;
- Mines;
- Construction;
- Saltwater intrusion; and
- Urban stormwater (non-permitted).

The LA is calculated as the remaining portion of the TMDL load available, after allocating the WLA, WLA_{sw}, and the MOS, using the following equation:

$$LA = TMDL - (\Sigma WLA + \Sigma WLA_{sw} + MOS)$$

As described above, there are two types of load allocations: loads to the stream independent of precipitation, including sources such as failing septic systems, leachate from landfills, animals in the stream, leaking sewer system collection lines, and background loads; and loads associated with fecal coliform accumulation on land surfaces that is washed off during storm events, including runoff from saturated LAS fields. At this time, it is not possible to partition the various sources of load

allocations. Table 13 presents the total load allocation expressed as counts per 30 days for the 303(d) listed streams located in the Suwannee River Basin for the current critical condition. In the future, after additional data has been collected, it may be possible to partition the load allocation by source.

5.3 Seasonal Variation

The Georgia fecal coliform criteria are seasonal. One set of criteria applies to the summer season, while a different set applies to the winter season. To account for seasonal variations, the critical loads for each listed segment were determined from sampling data obtained during both summer and winter seasons, when possible. The TMDL and percent reduction given in Table 13 for each listed segment was based on the season in which the critical load occurred. The TMDLs for each season, for any given flow, are presented as equations in Section 5.5.

Analyses of the available fecal coliform data and corresponding flows were performed to determine if the fecal coliform violations occurred during wet weather (high flow) or dry weather (low flow) conditions. The flow data from each sampling site were normalized by dividing the measured flow by the product of the average annual runoff (cfs/sq mile), published in Open-File Report 82-577 (Carter, 1982), and the appropriate drainage area. Plots of the normalized flows (Q/Q_o) versus fecal coliform are shown in Appendix B. The plots do not show a consistent relationship between fecal coliform concentrations and flow. The summer and winter plots show that the fecal coliform violations occur during both high (wet weather) and low (dry weather) flow conditions.

5.4 Margin of Safety

The MOS is a required component of TMDL development. There are two basic methods for incorporating the MOS: 1) implicitly incorporate the MOS using conservative modeling assumptions to develop allocations; or 2) explicitly specify a portion of the TMDL as the MOS and use the remainder for allocations. For this TMDL, an explicit MOS of 10 percent of the TMDL was used. The MOS values are presented in Table 13.

5.5 Total Fecal Coliform Load

The fecal coliform TMDL for the listed stream segment is dependent on the time of year, the stream flow, and the applicable state water quality standard.

The total maximum daily seasonal fecal coliform loads for Georgia are given below:

$$\text{TMDL}_{\text{summer}} = 200 \text{ counts (as a 30-day geometric mean)/100 mL} \times Q$$

$$\text{TMDL}_{\text{winter}} = 1,000 \text{ counts (as a 30-day geometric mean)/100 mL} \times Q$$

$$\text{TMDL}_{\text{winter}} = 4,000 \text{ counts (instantaneous)/100 mL} \times Q$$

For purposes of determining necessary load reductions required to meet the instream water quality criteria, the current critical TMDL was determined. This load is the product of the applicable seasonal fecal coliform standard and the mean flow used to calculate the current critical load. It represents the sum of the allocated loads from point (WLA and WLA_{sw}) and nonpoint (LA) sources located within the immediate drainage area of the listed segment, the NPDES-permitted point discharges with recorded fecal coliform violations from the nearest upstream subwatersheds, and a margin of safety (MOS). For these calculations, the fecal load

contributed by the permitted facility to the WLA was not the maximum presented in Table 12, but rather was the product of the fecal coliform permitted limit and the average monthly discharge at the time of the critical load. The current critical loads and corresponding TMDLs, WLAs (WLA and WLA_{sw}), LAs, MOSs, and percent load reductions for the Suwannee River Basin listed stream segments are presented in Table 13.

The relationships of the current critical loads to the TMDLs are shown graphically in Appendix A. The vertical distance between the two values represents the load reductions necessary to achieve the TMDLs. As a consequence of the localized nature of the load evaluations, the calculated fecal coliform load reductions pertain to point and nonpoint sources occurring within the immediate drainage area of the listed segment. These current critical values represent a worst-case scenario for the limited set of data. Thus, the load reductions required are conservative estimates, and should be sufficient to prevent exceedances of the instream fecal coliform standard for a wide range of conditions.

Evaluation of the relationship between instream water quality and the potential sources of pollutant loading is an important component of TMDL development, and is the basis for later implementation of corrective measures and BMPs. For the current TMDLs, the association between fecal coliform loads and the potential sources occurring within the subwatersheds of each segment was examined on a qualitative basis.

Table 13. Fecal Coliform Loads and Required Fecal Coliform Load Reductions

Stream Segment	Current Load (counts/ 30 days)	TMDL Components					Percent Reduction
		WLA (counts/ 30 days) ¹	WLASw (counts/ 30 days)	LA (counts/ 30 days)	MOS (counts/ 30 days)	TMDL (counts/ 30 days)	
Jumping Gully Creek	4.64E+12	-	2.91E+09	8.12E+11	9.06E+10	9.06E+11	80
Tributary to Withlacoochee River #2	1.05E+12	-	-	2.48E+11	2.76E+10	2.76E+11	74
Willacoochee River	2.62E+14	1.15E+12	-	6.93E+13	7.83E+12	7.83E+13	70
Withlacoochee River, Little River to Okapilco Creek	1.04E+13	1.34E+12	9.43E+09	1.06E+12	2.68E+11	2.68E+12	74
Withlacoochee River, New River to Bay Branch	1.24E+14	1.68E+11	6.51E+10	2.90E+13	3.25E+12	3.25E+13	74

Notes: ¹ The assigned fecal coliform load from each NPDES permitted facility for WLA was determined as the product of the fecal coliform permit limit and the facility average monthly discharge at the time of the critical load.

6.0 RECOMMENDATIONS

The TMDL process consists of an evaluation of the subwatersheds for each 303(d) listed stream segment to identify, as best as possible, the sources of the fecal coliform loads causing the stream to exceed instream standards. The TMDL analysis was performed using the best available data to specify WLAs and LAs that will meet fecal coliform water quality criteria so as to support the use classification specified for each listed segment.

This TMDL represents part of a long-term process to reduce fecal coliform loading to meet water quality standards in the Suwannee River Basin. Implementation strategies will be reviewed and the TMDLs will be refined as necessary in the next phase (next five-year cycle). The phased approach will support progress toward water quality standards attainment in the future. In accordance with USEPA TMDL guidance, these TMDLs may be revised based on the results of future monitoring and source characterization data efforts. The following recommendations emphasize further source identification and involve the collection of data to support the current allocations and subsequent source reductions.

6.1 Monitoring

Water quality monitoring is conducted at a number of locations across the State each year. Sampling is conducted statewide by EPD personnel in Atlanta, Brunswick, Cartersville, and Tifton. Additional monitoring sites are added as necessary.

In the case where a watershed-based plan has been developed for a listed stream segment, an appropriate water quality monitoring program will be outlined. The monitoring program will be developed to help identify the various fecal coliform sources. The monitoring program may be used to verify the 303(d) stream segment listings. This will be especially valuable for those segments where limited data resulted in the listing.

6.2 Fecal Coliform Management Practices

Based on the findings of the source assessment, NPDES point source fecal coliform loads from wastewater treatment facilities usually do not significantly contribute to the impairment of the listed stream segments. This is because most facilities are required to treat to levels corresponding to instream water quality criteria. Sources of fecal coliform in urban areas include wastes that are attributable to domestic animals, leaks and overflows from sanitary sewer systems, illicit discharges of sanitary waste, leaking septic systems, runoff from improper disposal of waste materials, and leachate from both operational and closed landfills. In agricultural areas, potential sources of fecal coliform may include CAFOs, animals grazing in pastures, dry manure storage facilities and lagoons, chicken litter storage areas, and direct access of livestock to streams. Wildlife, especially waterfowl can be a significant source of fecal coliform bacteria.

Management practices are recommended to reduce fecal coliform source loads to the listed 303(d) stream segments, with the result of achieving the instream fecal coliform standard criteria. These recommended management practices include:

- Compliance with NPDES permit limits and requirements;
- Adoption of NRCS Conservation Practices; and
- Application of Best Management Practices (BMPs) appropriate to agricultural or urban land uses, where applicable.

6.2.1 Point Source Approaches

Point sources are defined as discharges of treated wastewater or stormwater into rivers and streams at discrete locations. The NPDES permit program provides a basis for municipal, industrial, and stormwater permits, monitoring and compliance with limitations, and appropriate enforcement actions for violations.

In accordance with EPD rules and regulations, all discharges from point source facilities are required to be in compliance with the conditions of their NPDES permit at all times. Municipal and industrial wastewater treatment facilities with the potential for fecal coliform in their discharge are given end-of-pipe limits to meet the applicable water quality standard. An exception is constructed wetland systems, which have a natural level of fecal coliform input from animals attracted to the artificial wetlands. In addition, the permits include routine monitoring and reporting requirements.

6.2.2 Nonpoint Source Approaches

EPD is responsible for administering and enforcing laws to protect the waters of the State. EPD is the lead agency for implementing the State's Nonpoint Source Management Program. Regulatory responsibilities that have a bearing on nonpoint source pollution include establishing water quality standards and use classifications, assessing and reporting water quality conditions, and regulating land use activities that may affect water quality. Georgia is working with local governments, agricultural and forestry agencies such as the Natural Resources Conservation Service, the Georgia Soil and Water Conservation Commission, and the Georgia Forestry Commission, to foster the implementation of BMPs to address nonpoint source pollution. In addition, public education efforts are being targeted to individual stakeholders to provide information regarding the use of BMPs to protect water quality. The following sections describe, in more detail, recommendations to reduce nonpoint source loads of fecal coliform bacteria in Georgia's surface waters.

6.2.2.1 Agricultural Sources

EPD should coordinate with other agencies that are responsible for agricultural activities in the state to address issues concerning fecal coliform loading from agricultural lands. It is recommended that information such as livestock populations by subwatershed, animal access to streams, manure storage and application practices be periodically reviewed so that watershed evaluations can be updated to reflect current conditions. It is also recommended that BMPs be utilized to reduce the amount of fecal coliform bacteria transported to surface waters from agricultural sources to the maximum extent practicable.

The following three organizations have primary responsibility for working with farmers to promote soil and water conservation, and to protect water quality:

- University of Georgia (UGA) - Cooperative Extension Service;
- Georgia Soil and Water Conservation Commission (GSWCC); and
- Natural Resources Conservation Service (NRCS).

UGA has faculty, County Cooperative Extension Agents, and technical specialists who provide services in several key areas relating to agricultural impacts on water quality.

EPD designated the GSWCC as the lead agency for agricultural Nonpoint Source Management in the State. The GSWCC develops nonpoint source management programs and conducts

educational activities to promote conservation and protection of land and water devoted to agricultural uses.

The NRCS works with federal, state, and local governments to provide financial and technical assistance to farmers. The NRCS develops standards and specifications for BMPs that are to be used to improve, protect, and/or maintain our state's natural resources. In addition, every five years, the NRCS conducts the National Resources Inventory (NRI). The NRI is a statistically-based sample of land use and natural resource conditions and trends that covers non-federal land in the United States.

The NRCS is also providing technical assistance to the GSWCC and the EPD with the Georgia River Basin Planning Program. Planning activities associated with this program will describe conditions of the agricultural natural resource base once every five years. It is recommended that the GSWCC and the NRCS continue to encourage BMP implementation, education efforts, and river basin surveys with regard to river basin planning.

6.2.2.2 Urban Sources

Both point and nonpoint sources of fecal coliform bacteria can be significant in the Suwannee River Basin urban areas. Urban sources of fecal coliform can best be addressed using a strategy that involves public participation and intergovernmental coordination to reduce the discharge of pollutants to the maximum extent practicable. Management practices, control techniques, public education, and other appropriate methods and provisions may be employed. In addition to water quality monitoring programs, discussed in Section 6.1, the following activities and programs conducted by cities, counties, and state agencies are recommended:

- Uphold requirements that all new and replacement sanitary sewage systems be designed to minimize discharges into storm sewer systems;
- Further develop and streamline mechanisms for reporting and correcting illicit connections, breaks, surcharges, and general sanitary sewer system problems;
- Maintain compliance with stormwater NPDES permit requirements; and
- Continue efforts to increase public awareness and education towards the impact of human activities in urban settings on water quality, ranging from the consequences of industrial and municipal discharges to the activities of individuals in residential neighborhoods.

6.3 Reasonable Assurance

Permitted discharges will be regulated through the NPDES permitting process described in this report. An allocation to a point source discharger does not automatically result in a permit limit or a monitoring requirement. Through its NPDES permitting process, EPD will determine whether a new or existing discharger has a reasonable potential of discharging fecal coliform levels equal to or greater than the total allocated load. The results of this reasonable potential analysis will determine the specific type of requirements in an individual facility's NPDES permit. As part of its analysis, EPD will use its USEPA approved 2003 NPDES Reasonable Potential Procedures to determine whether monitoring requirements or effluent limitations are necessary.

Georgia is working with local governments, agricultural and forestry agencies, such as the Natural Resources Conservation Service, the Georgia Soil and Water Conservation

Commission, and the Georgia Forestry Commission, to foster the implementation of best management practices to address nonpoint sources. In addition, public education efforts will be targeted to individual stakeholders to provide information regarding the use of best management practices to protect water quality.

6.4 Public Participation

A thirty-day public notice is being provided for this TMDL. During this time, the availability of the TMDL will be public noticed, a copy of the TMDL will be provided on request, and the public is invited to provide comments on the TMDL.

7.0 INITIAL TMDL IMPLEMENTATION PLAN

7.1 Initial TMDL Implementation Plan

This plan identifies applicable State-wide programs and activities that may be employed to manage point and nonpoint sources of bacteria loads for three segments in the Suwannee River Basin. Local watershed planning and management initiatives will be fostered, supported, or developed through a variety of mechanisms. Implementation may be addressed by Watershed-Based Plans or other assessments funded by Section 319(h) grants, the local development of watershed protection plans, or “Targeted Outreach” initiated by EPD. These initiatives will supplement or possibly replace this initial implementation plan.

7.2 Impaired Segments

This initial plan is applicable to the following waterbodies that were added to Georgia’s 303(d) list available on the EPD website (epd.georgia.gov):

Waterbodies Listed on the 2014 303(d) List for Fecal Coliform Bacteria in the Suwannee River Basin

Stream Segment	Location	Reach ID	Segment Length (miles)	Designated Use
Jumping Gully Creek	Bevel Creek to State Line	R031102030903	1	Fishing
Tributary to Withlacoochee River #2	Headwaters to Withlacoochee River	R031102030804	5	Fishing
Willacoochee River	Turkey Branch, upstream SR90/US Hwy 319 N of Ocilla to SR 90, SE of Ocilla	R031102020607	13	Fishing
Withlacoochee River	Little River to Okapilco Creek	R031102030806	9	Fishing
Withlacoochee River	New River to Bay Branch	R031102030403	23	Fishing

Fecal coliform bacteria are used as an indicator of the potential presence of pathogens in a stream. The current water quality standard [*State of Georgia’s Rules and Regulations for Water Quality Control*, Chapter 391-3-6-.03(6)(c)(iii) (GA EPD, 2013)] states that four or more water samples collected within a 30-day period that have a geometric mean for fecal coliform either in excess of 200 Colony Forming Units (CFU) per 100 milliliters from May through October, or in excess of 1000 (CFU) per 100 milliliters from November through April are in violation of the bacteria water quality standard. In addition, a single sample in excess of 4000 (CFU) per 100 milliliters from November through April can also provide a basis for adding a stream segment to the 303(d) listing.

7.3 Potential Sources

An important part of the TMDL analysis is the identification of potential source categories. A source assessment characterizes the known and suspected bacteria sources in the watershed.

Sources are broadly classified as either point or nonpoint sources. A point source is defined as a discernable, confined, and discrete conveyance from which pollutants are or may be

discharged to surface waters. Point sources of bacteria include NPDES permittees discharging treated wastewater and stormwater. Nonpoint sources of bacteria are diffuse sources that cannot be identified as entering the waterbody at a single location. These sources generally involve land use activities that contribute bacteria to streams during a rainfall runoff event.

NPDES point source fecal coliform loads from wastewater treatment facilities usually do not contribute to impairments. This is because these facilities are required to treat to levels corresponding to instream water quality criteria. However, point sources can and do fail, which may contribute to bacteria loads through leaks and overflows from sanitary sewer systems, CAFOs, or leachate from operational landfills.

Nonpoint sources of fecal coliform in urban areas include wastes that are attributable to domestic animals, illicit discharges of sanitary waste, leaking septic systems, runoff from improper disposal of waste materials, and leachate from closed landfills. In non-urban areas, potential sources of fecal coliform may include animals grazing in pastures, dry manure storage facilities and lagoons, chicken litter storage areas, and direct access of livestock to streams. Wildlife, especially waterfowl, can be a significant source of fecal coliform bacteria.

7.4 Management Practices and Activities

EPD is responsible for administering and enforcing laws to protect the waters of the State and is the lead agency for implementing the State's Nonpoint Source Management Program. Georgia is working with local governments, agricultural and forestry agencies such as the Georgia Department of Agriculture, the Natural Resource Conservation Service (NRCS), the Georgia Soil and Water Conservation Commission (GSWCC), and the Georgia Forestry Commission (GFC) to foster implementation of BMPs that address nonpoint source pollution. The following management practices are recommended to reduce fecal coliform loads to stream segments:

- Sustained compliance with NPDES permit limits and requirements where applicable;
- Adoption of NRCS Conservation Practices for primarily agricultural lands;
- Application of BMPs appropriate to specific non-urban and urban land uses;
- Further development and streamlining of local jurisdictional mechanisms for identifying, reporting, and correcting illicit connections, breaks, and other sanitary sewer system problems;
- Adoption of local ordinances (i.e. septic tanks, stormwater, etc.) that address local water quality; and
- Ongoing public education efforts on the sources of fecal coliform and common sense approaches to lessen the impact of this contaminant on surface waters.

Public education efforts target individual stakeholders to provide information regarding the use of BMPs to protect water quality. EPD will continue efforts to increase awareness and educate the public about the impact of human activities on water quality.

7.5 Monitoring

EPD encourages local governments and municipalities to develop water quality monitoring programs. These programs can help pinpoint various fecal coliform sources, as well as verify the 303(d) stream segment listings. This will be particularly valuable for those segments where listing was based on limited data. In addition, regularly scheduled sampling will determine if there has been some improvement in the water quality of the listed stream segments. EPD is available to assist in providing technical guidance regarding the preparation of monitoring plans and Sampling Quality Assurance Plans (SQAP).

7.6 Future Action

This Initial TMDL Implementation Plan includes a general approach to pollutant source identification as well as management practices to address pollutants. In the future, EPD will continue to determine and assess the appropriate point and non-point source management measures needed to achieve the TMDLs and also to protect and restore water quality in impaired waterbodies.

For point sources, any wasteload allocations for wastewater treatment plant facilities will be implemented in the form of water quality-based effluent limitations in NPDES permits. Any wasteload allocations for regulated stormwater will be implemented in the form of best management practices in the NPDES permits. Contributions of bacteria from regulated communities may also be managed using permit requirements such as watershed assessments, watershed protection plans, and long term monitoring. These measures will be directed through current point source management programs.

EPD will work to support watershed restoration, improvement and protection projects that address nonpoint source pollution. This is a process whereby EPD and/or Regional Commissions or other agencies or local governments, under a contract with EPD, will develop a watershed management plan intended to address water quality at the small watershed level (HUC 10 or smaller). These plans will be developed as resources and willing partners become available. The development of these plans may be funded via several grant sources, including, but not limited to: Clean Water Act Section 319(h), Section 604(b), and/or Section 106 grant funds. These plans are intended for implementation upon completion.

Any watershed management plan that specifically addresses a waterbody contained within this TMDL will supersede this Initial TMDL Implementation Plan for that waterbody, once EPD accepts and/or approves the plan. Watershed management plans intended to address this TMDL and other water quality concerns, prepared for EPD, and for which EPD and/or the EPD Contractor are responsible, will contain at a minimum the US EPA's 9 Elements of Watershed Planning:

- 1) An identification of the sources or groups of similar sources contributing to nonpoint source pollution to be controlled to implement load allocations or achieve water quality standards. Sources should be identified at the subcategory level with estimates of the extent to which they are present in the watershed (e.g., X numbers of cattle feedlots needing upgrading, Y acres of row crops needing improved bacteria control, or Z linear miles of eroded streambank needing remediation);
- 2) An estimate of the load reductions expected for the management measures;
- 3) A description of the NPS management measures that will need to be implemented to achieve the load reductions established in the TMDL or to achieve water quality standards;
- 4) An estimate of the sources of funding needed, and/or authorities that will be relied upon, to implement the plan;
- 5) An information/education component that will be used to enhance public understanding of and participation in implementing the plan;
- 6) A schedule for implementing the management measures that is reasonably expeditious;

- 7) A description of interim, measurable milestones (e.g., amount of load reductions, improvement in biological or habitat parameters) for determining whether management measures or other control actions are being implemented;
- 8) A set of criteria that can be used to determine whether substantial progress is being made towards attaining water quality standards and, if not, the criteria for determining whether the plan needs to be revised; and;
- 9) A monitoring component to evaluate the effectiveness of the implementation efforts, measured against the criteria established under item (8).

The public will be provided an opportunity to participate in the development of watershed management plans that are prepared for EPD, and for which EPD and/or the EPD Contractor are responsible, and will be able to comment on them before they are finalized.

EPD will offer technical and financial assistance, when and where available, in the preparation of watershed management plans that address the impaired waterbodies listed in this TMDL document. Assistance may include but will not be limited to:

- Assessments of pollutant sources within watersheds;
- Determinations of appropriate management practices to address impairments;
- Identification of potential stakeholders and other partners;
- Developing a plan for outreach to the general public and other groups;
- Assessing the resources needed to implement the plan upon completion; and
- Other needs determined by the lead organization responsible for plan development.

EPD will also make this same assistance available, if needed, to proactively address water quality concerns. This assistance may be in the way of financial, technical, or other aid and may be requested and provided outside of the TMDL process or schedule.

REFERENCES

Carter, R.F., 1982. Storage Requirements for Georgia Streams, USGS, Water Resources Investigations, Open File Report 82-557.

Federal Register, 1990. Federal Register, Part II: Environmental Protection Agency, Vol. 55, No. 222, November 16, 1990.

GA Dept. of Agriculture, 2014. Personal Communications with State of Georgia, Department of Agriculture, Livestock and Poultry Field Forces. October 2014.

GA Dept. of Public Health, 2014. Personal Communications with State of Georgia, Department of Public Health, Environmental Health Section. August 2014.

GA EPD, 2012 – 2013. *Water Quality in Georgia, 2012 – 2013*, Georgia Department of Natural Resources, Environmental Protection Division.

GA EPD, 2002. *Suwannee River Basin Management Plan 2002*, State of Georgia, Department of Natural Resources, Environmental Protection Division, Water Protection Branch.

GA EPD, 2000. Combined Databases Of Landfills In Georgia; Historic And Current Through 1999, State of Georgia, Department of Natural Resources, Environmental Protection Division, Land Protection Branch.

GA EPD, 2014. Personal Communications with State of Georgia, Department of Natural Resources, Environmental Protection Division, Land Protection Branch. April 2014.

GA EPD, 2013. State of Georgia Rules and Regulations for Water Quality Control, Chapter 391-3-6, Revised October 2013, State of Georgia, Department of Natural Resources, Environmental Protection Division, Water Protection Branch.

GA WRD, 2007. Personal Communications with Region IV Office, Wildlife Resources Division, Georgia Department of Natural Resources, Thomson, GA, May 2007.

UGA, 2014. Personal Communications with Center for Agribusiness and Economic Development, College of Agriculture and Environmental Sciences, University of Georgia, 304A Lumpkin House, Athens, Georgia 30605, August - October 2014.

USEPA, 1991. *Guidance for Water Quality-Based Decisions: The TMDL Process*, EPA 440/4-91-001, U.S. Environmental Protection Agency, Assessment and Watershed Protection Division, Washington, D.C.

Appendix A

30-day Geometric Mean Fecal Coliform Monitoring Data

Water Quality Monitoring Stations

Stream Segment	Location	EPD Monitoring Station No.	Monitoring Station Description
Jumping Gully Creek	Bevel Creek to State Line	0903090102	Jumping Gully Creek - Jumping Gully Road SW of Lake Park, GA
Tributary to Withlacoochee River #2	Headwaters to Withlacoochee River	0903080304	Tributary to Withlacoochee River at Clyattville Nankin Road
Willacoochee River	Turkey Branch, upstream SR90/US Hwy 319 N of Ocilla to SR 90, SE of Ocilla	0902050303	Willacoochee River at Frank Church Road, near Ocilla, GA
Withlacoochee River	Little River to Okapilco Creek	0903080101	Withlacoochee River at US Highway 84
Withlacoochee River	New River to Bay Branch	0903040101	Withlacoochee River at CR 31 (Futch's Ferry Rd) near Adel, GA

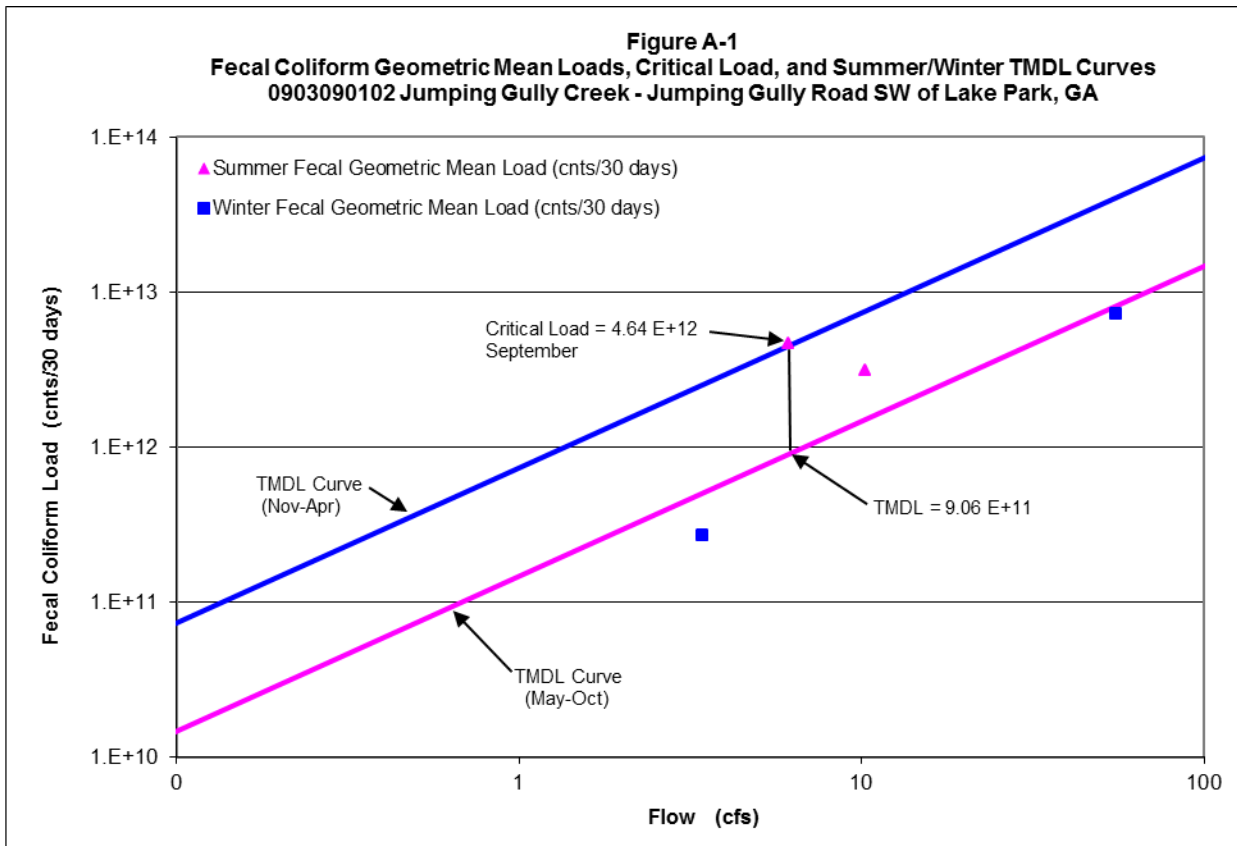


Table A-1. Data for Figure A-1

Date	Observed Fecal Coliform (counts/100 mL)	Estimated Instantaneous Flow On Sample Day (cfs)	Geometric Mean (counts/100 mL)	Mean Flow (cfs)	Geometric Mean Fecal Coliform Loading (counts/30 days)	Geometric Mean TMDL Fecal Coliform Loading (counts/30 days)
3/5/2013	80	102.6				
3/7/2013	110	60.2				
3/12/2013	230	31.0				
3/19/2013	500	28.5	178.4	55.6	7.27E+12	4.08E+13
6/10/2013	80	21.1				
6/18/2013	700	11.6				
6/19/2013	1700	7.0				
6/24/2013	300	1.5	411.1	10.3	3.11E+12	1.51E+12
9/5/2013	840	20.2				
9/16/2013	700	1.8				
9/19/2013	1100	0.9				
9/23/2013	1700	1.8	1024.0	6.2	4.64E+12	9.06E+11
12/2/2013	40	6.4				
12/5/2013	170	3.3				
12/10/2013	230	1.4				
12/12/2013	80	2.7	105.8	3.4	2.67E+11	2.53E+12

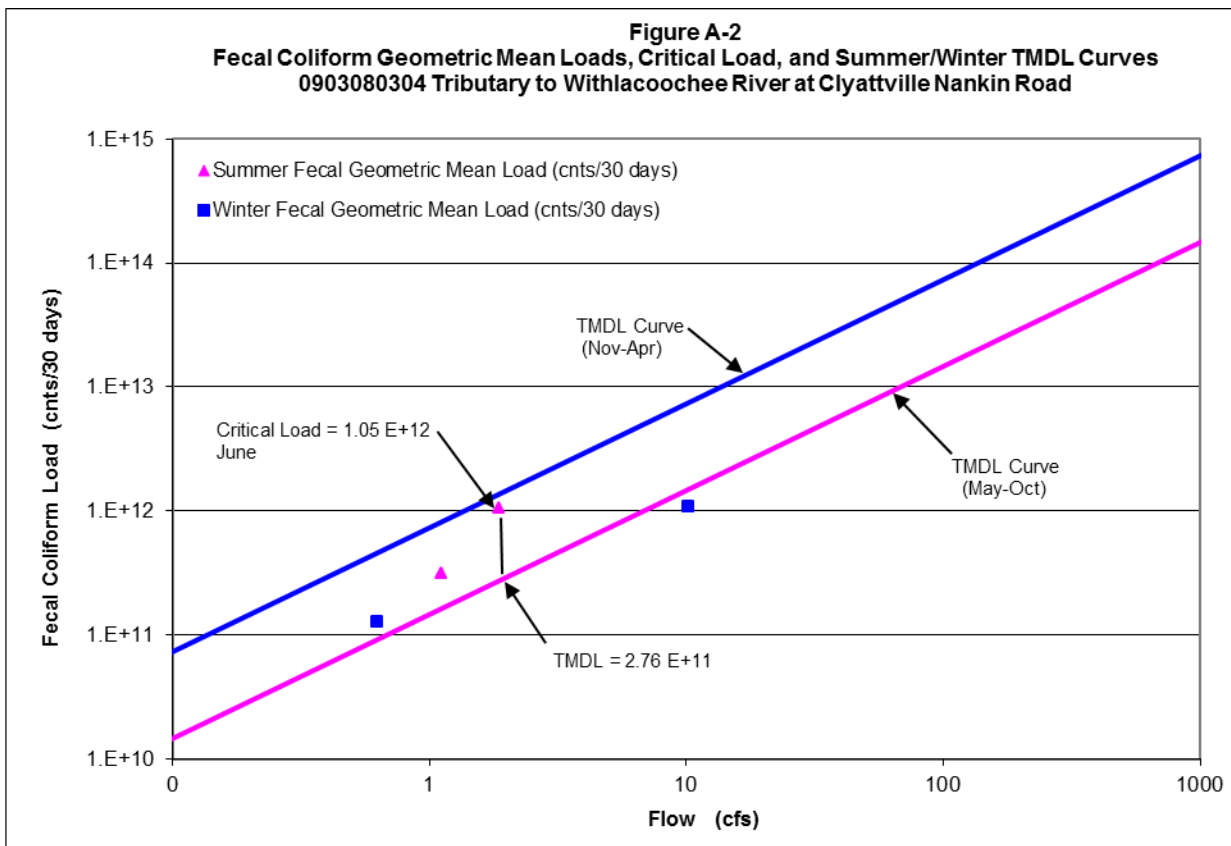


Table A-2. Data for Figure A-2

Date	Observed Fecal Coliform (counts/100 mL)	Estimated Instantaneous Flow On Sample Day (cfs)	Geometric Mean (counts/100 mL)	Mean Flow (cfs)	Geometric Mean Fecal Coliform Loading (counts/30 days)	Geometric Mean TMDL Fecal Coliform Loading (counts/30 days)
3/5/2013	40	18.7				
3/7/2013	40	11.0				
3/12/2013	130	5.7				
3/19/2013	2200	5.2	146.3	10.1	1.09E+12	7.45E+12
6/10/2013	500	3.9				
6/18/2013	1700	2.1				
6/19/2013	500	1.3				
6/24/2013	800	0.3	763.6	1.9	1.05E+12	2.76E+11
9/5/2013	800	3.7				
9/16/2013	40	0.3				
9/19/2013	300	0.2				
9/23/2013	2200	0.3	381.2	1.1	3.15E+11	1.65E+11
12/2/2013	170	1.2				
12/5/2013	160	0.6				
12/10/2013	1700	0.2				
12/12/2013	130	0.5	278.4	0.6	1.29E+11	4.62E+11

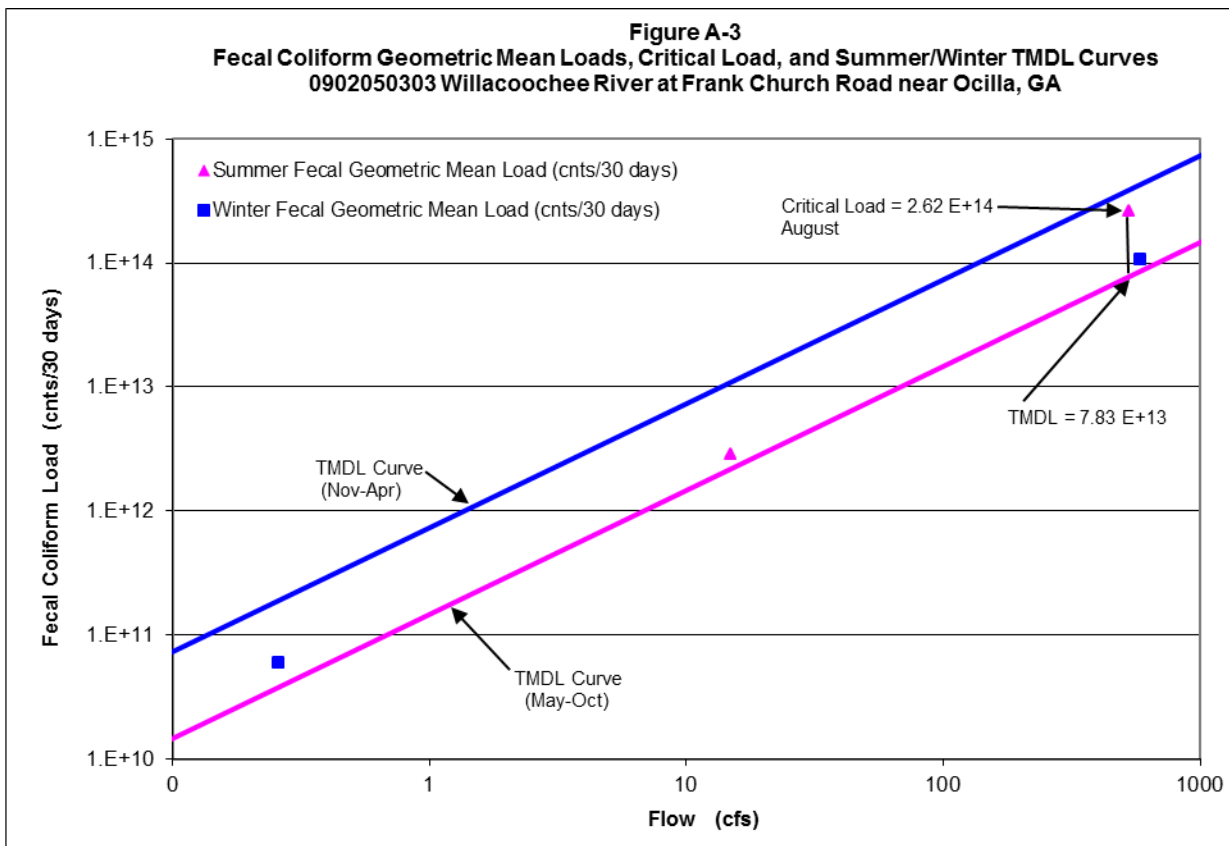


Table A-3. Data for Figure A-3

Date	Observed Fecal Coliform (counts/100 mL)	Estimated Instantaneous Flow On Sample Day (cfs)	Geometric Mean (counts/100 mL)	Mean Flow (cfs)	Geometric Mean Fecal Coliform Loading (counts/30 days)	Geometric Mean TMDL Fecal Coliform Loading (counts/30 days)
2/13/2013	9000	168.7				
2/19/2013	130	167.6				
2/21/2013	40	109.3				
2/28/2013	80	1907.3	247.4	588.2	1.07×10^{14}	4.32×10^{14}
5/6/2013	1300	24.1				
5/16/2013	170	7.3				
5/20/2013	70	2.5				
5/28/2013	300	26.2	261.0	15.0	2.88×10^{12}	2.21×10^{12}
8/1/2013	230	138.3				
8/20/2013	5000	731.6				
8/21/2013	2500	1103.6				
8/29/2013	70	160.5	669.8	533.5	2.62×10^{14}	7.83×10^{13}
11/5/2013	80	0.3				
11/7/2013	300	0.3				
11/12/2013	140	0.2				
11/18/2013	3000	0.3	316.9	0.3	5.99×10^{10}	1.89×10^{11}

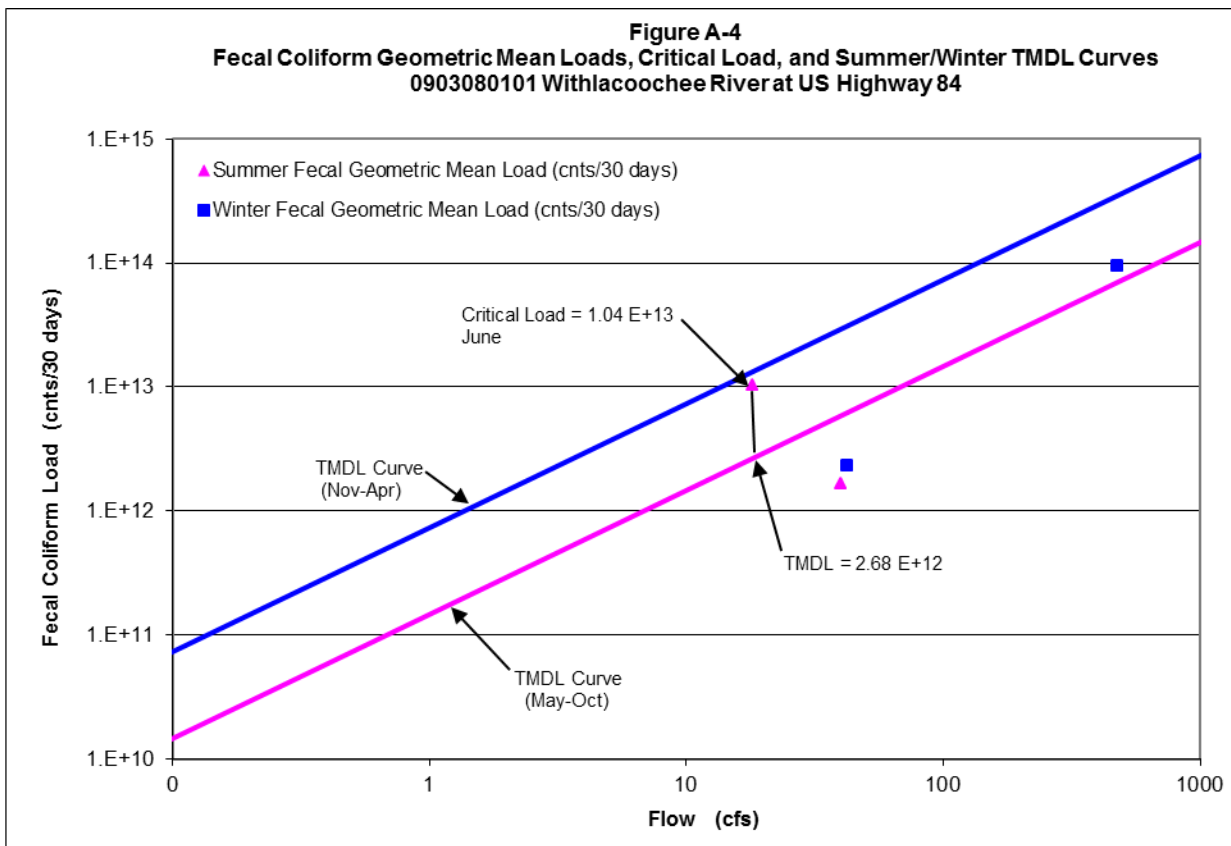


Table A-4. Data for Figure A-4

Date	Observed Fecal Coliform (counts/100 mL)	Estimated Instantaneous Flow On Sample Day (cfs)	Geometric Mean (counts/100 mL)	Mean Flow (cfs)	Geometric Mean Fecal Coliform Loading (counts/30 days)	Geometric Mean TMDL Fecal Coliform Loading (counts/30 days)
3/9/2011	80	233.2				
3/21/2011	170	246.9				
3/28/2011	1300	740.9				
3/30/2011	300	691.5	269.9	478.1	9.47×10^{13}	3.51×10^{14}
6/1/2011	30	18.5				
6/13/2011	5000	14.0				
6/15/2011	3000	14.5				
6/23/2011	800	26.0	774.6	18.3	1.04×10^{13}	2.68×10^{12}
9/1/2011	80	18.9				
9/6/2011	300	102.8				
9/13/2011	20	19.5				
9/19/2011	20	20.1	55.7	40.3	1.65×10^{12}	5.92×10^{12}
11/30/2011	20	44.7				
12/6/2011	20	34.2				
12/14/2011	315	55.5				
12/20/2011	235	34.8	73.8	42.3	2.29×10^{12}	3.10×10^{13}

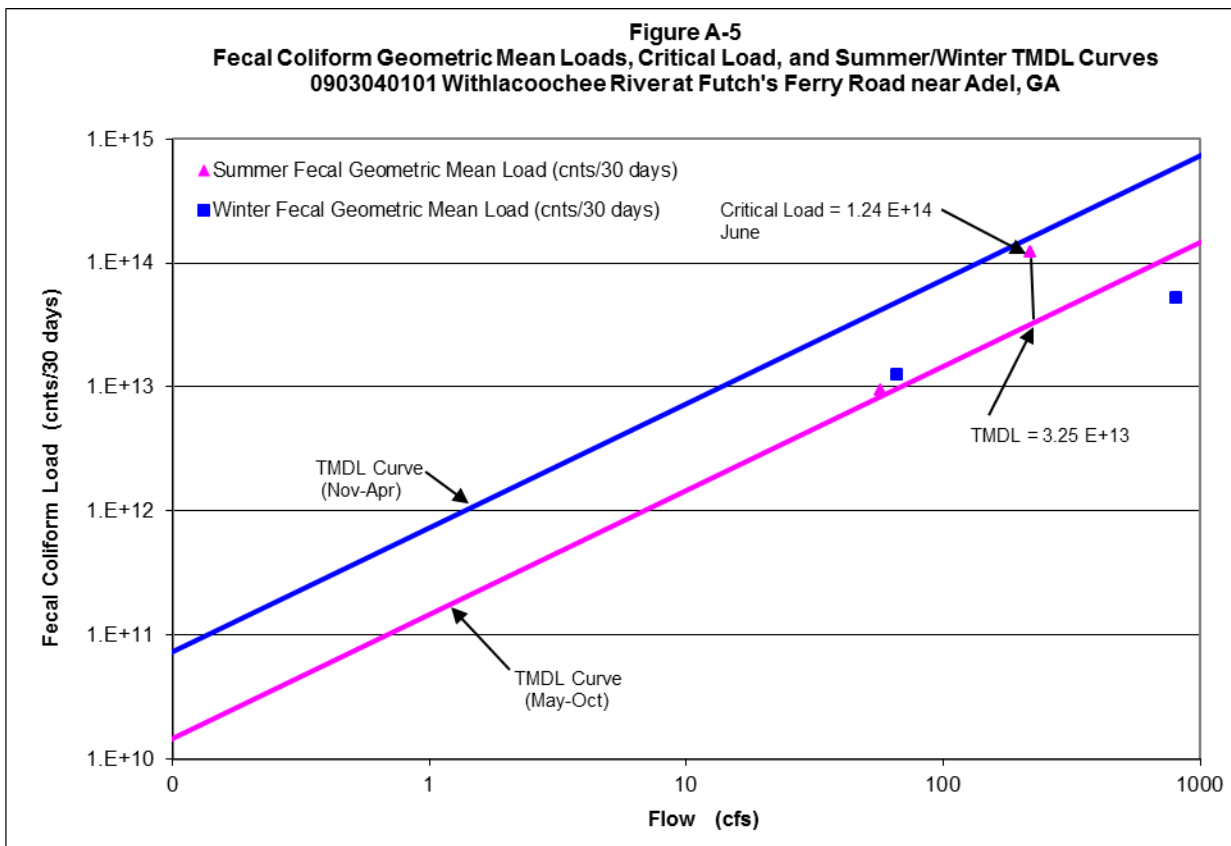


Table A-5. Data for Figure A-5

Date	Observed Fecal Coliform (counts/100 mL)	Estimated Instantaneous Flow On Sample Day (cfs)	Geometric Mean (counts/100 mL)	Mean Flow (cfs)	Geometric Mean Fecal Coliform Loading (counts/30 days)	Geometric Mean TMDL Fecal Coliform Loading (counts/30 days)
3/5/2013	40	1574.5				
3/7/2013	40	935.5				
3/12/2013	500	422.6				
3/19/2013	70	317.6	86.5	812.6	5.16×10^{13}	5.96×10^{14}
6/10/2013	1700	593.5				
6/18/2013	500	156.6				
6/19/2013	800	100.7				
6/24/2013	500	34.4	763.6	221.3	1.24×10^{14}	3.25×10^{13}
9/5/2013	220	165.5				
9/16/2013	220	20.8				
9/19/2013	230	13.3				
9/23/2013	230	30.7	224.9	57.6	9.51×10^{12}	8.45×10^{12}
12/2/2013	130	98.1				
12/5/2013	300	57.6				
12/10/2013	230	42.1				
12/12/2013	500	68.0	258.8	66.5	1.26×10^{13}	4.88×10^{13}

Appendix B

Normalized Flows Versus Fecal Coliform Plots

