

December 19, 2018

To: Director James Urisko <James.Urisko@dot.gov>, 404-832-1150
Southern Region Office
PHMSA Office of Pipeline Safety
233 Peachtree Street NE, Suite 600
Atlanta, GA 30303

Cc: Community Liaisons:
James A. Kelly <James.Kelly@dot.gov>, 404-990-1848
Arthur Buff <Arthur.Buff@dot.gov>, 404-226-6153



Re: **Sabal Trail Map and Hildreth Compressor Station Leak 2018-09-29**

Dear Director Urisko,

On November 13, 2018, I sent you a list of sixteen questions about Sabal Trail's leak at its Hildreth Compressor Station in Suwannee County, Florida, on September 29, 2018.

The only response I have received was by email the next day from James A. Kelly, saying:

"Thank you for contacting the Office of Pipeline Safety, Pipeline and Hazardous Materials Safety Administration. This initial response is to acknowledge your inquiry regarding the Sabal Trail Hildreth Compressor Station leak of September 29, 2018. We are reviewing the requested information internally and will follow-up as soon as possible."

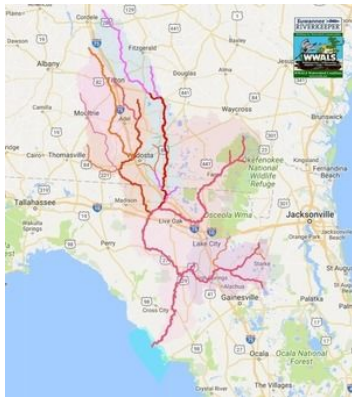
Let me add two more questions.

- 17. Why, a year and a half after Sabal Trail declared itself operational, are none of Sabal Trail nor the other components of the Southeast Market Pipelines Project (SMPP) shown in PHMSA's Public Map Viewer?
- 18. Why is the Sabal Trail Hildreth Compressor Station leak not shown in PHMSA's Public Map Viewer? <https://pvnpm.phmsa.dot.gov/PublicViewer/>

During the permitting for Sabal Trail and the other pipelines in the Southeast Market Pipelines Project, we were repeatedly assured by FERC and Sabal Trail that PHMSA handles pipeline safety.

Please let me know when I can expect answers to these questions.

Sincerely,
John S. Quarterman,
Suwannee Riverkeeper
WWALS Watershed Coalition
229-242-0102
contact@suwanneeriverkeeper.org



PO Box 88, Hahira, GA 31632
850-290-2350
wwalswatershed@gmail.com
www.wwals.net

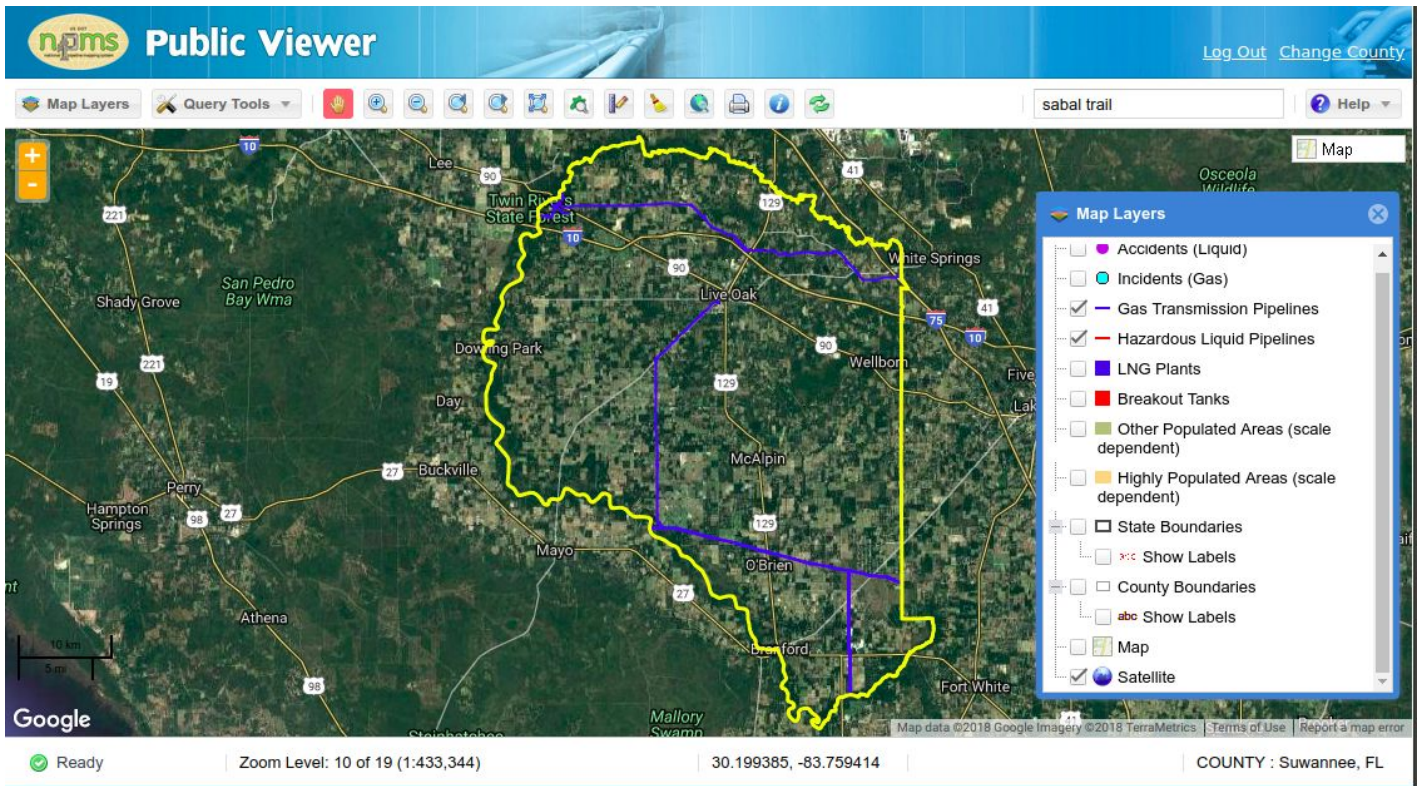
WWALS Watershed Coalition advocates for conservation and stewardship of the Withlacoochee, Willacochee, Alapaha, Little, and Suwannee River watersheds in south Georgia and north Florida through education, awareness, environmental monitoring, and citizen activities.



Attachments:

Screenshot of PHMSA Public Map Viewer for Suwannee County, Florida
Sabal Trail Alignment Map showing Hildreth Compressor Station location

Screenshot taken 2018-12-17 of PHMSA Public Map Viewer for Suwannee County, Florida, which does not include Sabal Trail:



Sabal Trail's 2018-04-07 Alignment Map 1657-PL-DG-70197-302, STA. 15798+00 TO STA. 15851+00, including its Hildreth COMPRESSOR STATION, at about Mile Point 300, near CR 49 and 210th Place, SUWANNEE COUNTY, FLORIDA, at about [30.0643120, -82.8786160](https://www.google.com/maps/place/30.0643120,-82.8786160).

